

**Commonwealth of Massachusetts
Board of Library Commissioners**

98 North Washington Street • Boston, Massachusetts 02114
617 725-1860 • 800 952-7403 (in-state only) • FAX 617 725-0140

MASSACHUSETTS SCHOOL LIBRARY MEDIA CENTER REPORT

Fall 2007

**Compiled: April 2008
Distributed: May 2008**

Dr. Em Claire Knowles, Chairman
George T. Comeau, Esq., Vice Chairman
Katherine K. Dibble, Secretary

Carol B. Caro
Richard D. Dunbar
Vicki L. Kaufman
Francis R. Murphy
Mary Rose Quinn
Irving H. Zangwill

Massachusetts Board of Library Commissioners

Prepared with LSTA funds

Preparation of this report was supported in part by the U.S. Institute of Museum and Library Services. However, the opinions expressed herein do not necessarily reflect the position or policy of that agency, and no official endorsement by that agency should be inferred.

Introduction

The *Massachusetts School Library Media Center Report, Fall 2007* reports data submitted by 531 (42%) of the 1266 school library media centers that are current or former members of one of the six Massachusetts regional library systems. The survey was distributed in November 2007.

MCAS test results can be viewed or downloaded from the Department of Education website at:
<http://www.doe.mass.edu/mcas/results.html>

This report provides information that may be used to evaluate school library media center services, support long-range and budget planning, strengthen service evaluation, and promote informed decision making. It reflects considerable time and effort expended by school library media center staff who carefully responded to the agency's written and telephone surveys. Their work is greatly appreciated.

Dianne Carty, Head, State Aid & Data Coordination
Ann Downey, Systems Analyst
James Lonergan, State Aid Specialist
Uechi Ng, Administrative Assistant

Robert C. Maier, Director
Massachusetts Board of Library Commissioners
98 North Washington Street, Boston, MA 02114
1-800-952-7403 or 617-725-1860 fax 617-725-0140

Massachusetts School Library Media Center Report, Fall 2007
Compiled: April 2008
Distributed: May 2008

Massachusetts School Library Media Center Report Fall 2007

Table of Contents

Fall 2007 School Summary	1
Media Center Holdings and Materials Expenditures	3
Media Center Staffing	30
Index of Reporting Schools	45
Appendix- Definitions for Data	57

2007 School Library Media Center Report - Summary

The 531 schools who returned our survey:

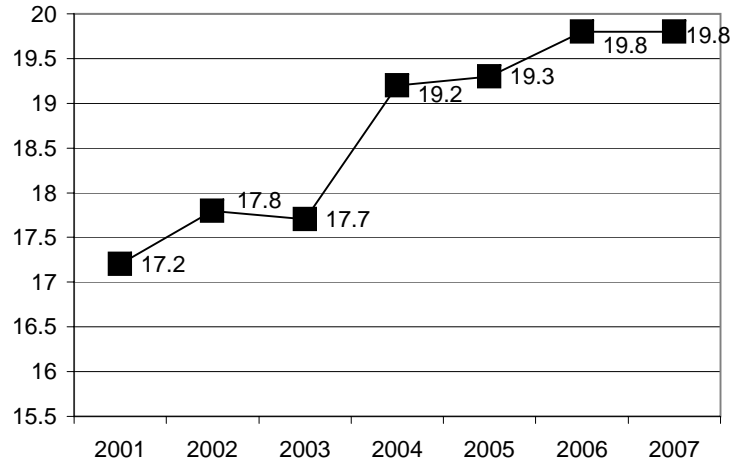
- ✎ Served 374,188 students and held 19.8 books per student.
- ✎ Employed 1,059 paid staff members, or 846.5 Full Time Equivalencies (FTE's) working 29,629 hours per week.
- ✎ 569 of the paid staff members were Certified Library Media Specialists
- ✎ Were open an average of 35.7 hours per week
- ✎ Have 10,525 computers in their library media centers, an average of 19.8 per library
- ✎ Of those computers, 10,391 accessed the internet, an average of 19.8 per library.
- ✎ Averaged \$13.95 per student on library materials
- ✎ \$4,059,598 was spent on library materials by the 400 libraries who reported expenditures.

Size of School (Number of Students)	Number of Schools	Average Number of Staff	Average Number of FTE's	Average Hours Open per Week	Average Number of Internet Computers	Average Library Materials Expenditures	Number Reporting Expenditures
0 - 249	33	1.6	0.9	29.7	9.1	\$4,442	25
250 - 499	184	1.7	1.2	33.2	11.4	\$6,420	126
500 - 749	135	1.8	1.6	36.7	20.6	\$9,356	102
750 - 999	71	2.3	1.7	37.4	24.1	\$11,020	57
1000 - 1499	73	2.4	2.1	39.2	27.8	\$16,032	64
1500 +	35	3.2	3.0	40.2	42.2	\$20,429	26

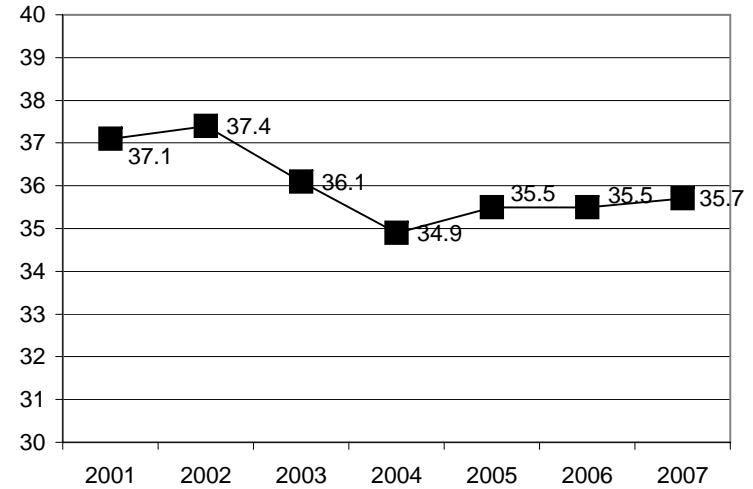
2007 School Library Media Center Report - Summary

Data Charts 2001 - 2007

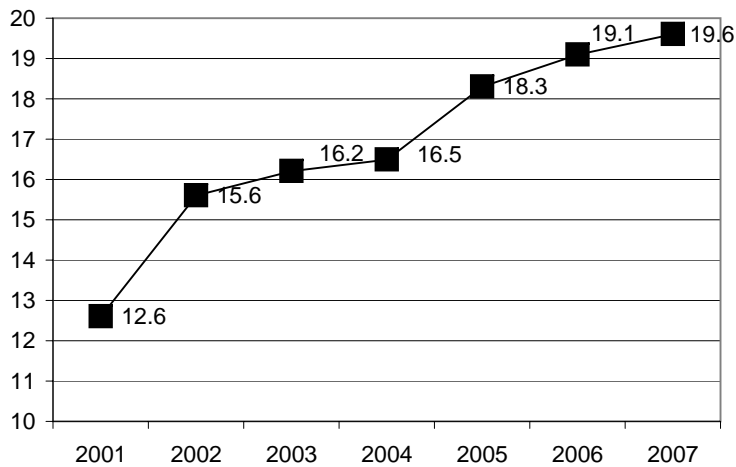
**Media Center Average Books Per Student
2001 - 2007**



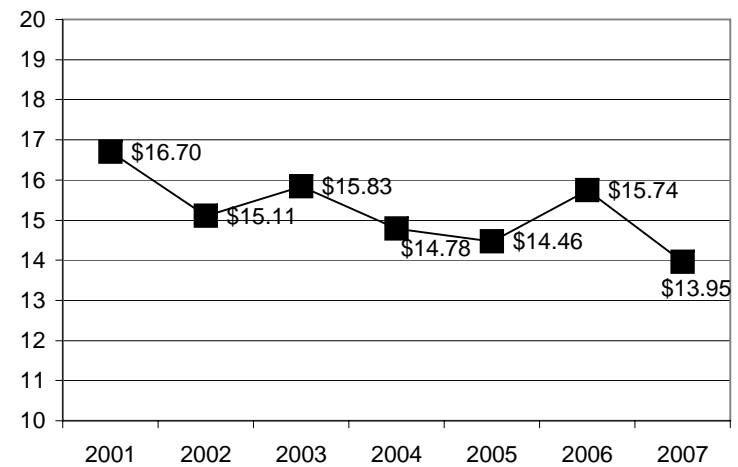
**Media Center Weekly Average Hours Open
2001 - 2007**



**Media Center Average Number of PC's
Accessing the Internet 2001 - 2007**



**Media Center Average Materials
Expenditure Per Student 2001 - 2007**



2007 School Library Media Report - Media Center Holdings and Total Expenditures

School/Municipality	Number of Students	Print Holdings	Print Holdings/Student	Non Print Holdings	Nonprint Holdings/Student	Subscriptions		Average Weekly Circ	Avg Wk Circ per Student	PC's w/ Internet	Int. PC's per 100 Students	Material Expenditures	Mat'l Exp. per Student
						Print	Electronic						
Abington - Abington High School	650	11,500	17.7	600	0.92	35	0	200	0.30	29	4.4615		N/A
Acton - Acton-Boxboro Reg. High School	2,117	19,883	9.4	189	0.09	33	6	0	0.00	62	2.9287	24,405	11.53
R.J. Grey Jr. High School	965	11,772	12.2	319	0.33	12	0	180	0.18	10	1.0363		N/A
Agawam - Agawam Junior High School	697	14,938	21.4	628	0.90	31	0	395	0.56	40	5.7389	8,000	11.48
Benjamin J. Phelps Public Elementary School	400	10,357	25.9	82	0.21	12	0	800	2.00	25	6.2500	3,700	9.25
Clifford M. Granger School	400	12,138	30.3	279	0.70	11	0	900	2.25	25	6.2500	3,700	9.25
James Clark Elementary School	400	12,163	30.4	160	0.40	13	0	900	2.25	25	6.2500	3,700	9.25
Robinson Park Elementary School	400	11,980	30.0	252	0.63	13	0	1,000	2.50	25	6.2500	3,700	9.25
Amesbury - Amesbury High School	719	10,426	14.5	498	0.69	39	1	50	0.06	13	1.8081	5,139	7.15
Amesbury Middle School	1,000	10,000	10.0	230	0.23	0	0	500	0.50	10	1.0000	4,000	4.00
Amherst - Amherst Regional High School	1,232	27,234	22.1	3,574	2.90	10	9	400	0.32	27	2.1916	27,000	21.92
Mark's Meadow Elementary School	200	12,000	60.0	321	1.61	8	0	320	1.60	3	1.5000	1,850	9.25
Wildwood Elementary School	420	22,069	52.5	1,060	2.52	6	0	0	0.00	6	1.4286	6,102	14.53
Andover - Bancroft Elementary School	462	21,599	46.8	384	0.83	25	0	420	0.90	32	6.9264	2,300	4.98
Gr. Lawrence Reg. Voc. Tech.	1,231	18,493	15.0	868	0.71	123	5	50	0.04	14	1.1373	20,480	16.64
Phillips Academy	1,090	108,000	99.1	3,590	3.29	145	55	990	0.90	12	1.1009	100,000	91.74
Sanborn School	350	20,000	57.1	164	0.47	12	0	800	2.28	5	1.4286	1,500	4.29
Shawsheen Elementary School	250	3,564	14.3	90	0.36	2	0	380	1.52	0	0.0000	400	1.60
Arlington - Arlington High School	1,137	20,200	17.8	1,722	1.51	32	9	120	0.10	24	2.1108	30,000	26.39
Ashburnham - John R. Briggs Elementary School	485	7,000	14.4	200	0.41	14	1	355	0.73	5	1.0309	5,030	10.37
Oakmont Regional High School	721	11,993	16.6	1,189	1.65	7	5	80	0.11	33	4.5770	2,900	4.02

2007 School Library Media Report - Media Center Holdings and Total Expenditures

School/Municipality	Number of Students	Print Holdings	Print Holdings/ Student	Non Print Holdings	Nonprint Holdings/ Student	Subscriptions		Average Weekly Circ	Avg Wk Circ per Student	PC's w/ Internet	Int. PC's per 100 Students	Material Expenditures	Mat'l Exp. per Student
						Print	Electronic						
Ashburnham - Overlook Middle School	599	8,833	14.7	496	0.83	24	7	100	0.16	16	2.6711		N/A
Ashby - Ashby Elementary School	293	14,767	50.4	562	1.92	19	3	600	2.04	8	2.7304	4,000	13.65
Ashfield - Sanderson Academy	136	7,323	53.8	155	1.14	0	0	120	0.88	0	0.0000		N/A
Athol - Athol High School	539	5,235	9.7	137	0.25	56	4	0	0.00	28	5.1948		N/A
Auburn - Auburn High School	690	6,200	9.0	100	0.14	48	4	15	0.02	4	0.5797	12,000	17.39
Avon - Avon Middle-High School	381	16,063	42.2	232	0.61	4	0	0	0.00	17	4.4619	3,000	7.87
Ayer - Ayer Middle/High School	742	17,991	24.2	1,105	1.49	20	2	100	0.13	25	3.3693	6,500	8.76
Barnstable - Barnstable High School	1,833	24,497	13.4	0	0.00	24	5	115	0.06	27	1.4730	27,000	14.73
Cotuit Elementary School	116	4,500	38.8	50	0.43	3	0	120	1.03	1	0.8621	2,000	17.24
Hyannis East Elementary School	272	6,875	25.3	168	0.62	3	0	200	0.74	1	0.3676	3,000	11.03
Hyannis West Elementary School	311	5,467	17.6	83	0.27	7	0	350	1.12	2	0.6431	2,500	8.04
Marstons Mills East Horace Mann Charter Public School	475	8,380	17.6	97	0.20	5	0	350	0.73	1	0.2105	4,000	8.42
Osterville Bay Elementary School	119	5,117	43.0	40	0.34	4	0	100	0.84	1	0.8403	2,000	16.81
Barre - Quabbin Regional Middle/High School	1,583	18,554	11.7	896	0.57	40	3	240	0.15	78	4.9274	25,000	15.79
Bedford - Bedford High School	750	14,898	19.9	1,254	1.67	0	1	0	0.00	30	4.0000		N/A
Hanscom Middle School	243	16,380	67.4	390	1.60	28	1	340	1.39	4	1.6461	10,035	41.30
Hanscom Primary School	267	16,000	59.9	320	1.20	20	1	480	1.79	4	1.4981	8,407	31.49
John Glenn Middle School	551	12,133	22.0	675	1.23	26	2	145	0.26	42	7.6225		N/A
Belchertown - Belchertown High School	807	13,000	16.1	2,418	3.00	55	11	60	0.07	44	5.4523	8,500	10.53
Bellingham - Bellingham High School	770	14,195	18.4	1,467	1.91	38	0	100	0.12	28	3.6364	10,000	12.99
Belmont - Belmont Day School	273	13,893	50.9	0	0.00	0	0	0	0.00	2	0.7326	0	N/A

2007 School Library Media Report - Media Center Holdings and Total Expenditures

School/Municipality	Number of Students	Print Holdings	Print Holdings/Student	Non Print Holdings	Nonprint Holdings/Student	Subscriptions		Average Weekly Circ	Avg Wk Circ per Student	PC's w/ Internet	Int. PC's per 100 Students	Material Expenditures	Mat'l Exp. per Student
						Print	Electronic						
Belmont - Chenery Middle School	1,126	23,627	21.0	1,491	1.32	0	0	700	0.62	24	2.1314		N/A
Mary Lee Burbank School	300	15,000	50.0	595	1.98	2	0	480	1.60	1	0.3333		N/A
Winn Brook School	450	16,000	35.6	510	1.13	8	0	610	1.35	24	5.3333		N/A
Beverly - Beverly High School	1,254	17,525	14.0	652	0.52	35	0	75	0.05	16	1.2759	6,000	4.78
Briscoe Middle School	984	12,000	12.2	260	0.26	20	0	200	0.20	46	4.6748		N/A
Landmark High School	315	8,822	28.0	331	1.05	47	1	45	0.14	18	5.7143		N/A
North Beverly Elementary School	307	10,100	32.9	96	0.31	13	0	0	0.00	29	9.4463	150	0.49
Billerica - Billerica Memorial High School	1,516	17,236	11.4	873	0.58	34	0	110	0.07	29	1.9129	24,099	15.90
Ditson Elementary School	767	13,380	17.4	620	0.81	7	0	700	0.91	15	1.9557	3,328	4.34
Marshall Middle School	863	7,177	8.3	283	0.33	15	3	0	0.00	31	3.5921	6,827	7.91
Vining Elementary School	335	5,500	16.4	85	0.25	8	0	300	0.89	26	7.7612	3,525	10.52
Bolton - Florence Sawyer School	850	14,000	16.5	600	0.71	28	1	400	0.47	12	1.4118		N/A
Nashoba Regional High School	950	12,000	12.6	525	0.55	30	4	75	0.07	65	6.8421	25,000	26.32
Boston - Boston Arts Academy/Fenway High School	721	12,814	17.8	2,205	3.06	33	9	130	0.18	29	4.0222	9,000	12.48
Boston Latin Academy	1,662	16,250	9.8	230	0.14	0	1	80	0.04	45	2.7076		N/A
Boston Latin School	2,495	34,000	13.6	705	0.28	65	15	200	0.08	92	3.6874	16,000	6.41
Elizabeth Seton Academy	101	2,500	24.8	75	0.74	5	0	50	0.49	7	6.9307	1,400	13.86
Jackson/Mann Elementary School	579	6,500	11.2	0	0.00	5	0	200	0.34	7	1.2090		N/A
Madison Park Technical Voc. High School	1,750	18,000	10.3	660	0.38	70	7	250	0.14	32	1.8286	17,000	9.71
The Roxbury Latin School	288	15,762	54.7	103	0.36	68	0	10	0.03	28	9.7222		N/A
Winsor School	432	24,276	56.2	280	0.65	0	65	400	0.92	31	7.1759	33,954	78.60

2007 School Library Media Report - Media Center Holdings and Total Expenditures

School/Municipality	Number of Students	Print Holdings	Print Holdings/Student	Non Print Holdings	Nonprint Holdings/Student	Subscriptions		Average Weekly Circ	Avg Wk Circ per Student	PC's w/ Internet	Int. PC's per 100 Students	Material Expenditures	Mat'l Exp. per Student
						Print	Electronic						
Bourne - Upper Cape Cod Regional Technical School	687	6,357	9.3	372	0.54	86	2	75	0.10	10	1.4556	12,500	18.20
Boxford - Spofford Pond School	550	15,000	27.3	0	0.00	8	0	1,200	2.18	8	1.4545		N/A
Boylston - Tahanto Regional Middle High School	488	11,500	23.6	0	0.00	0	7	31	0.06	27	5.5328	21,000	43.03
Braintree - Archbishop Williams High School	600	4,530	7.6	139	0.23	22	0	40	0.06	16	2.6667	2,000	3.33
Archie T. Morrison Elementary School	438	8,000	18.3	250	0.57	0	0	0	0.00	1	0.2283	1,100	2.51
Braintree High School	1,542	15,211	9.9	899	0.58	35	0	0	0.00	28	1.8158	5,300	3.44
East Middle School	729	9,000	12.3	30	0.04	18	0	20	0.02	10	1.3717		N/A
Highlands Elementary School	401	7,600	19.0	285	0.71	15	0	750	1.87	1	0.2494	4,000	9.98
Bridgewater - Bridgewater-Raynham Regional High School	1,500	7,400	4.9	478	0.32	32	0	131	0.08	40	2.6667	3,600	2.40
George H. Mitchell Elementary School	1,250	7,733	6.2	262	0.21	0	0	600	0.48	0	0.0000	0	N/A
Brockton - Angelo School IRC	721	10,331	14.3	0	0.00	5	0	325	0.45	4	0.5548	4,000	5.55
Brookline - Baker School	650	21,000	32.3	277	0.43	10	0	500	0.76	16	2.4615		N/A
Brookline High School	1,891	27,075	14.3	1,940	1.03	21	8	550	0.29	33	1.7451		N/A
Driscoll School	386	28,826	74.7	429	1.11	12	0	480	1.24	9	2.3316		N/A
Edward Devotion School	710	25,088	35.3	0	0.00	0	0	550	0.77	7	0.9859		N/A
Heath School	377	14,396	38.2	32	0.08	7	0	438	1.16	4	1.0610		N/A
Lawrence Elementary School	565	22,710	40.2	433	0.77	11	0	790	1.39	28	4.9558	6,400	11.33
Pierce School	587	45,072	76.8	530	0.90	12	1	800	1.36	9	1.5332	8,712	14.84
William H. Lincoln School	471	21,960	46.6	316	0.67	19	0	800	1.69	9	1.9108		N/A
Cambridge - Baldwin School	382	10,710	28.0	220	0.58	0	0	183	0.47	2	0.5236		N/A

2007 School Library Media Report - Media Center Holdings and Total Expenditures

School/Municipality	Number of Students	Print Holdings	Print Holdings/Student	Non Print Holdings	Nonprint Holdings/Student	Subscriptions		Average Weekly Circ	Avg Wk Circ per Student	PC's w/ Internet	Int. PC's per 100 Students	Material Expenditures	Mat'l Exp. per Student
						Print	Electronic						
Cambridge - Buckingham, Browne and Nichols Upper School	470	16,931	36.0	47	0.10	100	11	0	0.00	12	2.5532		N/A
Cambridge Rindge & Latin School	1,476	20,668	14.0	3,608	2.44	32	26	206	0.13	30	2.0325	23,113	15.66
Cambridgeport School	270	11,831	43.8	357	1.32	0	0	188	0.69	6	2.2222	3,267	12.10
Dr. Martin Luther King Jr. School and AMIGOS School	532	16,469	31.0	504	0.95	0	0	471	0.88	10	1.8797		N/A
The Fletcher Maynard Academy	239	15,100	63.2	532	2.23	0	0	247	1.03	10	4.1841		N/A
The Graham and Parks School	407	11,530	28.3	544	1.34	7	0	427	1.04	8	1.9656	6,956	17.09
Haggerty School	256	14,575	56.9	234	0.91	0	0	249	0.97	4	1.5625		N/A
John M. Tobin School	340	19,097	56.2	839	2.47	0	0	406	1.19	7	2.0588		N/A
Kennedy Longfellow School	391	12,721	32.5	675	1.73	0	0	297	0.75	8	2.0460		N/A
King Open School	520	12,926	24.9	419	0.81	13	0	350	0.67	7	1.3462		N/A
Matignon High School	299	5,300	17.7	280	0.94	20	0	60	0.20	33	11.0368		N/A
Morse Elementary School	345	13,150	38.1	720	2.09	13	0	312	0.90	4	1.1594	4,925	14.28
Shady Hill School	503	24,459	48.6	1,081	2.15	19	2	770	1.53	20	3.9761	29,000	57.65
Canton - Canton High School	816	13,500	16.5	10,044	12.31	24	4	200	0.24	29	3.5539	7,250	8.88
Carlisle - Carlisle School	780	25,250	32.4	300	0.38	15	0	1,000	1.28	14	1.7949	5,000	6.41
Charlton - Bay Path Regional Voc. Technical High School	1,190	7,080	5.9	1,900	1.60	116	2	10	0.00	53	4.4538	36,440	30.62
Charlton Middle School	837	7,197	8.6	601	0.72	14	0	400	0.47	28	3.3453		N/A
Chelmsford - Byam School	500	11,841	23.7	130	0.26	17	0	523	1.04	4	0.8000	4,000	8.00
Center School	450	10,212	22.7	196	0.44	16	0	511	1.13	4	0.8889	4,000	8.89
Chelmsford High School	1,725	28,851	16.7	1,850	1.07	44	14	100	0.05	42	2.4348	38,000	22.03

2007 School Library Media Report - Media Center Holdings and Total Expenditures

School/Municipality	Number of Students	Print Holdings	Print Holdings/Student	Non Print Holdings	Nonprint Holdings/Student	Subscriptions		Average Weekly Circ	Avg Wk Circ per Student	PC's w/ Internet	Int. PC's per 100 Students	Material Expenditures	Mat'l Exp. per Student
						Print	Electronic						
Chelmsford - Harrington School	545	11,854	21.8	154	0.28	14	0	649	1.19	4	0.7339	4,000	7.34
McCarthy Middle School	947	15,053	15.9	117	0.12	20	0	1,300	1.37	27	2.8511	10,000	10.56
Parker Middle School	743	13,316	17.9	100	0.13	13	0	400	0.53	26	3.4993	10,000	13.46
South Row School	378	11,691	30.9	93	0.25	16	0	648	1.71	4	1.0582	4,000	10.58
Westlands School	373	8,130	21.8	133	0.36	18	0	405	1.08	4	1.0724	4,000	10.72
Chelsea - Chelsea High School	1,520	26,739	17.6	1,200	0.79	45	1	200	0.13	33	2.1711	31,000	20.39
Williams Middle School	938	25,549	27.2	235	0.25	25	0	750	0.79	25	2.6652	14,000	14.93
Chicopee - Bellamy Middle School	970	12,268	12.6	78	0.08	0	1	350	0.36	14	1.4433	6,000	6.19
Chicopee High School	1,170	10,962	9.4	681	0.58	21	20	75	0.06	44	3.7607		N/A
Cohasset - Cohasset Middle/Senior High School	800	15,916	19.9	168	0.21	0	0	68	0.08	10	1.2500	5,000	6.25
Concord - Concord Academy	360	18,031	50.1	1,808	5.02	106	5	0	0.00	12	3.3333	20,000	55.56
Middlesex School	353	35,785	101.0	6,747	19.11	103	10	295	0.83	16	4.5326	37,734	106.90
Willard School	372	16,870	45.3	349	0.94	14	0	560	1.50	6	1.6129	5,071	13.63
Dalton - Nessacus Regional Middle School	586	18,320	31.3	834	1.42	27	0	360	0.61	13	2.2184	2,000	3.41
Danvers - Danvers High School	1,000	13,000	13.0	712	0.71	45	1	0	0.00	32	3.2000	29,450	29.45
Essex Agricultural and Technical High School	430	11,000	25.6	1,000	2.33	100	0	50	0.11	36	8.3721	10,000	23.26
St. Johns Preparatory School	1,278	20,586	16.1	91	0.07	80	13	85	0.06	47	3.6776	34,707	27.16
Dartmouth - Dartmouth High School	1,350	16,336	12.1	1,084	0.80	45	5	200	0.14	40	2.9630	22,000	16.30
Dartmouth Middle School	1,062	8,868	8.4	536	0.50	14	0	225	0.21	33	3.1073	12,475	11.75
Dedham - Dedham High School	785	15,162	19.3	179	0.23	22	0	52	0.06	62	7.8981	6,996	8.91
Dedham Middle School	674	7,467	11.1	300	0.45	2	0	200	0.29	32	4.7478	310	0.46

2007 School Library Media Report - Media Center Holdings and Total Expenditures

School/Municipality	Number of Students	Print Holdings	Print Holdings/Student	Non Print Holdings	Nonprint Holdings/Student	Subscriptions		Average Weekly Circ	Avg Wk Circ per Student	PC's w/ Internet	Int. PC's per 100 Students	Material Expenditures	Mat'l Exp. per Student
						Print	Electronic						
Dedham - Noble and Greenough School	547	35,000	64.0	2,475	4.52	124	21	225	0.41	33	6.0329	61,000	111.52
Riverdale School	231	11,100	48.1	150	0.65	0	0	400	1.73	18	7.7922	850	3.68
Deerfield - Bement School	250	6,000	24.0	140	0.56	16	0	250	1.00	36	14.4000		N/A
Deerfield Academy	600	56,567	94.3	9,967	16.61	165	62	349	0.58	30	5.0000	84,363	140.61
Eaglebrook School	284	18,938	66.7	107	0.38	61	5	0	0.00	8	2.8169	10,000	35.21
Frontier Regional School	740	13,829	18.7	1,400	1.89	35	3	90	0.12	32	4.3243	9,850	13.31
Douglas - Douglas Elementary School	380	6,163	16.2	182	0.48	7	1	928	2.44	29	7.6316	2,500	6.58
Douglas High School	590	8,085	13.7	519	0.88	15	0	50	0.08	26	4.4068	1,000	1.69
Dover - Dover-Sherborn High School	579	19,483	33.6	282	0.49	52	3	25	0.04	16	2.7634		N/A
Dracut - Dracut Senior High School	1,200	15,500	12.9	70	0.06	60	5	380	0.31	36	3.0000	25,000	20.83
Dudley - Dudley Middle School	583	4,919	8.4	147	0.25	10	0	62	0.10	29	4.9743		N/A
Shepherd Hill Regional High School	1,230	35,705	29.0	1,863	1.51	25	0	32	0.02	26	2.1138	630	0.51
Duxbury - Duxbury High School	974	15,911	16.3	1,874	1.92	12	4	10	0.01	12	1.2320	18,000	18.48
Duxbury Middle School	800	12,639	15.8	1,122	1.40	13	5	160	0.20	12	1.5000	7,606	9.51
East Bridgewater - Central School Library	850	9,077	10.7	559	0.66	11	0	767	0.90	1	0.1176	4,375	5.15
Gordon W. Mitchell Middle School	1,050	11,592	11.0	434	0.41	31	0	550	0.52	12	1.1429	4,375	4.17
East Longmeadow - Birchland Park Middle School	674	13,030	19.3	1,025	1.52	32	1	0	0.00	23	3.4125	2,778	4.12
Eastham - Nauset Regional High School	1,071	16,900	15.8	198	0.18	48	0	45	0.04	19	1.7740	11,000	10.27
Easton - Oliver Ames High School	804	9,861	12.3	581	0.72	28	4	0	0.00	30	3.7313	1,195	1.49
Southeastern Regional Vocational Technical High School	1,260	19,553	15.5	60	0.05	50	0	90	0.07	14	1.1111		N/A

2007 School Library Media Report - Media Center Holdings and Total Expenditures

School/Municipality	Number of Students	Print Holdings	Print Holdings/ Student	Non Print Holdings	Nonprint Holdings/ Student	Subscriptions		Average Weekly Circ	Avg Wk Circ per Student	PC's w/ Internet	Int. PC's per 100 Students	Material Expenditures	Mat'l Exp. per Student
						Print	Electronic						
Everett - Everett High School	1,769	12,500	7.1	550	0.31	10	0	40	0.02	32	1.8089		N/A
Lafayette School	834	16,500	19.8	350	0.42	0	0	0	0.00	0	0.0000	0	N/A
Pope John XXIII Central High School	378	3,848	10.2	258	0.68	32	0	25	0.06	16	4.2328		N/A
Fall River - B.M.C. Durfee High School	2,500	32,273	12.9	1,778	0.71	0	0	44	0.01	54	2.1600		N/A
Bishop Connolly High School	315	13,431	42.6	152	0.48	20	24	0	0.00	20	6.3492	3,185	10.11
Diman Regional Vocational Technical High School	1,335	13,039	9.8	850	0.64	72	2	125	0.09	17	1.2734	42,884	32.12
Falmouth - Falmouth Academy	226	6,320	28.0	183	0.81	12	0	90	0.39	5	2.2124		N/A
Falmouth High School	1,151	24,012	20.9	1,483	1.29	25	0	200	0.17	25	2.1720	5,808	5.05
North Falmouth Elementary School	397	10,350	26.1	423	1.07	3	1	1,100	2.77	30	7.5567	4,000	10.08
Teaticket Elementary School	363	8,112	22.3	100	0.28	16	5	0	0.00	5	1.3774	4,500	12.40
Framingham - Framingham High School	2,000	21,439	10.7	584	0.29	32	0	75	0.03	50	2.5000	18,000	9.00
Marian High School	275	1,000	3.6	100	0.36	20	0	100	0.36	9	3.2727		N/A
Potter Road School	475	15,000	31.6	300	0.63	5	0	500	1.05	1	0.2105		N/A
St. Bridget School	272	10,832	39.8	520	1.91	15	0	175	0.64	3	1.1029	3,650	13.42
Franklin - Davis Thayer Elementary School	307	8,068	26.3	130	0.42	0	0	397	1.29	2	0.6515	2,000	6.51
Franklin High School	1,533	27,265	17.8	2,448	1.60	28	0	50	0.03	44	2.8702	29,000	18.92
Gerald M.Parmenter School	429	10,634	24.8	78	0.18	18	0	390	0.90	2	0.4662	3,650	8.51
Jefferson Elementary School	550	25,000	45.5	825	1.50	43	0	1,000	1.81	14	2.5455	5,000	9.09
John F. Kennedy Memorial School	538	9,148	17.0	48	0.09	17	0	700	1.30	4	0.7435	5,000	9.29
Remington Middle School	550	25,000	45.5	825	1.50	43	0	1,000	1.81	14	2.5455	8,000	14.55
Tri-County Regional Vocational Technical School	901	11,200	12.4	258	0.29	39	1	0	0.00	30	3.3296	9,000	9.99

2007 School Library Media Report - Media Center Holdings and Total Expenditures

School/Municipality	Number of Students	Print Holdings	Print Holdings/Student	Non Print Holdings	Nonprint Holdings/Student	Subscriptions		Average Weekly Circ	Avg Wk Circ per Student	PC's w/ Internet	Int. PC's per 100 Students	Material Expenditures	Mat'l Exp. per Student
						Print	Electronic						
Georgetown - Georgetown Middle High School	813	14,416	17.7	1,261	1.55	44	0	52	0.06	39	4.7970	7,010	8.62
Gloucester - Gloucester High School	1,203	14,467	12.0	1,213	1.01	78	6	110	0.09	52	4.3225	17,500	14.55
Grafton - Grafton Memorial High School	681	11,690	17.2	350	0.51	35	3	30	0.04	22	3.2305	8,000	11.75
Grafton Middle School	651	7,752	11.9	11	0.02	10	0	50	0.07	8	1.2289	4,250	6.53
Granby - Granby Jr./Sr. High School	540	10,000	18.5	506	0.94	4	0	300	0.55	21	3.8889	4,500	8.33
Great Barrington - Monument Mt. Regional High School	647	9,627	14.9	115	0.18	70	8	27	0.04	16	2.4730	13,639	21.08
Monument Valley Regional Middle School	375	6,000	16.0	240	0.64	20	1	50	0.13	10	2.6667	9,000	24.00
Muddy Brook Regional Elementary School	402	6,000	14.9	140	0.35	10	1	600	1.49	6	1.4925	6,000	14.93
Greenfield - Greenfield High School	432	17,457	40.4	497	1.15	63	0	0	0.00	13	3.0093		N/A
Groton - Groton-Dunstable Regional High School	835	11,000	13.2	847	1.01	41	4	100	0.11	11	1.3174	28,000	33.53
Hadley - Hopkins Academy	274	12,328	45.0	379	1.38	22	2	32	0.11	20	7.2993	53,958	196.93
Halifax - Halifax Elementary School	720	10,000	13.9	0	0.00	2	0	475	0.65	25	3.4722		N/A
Hamilton - Hamilton-Wenham Regional High School	1,200	21,000	17.5	550	0.46	18	0	250	0.20	28	2.3333	10,000	8.33
Hanover - Cedar Elementary School	557	9,598	17.2	270	0.48	12	1	1,300	2.33	25	4.4883	6,200	11.13
Hanover High School	740	8,612	11.6	388	0.52	40	3	0	0.00	34	4.5946	7,000	9.46
Hanover Middle School	901	12,740	14.1	290	0.32	30	0	140	0.15	28	3.1077	9,000	9.99
South Shore Vocational Technical High School	581	9,856	17.0	0	0.00	75	140	125	0.21	26	4.4750	17,000	29.26
Hanson - Hanson Middle School	485	15,568	32.1	1,463	3.02	12	0	390	0.80	18	3.7113	4,900	10.10
Indian Head School	470	9,681	20.6	295	0.63	17	0	450	0.95	8	1.7021	2,500	5.32
Maquan School	507	7,592	15.0	156	0.31	7	0	600	1.18	1	0.1972	3,000	5.92

2007 School Library Media Report - Media Center Holdings and Total Expenditures

School/Municipality	Number of Students	Print Holdings	Print Holdings/Student	Non Print Holdings	Nonprint Holdings/Student	Subscriptions		Average Weekly Circ	Avg Wk Circ per Student	PC's w/ Internet	Int. PC's per 100 Students	Material Expenditures	Mat'l Exp. per Student
						Print	Electronic						
Hardwick - Eagle Hill School	150	8,007	53.4	275	1.83	11	1	25	0.16	10	6.6667	11,500	76.67
Hatfield - Smith Academy	200	10,401	52.0	43	0.22	27	0	31	0.15	16	8.0000	6,500	32.50
Haverhill - Haverhill High School	2,100	35,000	16.7	3,200	1.52	38	0	100	0.04	25	1.1905		N/A
Pentucket Lake Elementary School	525	27,658	52.7	492	0.94	0	0	550	1.04	0	0.0000	1,500	2.86
Whittier Middle School	375	9,667	25.8	250	0.67	10	0	250	0.66	4	1.0667	0	N/A
Whittier Reg. Voc. Tech. High School	1,078	12,300	11.4	140	0.13	54	5	100	0.09	43	3.9889	23,000	21.34
Heath - Heath Elementary School	82	5,046	61.5	23	0.28	0	0	72	0.87	4	4.8780	1,050	12.80
Hingham - Foster Elementary School	609	12,780	21.0	532	0.87	23	0	643	1.05	4	0.6568	5,700	9.36
Hingham High School	1,038	12,354	11.9	732	0.71	26	3	75	0.07	12	1.1561	13,263	12.78
Plymouth River School	683	20,000	29.3	599	0.88	0	0	600	0.87	13	1.9034	5,950	8.71
South Elementary School	650	12,500	19.2	300	0.46	16	0	600	0.92	3	0.4615	5,950	9.15
Holden - Wachusett Regional High School	1,939	21,168	10.9	2,812	1.45	75	4	600	0.30	25	1.2893	45,000	23.21
Holliston - Fred Miller Elementary School	612	15,801	25.8	406	0.66	19	0	500	0.81	12	1.9608	4,000	6.54
Holyoke - E.N. White Elementary	520	7,000	13.5	436	0.84	7	0	150	0.28	5	0.9615		N/A
Holyoke High School	1,300	24,520	18.9	979	0.75	19	2	200	0.15	10	0.7692	6,000	4.62
Peck Middle School	270	16,704	61.9	347	1.29	0	0	250	0.92	8	2.9630	1,000	3.70
Sullivan School	650	9,959	15.3	422	0.65	22	2	275	0.42	6	0.9231	5,000	7.69
William J. Dean Technical High School	765	20,669	27.0	1,147	1.50	41	0	115	0.15	18	2.3529		N/A
Hopkinton - Center Elementary School	481	10,906	22.7	567	1.18	7	0	0	0.00	1	0.2079		N/A
Hopkinton High School	962	16,397	17.0	2,123	2.21	48	10	82	0.08	38	3.9501	28,000	29.11
Hopkinton Middle School	830	14,438	17.4	672	0.81	34	6	120	0.14	18	2.1687	13,140	15.83

2007 School Library Media Report - Media Center Holdings and Total Expenditures

School/Municipality	Number of Students	Print Holdings	Print Holdings/Student	Non Print Holdings	Nonprint Holdings/Student	Subscriptions		Average Weekly Circ	Avg Wk Circ per Student	PC's w/ Internet	Int. PC's per 100 Students	Material Expenditures	Mat'l Exp. per Student
						Print	Electronic						
Hudson - C.A. Farley Elementary School	487	12,000	24.6	300	0.62	8	0	495	1.01	14	2.8747	2,000	4.11
Hudson High School	2,148	14,895	6.9	0	0.00	26	3	0	0.00	30	1.3966	24,100	11.22
JL Mulready Elementary School	224	8,000	35.7	150	0.67	5	1	224	1.00	4	1.7857	1,000	4.46
St. Michael Parish Schools	350	10,000	28.6	220	0.63	0	0	200	0.57	9	2.5714	1,000	2.86
Kingston - Sacred Heart High School	580	15,789	27.2	652	1.12	8	0	100	0.17	10	1.7241	16,500	28.45
Lakeville - Freetown-Lakeville Middle School	788	12,154	15.4	336	0.43	22	1	600	0.76	29	3.6802	2,400	3.05
Lancaster - Dr. Franklin Perkins School	150	9,503	63.4	935	6.23	32	0	280	1.86	3	2.0000		N/A
Lawrence - Gerard Guilmette School	1,035	17,146	16.6	479	0.46	0	0	350	0.33	24	2.3188		N/A
Lawrence High School	2,969	29,339	9.9	432	0.15	29	2	62	0.02	52	1.7514	5,379	1.81
Lee - Lee Elementary School	404	14,537	36.0	960	2.38	18	0	625	1.54	28	6.9307	7,000	17.33
Lee Middle/High School	502	9,297	18.5	322	0.64	25	3	52	0.10	20	3.9841	7,000	13.94
Leicester - Leicester High School	569	6,950	12.2	0	0.00	20	4	45	0.07	24	4.2179	9,500	16.70
Lenox - Lenox Memorial Middle/ High School	467	19,500	41.8	4,253	9.11	81	14	165	0.35	19	4.0685	24,526	52.52
Leominster - Johnny Appleseed School	690	1,319	1.9	681	0.99	5	1	700	1.01	57	8.2609	2,000	2.90
Leominster High School	1,975	15,000	7.6	350	0.18	15	0	200	0.10	58	2.9367		N/A
Northwest Elementary School	689	17,000	24.7	350	0.51	20	2	750	1.08	27	3.9187	2,500	3.63
Leverett - Leverett Elementary School	160	10,134	63.3	187	1.17	0	0	95	0.59	1	0.6250	3,000	18.75
Lexington - Bridge School	490	16,485	33.6	647	1.32	7	0	1,100	2.24	8	1.6327	0	N/A
Harrington School	405	20,720	51.2	718	1.77	9	0	1,000	2.46	8	1.9753	8,735	21.57
Lexington Christian Academy	350	7,437	21.2	963	2.75	45	2	75	0.21	16	4.5714	16,700	47.71
Lexington High School	2,000	35,000	17.5	1,171	0.59	102	10	130	0.06	21	1.0500	23,700	11.85

2007 School Library Media Report - Media Center Holdings and Total Expenditures

School/Municipality	Number of Students	Print Holdings	Print Holdings/Student	Non Print Holdings	Nonprint Holdings/Student	Subscriptions		Average Weekly Circ	Avg Wk Circ per Student	PC's w/ Internet	Int. PC's per 100 Students	Material Expenditures	Mat'l Exp. per Student
						Print	Electronic						
Lexington - Minuteman Science\Technology High School	700	12,084	17.3	225	0.32	60	0	20	0.02	17	2.4286	23,430	33.47
Lincoln - Carroll School	270	27,431	102.0	538	1.99	20	0	200	0.74	6	2.2222	8,000	29.63
Littleton - Littleton High School	388	7,684	19.8	49	0.13	24	0	0	0.00	40	10.3093	4,000	10.31
Lowell - An Wang Middle School	586	18,275	31.2	505	0.86	8	0	420	0.71	12	2.0478	4,000	6.83
Charlotte Murkland Elementary School	487	4,642	9.5	484	0.99	16	0	700	1.43	1	0.2053	3,000	6.16
Daley Middle School	680	9,118	13.4	640	0.94	15	0	650	0.95	12	1.7647	5,000	7.35
McAuliffe School	380	9,481	25.0	400	1.05	0	0	350	0.92	1	0.2632		N/A
Ludlow - Ludlow High School	1,047	14,631	14.0	67	0.06	18	2	73	0.06	32	3.0564	5,995	5.73
Paul R. Baird Middle School	760	10,434	13.7	14	0.02	15	1	662	0.87	25	3.2895	7,300	9.61
Lynn - Drewicz School	450	11,000	24.4	300	0.67	0	0	400	0.88	10	2.2222	800	1.78
Harrington Elementary School	650	7,500	11.5	100	0.15	7	0	450	0.69	8	1.2308		N/A
Robert L. Ford K-8 NASA Explorer School	810	4,364	5.4	52	0.06	14	0	600	0.74	8	0.9877		N/A
Lynnfield - Lynnfield Middle School	703	8,700	12.4	474	0.67	25	1	580	0.82	42	5.9744		N/A
Summer Street School	488	15,000	30.7	1,140	2.34	0	0	900	1.84	6	1.2295	10,500	21.52
Malden - Malden Catholic High School	680	18,115	26.6	457	0.67	70	2	15	0.02	15	2.2059		N/A
Salemwood School	1,210	14,449	11.9	300	0.25	16	0	550	0.45	18	1.4876	9,100	7.52
Manchester-by-the-Sea - Manchester Essex Regional Middle/High School	600	7,000	11.7	200	0.33	21	1	50	0.08	40	6.6667	22,760	37.93
Brookwood School	404	13,800	34.2	544	1.35	65	8	500	1.23	18	4.4554		N/A
Marblehead - Marblehead High School	983	14,000	14.2	1,455	1.48	8	0	67	0.06	40	4.0692	14,189	14.43
Marion - Tabor Academy	490	15,060	30.7	946	1.93	46	12	85	0.17	39	7.9592		N/A

2007 School Library Media Report - Media Center Holdings and Total Expenditures

School/Municipality	Number of Students	Print Holdings	Print Holdings/Student	Non Print Holdings	Nonprint Holdings/Student	Subscriptions		Average Weekly Circ	Avg Wk Circ per Student	PC's w/ Internet	Int. PC's per 100 Students	Material Expenditures	Mat'l Exp. per Student
						Print	Electronic						
Marlborough - Assabet Valley Regional Technical High School	1,000	13,500	13.5	1,445	1.45	4	2	100	0.10	35	3.5000	13,500	13.50
Marlborough High School	1,572	16,994	10.8	102	0.06	42	1	58	0.03	37	2.3537	19,000	12.09
Marshfield - Furance Brook Middle School	1,100	12,000	10.9	130	0.12	10	0	400	0.36	12	1.0909	7,000	6.36
Marshfield High School	1,314	16,659	12.7	160	0.12	32	2	110	0.08	7	0.5327	11,597	8.83
Mattapoissett - Old Rochester Regional High School	730	9,837	13.5	800	1.10	44	1	90	0.12	5	0.6849	14,300	19.59
Old Rochester Regional Junior High School	470	5,190	11.0	85	0.18	18	1	155	0.32	6	1.2766	4,500	9.57
Maynard - Green Meadow School	535	17,630	33.0	0	0.00	0	0	350	0.65	12	2.2430	10,000	18.69
Maynard High School	350	6,000	17.1	70	0.20	100	1	20	0.05	9	2.5714		N/A
Medfield - Dale Street	479	11,683	24.4	417	0.87	27	1	325	0.67	100	20.8768	11,000	22.96
Medfield High School	893	22,771	25.5	1,145	1.28	50	1	101	0.11	92	10.3024	14,000	15.68
Medford - Columbus School	451	6,794	15.1	82	0.18	0	0	500	1.10	10	2.2173	100	0.22
John J. McGlynn School	1,300	9,000	6.9	130	0.10	4	0	250	0.19	18	1.3846	400	0.31
Medway - Medway High School	798	21,580	27.0	792	0.99	27	0	375	0.46	16	2.0050	2,906	3.64
Melrose - Melrose High School	905	10,328	11.4	575	0.64	14	7	45	0.04	63	6.9613	4,680	5.17
Melrose Middle School	779	7,529	9.7	40	0.05	20	3	175	0.22	38	4.8780	2,722	3.49
Methuen - Marsh Grammar School	1,397	25,693	18.4	1,243	0.89	20	0	0	0.00	18	1.2885	4,000	2.86
Methuen High School	2,031	23,000	11.3	2,078	1.02	30	0	75	0.03	23	1.1324		N/A
Middleborough - Middleborough High School	891	13,723	15.4	161	0.18	41	0	155	0.17	28	3.1425	12,890	14.47
Milford - Milford High School	1,666	14,408	8.6	1,326	0.80	25	2	50	0.03	50	3.0012	7,500	4.50
Millbury - Millbury Jr./Sr. High School	922	11,629	12.6	720	0.78	10	0	250	0.27	12	1.3015	7,800	8.46

2007 School Library Media Report - Media Center Holdings and Total Expenditures

School/Municipality	Number of Students	Print Holdings	Print Holdings/Student	Non Print Holdings	Nonprint Holdings/Student	Subscriptions		Average Weekly Circ	Avg Wk Circ per Student	PC's w/ Internet	Int. PC's per 100 Students	Material Expenditures	Mat'l Exp. per Student
						Print	Electronic						
Millis - Millis High School	327	7,800	23.9	353	1.08	20	0	50	0.15	12	3.6697	1,000	3.06
Millis Middle School	421	5,800	13.8	555	1.32	20	0	80	0.19	12	2.8504	1,000	2.38
Milton - Fontbonne Academy	490	10,234	20.9	937	1.91	21	2	37	0.07	8	1.6327		N/A
Milton Academy	970	46,000	47.4	900	0.93	80	0	200	0.20	13	1.3402	89,945	92.73
Monson - Monson High School	416	9,640	23.2	913	2.19	22	0	100	0.24	11	2.6442		N/A
Montague - Turners Falls High School and Great Falls Middle School	616	19,977	32.4	1,111	1.80	30	0	199	0.32	12	1.9481	3,858	6.26
Nantucket - Cyrus Pierce Middle/Nantucket High School	694	11,641	16.8	706	1.02	105	7	600	0.86	62	8.9337	21,280	30.66
Natick - Memorial Elementary School	440	14,000	31.8	0	0.00	0	0	350	0.79	3	0.6818	1,500	3.41
Natick High School	1,256	24,373	19.4	1,526	1.21	45	9	124	0.09	20	1.5924	14,682	11.69
Walnut Hill School	300	11,677	38.9	2,099	7.00	60	3	75	0.25	15	5.0000		N/A
Wilson Middle School	815	10,748	13.2	600	0.74	20	0	250	0.30	15	1.8405		N/A
Needham - Broadmeadow Elementary School	580	14,300	24.7	137	0.24	3	0	1,500	2.58	8	1.3793	8,000	13.79
Hillside Elementary School	390	15,226	39.0	332	0.85	1	0	790	2.02	26	6.6667		N/A
Mitchell School	468	17,387	37.2	439	0.94	7	2	1,540	3.29	30	6.4103	3,700	7.91
Needham High School	1,377	20,525	14.9	2,062	1.50	15	0	200	0.14	59	4.2847	17,374	12.62
Pollard Middle School	1,150	20,401	17.7	658	0.57	21	5	60	0.05	14	1.2174		N/A
Saint Sebastian's School	354	14,309	40.4	0	0.00	70	2	10	0.02	50	14.1243		N/A
St. Joseph School	665	14,019	21.1	0	0.00	16	0	1,053	1.58	9	1.3534		N/A
New Bedford - New Bedford High School	3,166	33,500	10.6	2,600	0.82	116	6	280	0.08	126	3.9798	45,000	14.21
Roosevelt Middle School	798	16,500	20.7	356	0.45	37	0	300	0.37	26	3.2581	300	0.38

2007 School Library Media Report - Media Center Holdings and Total Expenditures

School/Municipality	Number of Students	Print Holdings	Print Holdings/Student	Non Print Holdings	Nonprint Holdings/Student	Subscriptions		Average Weekly Circ	Avg Wk Circ per Student	PC's w/ Internet	Int. PC's per 100 Students	Material Expenditures	Mat'l Exp. per Student
						Print	Electronic						
Newbury - Triton Reg. Sr. High School	1,100	11,000	10.0	5	0.00	4	1	25	0.02	55	5.0000	8,000	7.27
Newburyport - Bresnahan Elementary School	527	13,451	25.5	766	1.45	16	0	835	1.58	5	0.9488	8,370	15.88
Newburyport High School	786	15,072	19.2	263	0.33	29	0	50	0.06	24	3.0534	5,475	6.97
R.A. Nock Middle School and Molin Upper Elementary	916	18,645	20.4	126	0.14	14	0	325	0.35	18	1.9651		N/A
Newton - Angier School	402	17,026	42.4	164	0.41	7	0	400	0.99	18	4.4776		N/A
Beaver Country Day School	419	17,500	41.8	1,560	3.72	50	8	63	0.15	18	4.2959	19,000	45.35
Lincoln-Eliot School	300	10,527	35.1	30	0.10	9	2	500	1.66	9	3.0000	1,600	5.33
Mt. Alvernia High School	240	13,000	54.2	801	3.34	30	1	37	0.15	25	10.4167	15,950	66.46
Newton Country Day School of the Sacred Heart	387	11,261	29.1	703	1.82	64	13	125	0.32	8	2.0672		N/A
Newton North High School	1,941	31,970	16.5	2,014	1.04	41	5	482	0.24	41	2.1123	21,914	11.29
Newton South High School	1,784	30,752	17.2	1,357	0.76	47	6	150	0.08	23	1.2892	27,674	15.51
Peirce School	324	9,000	27.8	0	0.00	7	2	600	1.85	9	2.7778	4,000	12.35
Norfolk - Freeman-Centennial Elementary School	569	17,387	30.6	1,042	1.83	23	0	54	0.09	5	0.8787		N/A
King Philip Middle School	838	7,160	8.5	453	0.54	13	2	125	0.14	8	0.9547	7,126	8.50
North Adams - C.H. McCann Technical School	513	15,370	30.0	9,890	19.28	59	6	65	0.12	24	4.6784	19,500	38.01
North Andover - North Andover High School	1,350	17,376	12.9	0	0.00	70	1	58	0.04	26	1.9259	19,412	14.38
North Andover Middle School	1,055	12,458	11.8	553	0.52	14	0	150	0.14	13	1.2322		N/A
St. Michael's School	523	7,600	14.5	460	0.88	35	0	550	1.05	5	0.9560	5,000	9.56
North Attleborough - Allen Avenue School	217	6,100	28.1	56	0.26	2	0	440	2.02	0	0.0000	1,344	6.19
Falls Elementary School	282	7,405	26.3	86	0.30	0	0	560	1.98	2	0.7092	682	2.42

2007 School Library Media Report - Media Center Holdings and Total Expenditures

School/Municipality	Number of Students	Print Holdings	Print Holdings/Student	Non Print Holdings	Nonprint Holdings/Student	Subscriptions		Average Weekly Circ	Avg Wk Circ per Student	PC's w/ Internet	Int. PC's per 100 Students	Material Expenditures	Mat'l Exp. per Student
						Print	Electronic						
North Attleborough - Joseph Martin Elementary School	705	10,550	15.0	120	0.17	17	0	0	0.00	4	0.5674	2,016	2.86
North Attleboro High School	1,260	15,774	12.5	9	0.01	11	0	98	0.07	15	1.1905	4,829	3.83
North Attleboro Middle School	1,220	10,753	8.8	122	0.10	8	0	210	0.17	7	0.5738	2,400	1.97
North Reading - North Reading High School	730	10,961	15.0	398	0.55	54	5	25	0.03	18	2.4658	25,000	34.25
Northampton - Clarke School for the Deaf/Center for Oral Education	55	8,984	163.0	155	2.82	22	0	103	1.87	3	5.4545	3,700	67.27
Northampton High School	927	16,360	17.6	1,839	1.98	44	0	200	0.21	18	1.9417	4,000	4.31
Northborough - Algonquin Regional High School	1,396	16,830	12.1	771	0.55	68	2	145	0.10	80	5.7307	31,000	22.21
Lincoln Street School	336	9,207	27.4	207	0.62	6	0	480	1.42	2	0.5952		N/A
Marguerite E. Peaslee School	298	8,334	28.0	247	0.83	16	0	400	1.34	4	1.3423	2,000	6.71
Northbridge - Northbridge High School	697	6,944	10.0	31	0.04	30	0	0	0.00	28	4.0172		N/A
Northfield - Northfield Mt. Hermon School	605	65,697	109.0	4,870	8.05	161	22	375	0.61	67	11.0744	43,247	71.48
Pioneer Valley Regional High School	507	11,374	22.4	796	1.57	35	0	85	0.16	16	3.1558	8,500	16.77
Norton - Norton High School	730	13,882	19.0	881	1.21	44	0	0	0.00	35	4.7945	5,000	6.85
Norwell - Norwell High School	650	10,600	16.3	300	0.46	20	0	5	0.00	40	6.1538	8,000	12.31
Norwood - Dr. Philip O. Coakley Middle School	805	7,174	8.9	28	0.03	23	1	210	0.26	7	0.8696	7,750	9.63
John P. Oldham Elementary School	320	7,380	23.1	125	0.39	10	0	250	0.78	2	0.6250	5,000	15.63
Prescott Elementary School	234	10,261	43.9	84	0.36	2	2	256	1.09	9	3.8462	4,500	19.23
Willett School	275	1,800	6.5	32	0.12	1	0	300	1.09	0	0.0000	2,000	7.27
Oak Bluffs - Martha's Vineyard Regional High School	791	20,015	25.3	2,530	3.20	70	4	0	0.00	39	4.9305	26,000	32.87

2007 School Library Media Report - Media Center Holdings and Total Expenditures

School/Municipality	Number of Students	Print Holdings	Print Holdings/Student	Non Print Holdings	Nonprint Holdings/Student	Subscriptions		Average Weekly Circ	Avg Wk Circ per Student	PC's w/ Internet	Int. PC's per 100 Students	Material Expenditures	Mat'l Exp. per Student
						Print	Electronic						
Oak Bluffs - Oak Bluffs School	406	43,700	108.0	585	1.44	8	1	200	0.49	3	0.7389	10,000	24.63
Oxford - Oxford High School	540	3,000	5.6	0	0.00	20	0	10	0.01	10	1.8519	0	N/A
Palmer - Old Mill Pond School	743	16,000	21.5	759	1.02	21	0	825	1.11	8	1.0767	10,000	13.46
Peabody - Peabody Veterans Mem. High School	2,000	22,000	11.0	680	0.34	36	0	100	0.05	45	2.2500	19,800	9.90
Pepperell - Nissitissit Middle School	570	7,410	13.0	312	0.55	5	0	80	0.14	28	4.9123	5,500	9.65
Peter Fitzpatrick School	600	9,566	15.9	788	1.31	0	0	450	0.75	6	1.0000		N/A
Varnum Brook Middle School	500	12,244	24.5	611	1.22	25	0	800	1.60	6	1.2000		N/A
Pittsfield - Allendale Elementary School	354	5,350	15.1	118	0.33	7	0	350	0.98	0	0.0000		N/A
Conte Community School	480	9,800	20.4	295	0.61	6	0	350	0.72	1	0.2083	500	1.04
Miss Hall's School	196	14,911	76.1	41	0.21	73	5	0	0.00	12	6.1224		N/A
Morningside Community School	435	8,000	18.4	0	0.00	0	0	200	0.45	12	2.7586	3,000	6.90
Pittsfield High School	1,022	10,000	9.8	250	0.24	30	2	100	0.09	37	3.6204	10,000	9.78
Reid Middle School	692	6,190	8.9	452	0.65	21	0	200	0.28	9	1.3006	3,800	5.49
Robert T. Capeless Elementary School	250	6,000	24.0	10	0.04	7	0	125	0.50	24	9.6000	2,500	10.00
Stearns Elementary School	230	5,000	21.7	25	0.11	9	0	175	0.76	24	10.4348	2,600	11.30
Taconic High School	1,000	11,668	11.7	622	0.62	30	3	180	0.18	9	0.9000	9,000	9.00
Williams Elementary School	362	5,350	14.8	0	0.00	0	0	300	0.82	0	0.0000		N/A
Plymouth - Cold Spring Elementary School	247	5,683	23.0	291	1.18	0	0	174	0.70	2	0.8097	2,705	10.95
Indian Brook Elementary School	675	9,000	13.3	150	0.22	0	0	590	0.87	4	0.5926	5,000	7.41
Manomet Elementary School	374	5,500	14.7	500	1.34	7	0	300	0.80	4	1.0695	2,000	5.35
Nathaniel Morton Elementary School	583	11,930	20.5	692	1.19	0	0	510	0.87	70	12.0069	2,800	4.80

2007 School Library Media Report - Media Center Holdings and Total Expenditures

School/Municipality	Number of Students	Print Holdings	Print Holdings/Student	Non Print Holdings	Nonprint Holdings/Student	Subscriptions		Average Weekly Circ	Avg Wk Circ per Student	PC's w/ Internet	Int. PC's per 100 Students	Material Expenditures	Mat'l Exp. per Student
						Print	Electronic						
Plymouth - Plymouth Community Intermediate School	1,243	14,811	11.9	1,470	1.18	37	5	325	0.26	15	1.2068	33,000	26.55
Plymouth South High School	1,499	17,501	11.7	399	0.27	46	5	155	0.10	62	4.1361	34,714	23.16
West Elementary School	377	8,288	22.0	377	1.00	0	0	475	1.26	5	1.3263	0	N/A
Quincy - Atherton Hough Elementary School	265	5,823	22.0	0	0.00	8	0	175	0.66	12	4.5283	1,050	3.96
Atlantic Middle School	505	4,600	9.1	260	0.51	8	0	50	0.09	0	0.0000		N/A
Beechwood Knoll Elementary School	367	6,945	18.9	207	0.56	1	0	730	1.98	3	0.8174		N/A
Broad Meadows Middle School	309	3,260	10.6	237	0.77	8	0	65	0.21	4	1.2945		N/A
C.A. Bernazzani Elementary School	326	7,425	22.8	175	0.54	9	0	350	1.07	5	1.5337	800	2.45
Central Middle School	712	4,116	5.8	20	0.03	10	0	0	0.00	4	0.5618	0	N/A
Lincoln Hancock Elementary School	400	11,000	27.5	25	0.06	0	0	450	1.12	0	0.0000	1,500	3.75
Merrymount Elementary School	311	7,239	23.3	314	1.01	0	0	500	1.60	20	6.4309		N/A
Montclair Elementary School	384	7,148	18.6	570	1.48	8	0	374	0.97	2	0.5208	1,529	3.98
North Quincy High School	1,465	26,671	18.2	402	0.27	45	1	300	0.20	23	1.5700	5,868	4.01
Parker Elementary School	340	6,727	19.8	175	0.51	4	0	315	0.92	0	0.0000	1,420	4.18
Squantum Elementary School	452	8,712	19.3	41	0.09	1	0	500	1.10	2	0.4425		N/A
Sterling Middle School	325	13,000	40.0	20	0.06	10	0	25	0.07	10	3.0769		N/A
Wollaston Elementary School	292	5,802	19.9	162	0.55	12	0	240	0.82	1	0.3425	740	2.53
Raynham - Raynham Middle School	735	9,366	12.7	41	0.06	9	0	150	0.20	12	1.6327	2,000	2.72
Reading - Alice M. Barrows School	407	14,636	36.0	200	0.49	4	1	325	0.79	18	4.4226	1,000	2.46
Austin Preparatory School	732	38,528	52.6	2,164	2.96	90	8	50	0.06	6	0.8197		N/A
Coolidge Middle School	346	7,995	23.1	268	0.77	15	2	75	0.21	10	2.8902		N/A

2007 School Library Media Report - Media Center Holdings and Total Expenditures

School/Municipality	Number of Students	Print Holdings	Print Holdings/Student	Non Print Holdings	Nonprint Holdings/Student	Subscriptions		Average Weekly Circ	Avg Wk Circ per Student	PC's w/ Internet	Int. PC's per 100 Students	Material Expenditures	Mat'l Exp. per Student
						Print	Electronic						
Reading - JW Killam School	431	11,738	27.2	401	0.93	2	0	392	0.90	17	3.9443		N/A
Reading Memorial High School	1,246	16,805	13.5	43	0.03	55	7	160	0.12	70	5.6180	19,000	15.25
W.S. Parker Middle School	599	9,000	15.0	72	0.12	20	0	63	0.10	35	5.8431	3,000	5.01
Rochester - Old Colony Regional Vocational Technical High School	550	10,050	18.3	1,260	2.29	50	0	50	0.09	38	6.9091	8,000	14.55
Rochester Memorial School	564	12,867	22.8	549	0.97	15	3	1,000	1.77	17	3.0142	7,300	12.94
Rockland - Rockland High School (Public Schools)	750	15,000	20.0	690	0.92	0	0	10	0.01	42	5.6000	914	1.22
Rockport - Rockport Elementary School	448	15,000	33.5	209	0.47	10	0	450	1.00	12	2.6786	1,000	2.23
Rowe - Rowe School	62	7,402	119.0	130	2.10	3	0	50	0.80	1	1.6129	4,000	64.52
Salem - Salem High School	1,359	20,549	15.1	1,631	1.20	29	6	125	0.09	45	3.3113	25,000	18.40
Salisbury - Salisbury Elementary School	632	11,000	17.4	315	0.50	12	0	1,500	2.37	6	0.9494	8,000	12.66
Sandwich - Forestdale School	849	19,065	22.5	116	0.14	0	0	850	1.00	14	1.6490	2,300	2.71
Henry T. Wing School	800	13,000	16.3	0	0.00	0	0	500	0.62	15	1.8750	2,000	2.50
Oak Ridge School	951	18,000	18.9	160	0.17	10	0	800	0.84	14	1.4721	5,000	5.26
Sandwich High School	1,100	15,714	14.3	468	0.43	27	0	700	0.63	40	3.6364	15,000	13.64
Saugus - Saugus High School	850	26,000	30.6	2,185	2.57	0	0	160	0.18	4	0.4706		N/A
Scituate - Gates Intermediate School	480	12,000	25.0	32	0.07	27	0	60	0.12	6	1.2500	10,000	20.83
Inly School	272	9,000	33.1	0	0.00	3	0	75	0.27	9	3.3088		N/A
Seekonk - Dr. Kevin M. Hurley Middle School	555	12,263	22.1	292	0.53	14	0	126	0.22	22	3.9640	1,760	3.17
Seekonk High School	648	14,796	22.8	1,381	2.13	49	1	83	0.12	70	10.8025	22,000	33.95
Sharon - Cottage Street Elementary School	429	10,000	23.3	154	0.36	20	0	1,500	3.49	6	1.3986	3,934	9.17

2007 School Library Media Report - Media Center Holdings and Total Expenditures

School/Municipality	Number of Students	Print Holdings	Print Holdings/Student	Non Print Holdings	Nonprint Holdings/Student	Subscriptions		Average Weekly Circ	Avg Wk Circ per Student	PC's w/ Internet	Int. PC's per 100 Students	Material Expenditures	Mat'l Exp. per Student
						Print	Electronic						
Sharon - East Elementary School	440	12,048	27.4	315	0.72	28	0	465	1.05	6	1.3636	3,934	8.94
Heights Elementary School	535	13,000	24.3	415	0.78	20	0	600	1.12	12	2.2430	2,640	4.93
Sharon High School	1,096	12,479	11.4	915	0.83	22	1	150	0.13	24	2.1898	9,500	8.67
Sharon Middle School	854	10,513	12.3	81	0.09	16	0	123	0.14	18	2.1077	7,315	8.57
Sheffield - Berkshire School	370	38,931	105.0	5,462	14.76	115	83	176	0.47	28	7.5676		N/A
Mt. Everett Regional School	370	14,375	38.9	546	1.48	35	5	85	0.22	19	5.1351	17,143	46.33
Undermountain Elementary School	403	12,502	31.0	548	1.36	23	0	400	0.99	25	6.2035	7,165	17.78
Shelburne - Buckland-Shelburne Regional Elementary School	201	9,134	45.4	1,770	8.81	6	0	190	0.94	2	0.9950		N/A
Mohawk Trail Regional High School	637	14,883	23.4	1,068	1.68	42	0	86	0.13	32	5.0235	3,735	5.86
Shirley - Shirley Middle School	254	3,200	12.6	40	0.16	24	0	28	0.11	7	2.7559		N/A
Shrewsbury - Floral Street Elementary School	738	16,730	22.7	866	1.17	6	0	1,200	1.62	2	0.2710	3,350	4.54
Sherwood Middle School	947	13,970	14.8	600	0.63	14	2	500	0.52	13	1.3728	5,000	5.28
Shrewsbury High School	1,633	18,629	11.4	1,498	0.92	4	9	200	0.12	51	3.1231	4,900	3.00
Spring Street School	380	11,384	30.0	341	0.90	9	0	480	1.26	4	1.0526	4,600	12.11
Shutesbury - Shutesbury Elementary	168	12,986	77.3	155	0.92	5	0	350	2.08	3	1.7857	2,400	14.29
Somerville - Prospect Hill Academy Charter Lower School	330	13,425	40.7	167	0.51	0	0	245	0.74	3	0.9091		N/A
Somerville High School	1,400	17,746	12.7	489	0.35	25	0	40	0.02	32	2.2857	7,500	5.36
South Hadley - Pioneer Valley Performing Arts Charter Public School	400	1,000	2.5	530	1.33	40	3	70	0.17	4	1.0000		N/A
South Hadley High School	723	16,787	23.2	2,095	2.90	24	0	60	0.08	20	2.7663		N/A
Southampton - William E. Norris School	560	9,000	16.1	125	0.22	6	0	500	0.89	10	1.7857	750	1.34

2007 School Library Media Report - Media Center Holdings and Total Expenditures

School/Municipality	Number of Students	Print Holdings	Print Holdings/Student	Non Print Holdings	Nonprint Holdings/Student	Subscriptions		Average Weekly Circ	Avg Wk Circ per Student	PC's w/ Internet	Int. PC's per 100 Students	Material Expenditures	Mat'l Exp. per Student
						Print	Electronic						
Southborough - Albert Woodward Memorial School	350	5,912	16.9	466	1.33	3	0	475	1.35	5	1.4286	6,000	17.14
Fay School	385	16,577	43.1	1,315	3.42	71	12	350	0.90	28	7.2727	28,000	72.73
Margaret Neary School	423	9,500	22.5	717	1.70	9	0	630	1.48	4	0.9456	7,000	16.55
St. Mark's School	360	27,826	77.3	360	1.00	111	6	70	0.19	24	6.6667		N/A
Southbridge - Charlton Street Elementary School	410	6,100	14.9	230	0.56	2	0	400	0.97	2	0.4878	5,000	12.20
Eastford Road Elementary School	404	7,560	18.7	856	2.12	0	0	284	0.70	0	0.0000		N/A
Southbridge High School	390	5,166	13.2	75	0.19	38	0	10	0.02	6	1.5385	10,500	26.92
Spencer - David Prouty High School	594	16,649	28.0	785	1.32	47	5	106	0.17	24	4.0404		N/A
Springfield - Alfred M. Glickman Elementary School	295	8,100	27.5	265	0.90	0	0	350	1.18	1	0.3390	2,059	6.98
Alice B. Beal School	320	8,000	25.0	530	1.66	0	0	320	1.00	2	0.6250	1,260	3.94
Freedman Elementary School	280	5,000	17.9	110	0.39	0	0	200	0.71	5	1.7857		N/A
John F. Kennedy Middle School	820	5,000	6.1	50	0.06	6	0	50	0.06	19	2.3171		N/A
MacDuffie School	230	3,500	15.2	10	0.04	12	1	12	0.05	12	5.2174	2,200	9.57
Roger L. Putnam Vocational -Technical High Sch	1,500	6,000	4.0	150	0.10	15	0	100	0.06	8	0.5333	3,000	2.00
Stoneham - Stoneham High School	807	14,674	18.2	987	1.22	25	1	75	0.09	24	2.9740	9,000	11.15
Stoughton - Dr. Robert G. O'Donnell Middle School	980	10,500	10.7	110	0.11	5	0	75	0.07	10	1.0204	4,500	4.59
Stoughton High School	1,201	26,626	22.2	548	0.46	41	0	275	0.22	10	0.8326	7,766	6.47
Stow - Center School	347	4,000	11.5	127	0.37	19	0	500	1.44	5	1.4409	3,000	8.65
Hale Middle School	288	7,616	26.4	399	1.39	20	0	100	0.34	14	4.8611	7,850	27.26

2007 School Library Media Report - Media Center Holdings and Total Expenditures

School/Municipality	Number of Students	Print Holdings	Print Holdings/Student	Non Print Holdings	Nonprint Holdings/Student	Subscriptions		Average Weekly Circ	Avg Wk Circ per Student	PC's w/ Internet	Int. PC's per 100 Students	Material Expenditures	Mat'l Exp. per Student
						Print	Electronic						
Stow - Pompositticut School	290	6,000	20.7	145	0.50	0	0	0	0.00	0	0.0000	3,525	12.16
Sturbridge - Tantasqua Regional High School	1,250	17,000	13.6	840	0.67	60	3	100	0.08	39	3.1200	31,000	24.80
Sudbury - Ephraim Curtis Middle School	1,078	23,503	21.8	800	0.74	18	3	356	0.33	14	1.2987	12,365	11.47
Israel Loring Elementary School	600	20,000	33.3	750	1.25	8	0	750	1.25	12	2.0000	5,000	8.33
Lincoln-Sudbury Regional High School	1,621	28,579	17.6	2,473	1.53	53	10	125	0.07	28	1.7273	21,795	13.45
Peter Noyes Elementary School	644	35,000	54.3	295	0.46	13	0	2,500	3.88	9	1.3975	8,400	13.04
Sutton - Sutton Elementary School	840	16,888	20.1	220	0.26	0	0	684	0.81	26	3.0952	5,000	5.95
Swampscott - Swampscott High School	831	21,674	26.1	228	0.27	22	1	81	0.09	20	2.4067	2,500	3.01
Taunton - Bristol-Plymouth Regional Technical School	1,201	13,000	10.8	921	0.77	93	2	228	0.18	12	0.9992		N/A
Coyle Cassidy High School	732	6,911	9.4	195	0.27	32	9	10	0.01	75	10.2459	8,620	11.78
Templeton - Narragansett Regional High School	1,064	13,890	13.1	1,508	1.42	72	0	175	0.16	40	3.7594	14,767	13.88
Tewksbury - Ryan Elementary School	800	13,787	17.2	239	0.30	6	0	800	1.00	11	1.3750		N/A
Tewksbury Memorial High School	1,137	11,597	10.2	193	0.17	54	0	100	0.08	35	3.0783	1,500	1.32
Tisbury - West Tisbury Elementary School	281	10,480	37.3	828	2.95	30	0	174	0.61	4	1.4235	11,200	39.86
Topsfield - Masconomet Reg. Middle School	700	14,922	21.3	1,655	2.36	48	21	138	0.19	26	3.7143	14,395	20.56
Masconomet Reg. Senior High School	1,450	20,880	14.4	1,567	1.08	46	6	110	0.07	24	1.6552	16,700	11.52
Townsend - North Middlesex Regional High School	1,206	15,101	12.5	813	0.67	28	7	150	0.12	28	2.3217	32,000	26.53
Squannacook Elementary School	412	10,867	26.4	832	2.02	21	0	800	1.94	8	1.9417	5,500	13.35
Upton - Nipmuc Regional Middle/High School	980	11,000	11.2	1,000	1.02	30	2	150	0.15	32	3.2653	30,000	30.61
Uxbridge - Uxbridge High School	557	8,622	15.5	665	1.19	30	0	70	0.12	48	8.6176	12,788	22.96

2007 School Library Media Report - Media Center Holdings and Total Expenditures

School/Municipality	Number of Students	Print Holdings	Print Holdings/Student	Non Print Holdings	Nonprint Holdings/Student	Subscriptions		Average Weekly Circ	Avg Wk Circ per Student	PC's w/ Internet	Int. PC's per 100 Students	Material Expenditures	Mat'l Exp. per Student
						Print	Electronic						
Wakefield - Galvin Middle School	1,100	16,000	14.5	420	0.38	35	0	550	0.50	13	1.1818	4,500	4.09
Our Lady of Nazareth Academy	197	6,155	31.2	755	3.83	44	0	37	0.18	10	5.0761	20,000	101.52
St. Joseph's School	235	10,285	43.8	282	1.20	10	0	140	0.59	33	14.0426	4,000	17.02
Wakefield High School	1,005	14,330	14.3	73	0.07	13	4	150	0.14	29	2.8856	5,507	5.48
Walpole - Norfolk County Agricultural High School	459	7,500	16.3	0	0.00	42	0	30	0.06	14	3.0501		N/A
Waltham - Henry Whittemore School	263	5,113	19.4	249	0.95	25	0	750	2.85	9	3.4221	3,125	11.88
James Fitzgerald School	305	7,115	23.3	124	0.41	16	0	300	0.98	5	1.6393	2,820	9.25
Kennedy Middle School	513	8,875	17.3	445	0.87	12	0	345	0.67	8	1.5595	5,150	10.04
McDevitt Middle School	538	14,253	26.5	708	1.32	11	0	250	0.46	9	1.6729	5,800	10.78
Northeast Elementary School	450	11,565	25.7	295	0.66	17	4	348	0.77	9	2.0000	4,000	8.89
Thomas R. Plympton School	305	9,580	31.4	516	1.69	17	0	11	0.03	10	3.2787	6,385	20.93
Ware - Ware High School	386	13,523	35.0	882	2.28	20	3	0	0.00	20	5.1813		N/A
Wareham - John William Decas School	645	6,950	10.8	0	0.00	10	0	500	0.77	3	0.4651		N/A
Warren - Quaboag Regional Middle/High School	636	14,791	23.3	327	0.51	29	0	45	0.07	25	3.9308	5,650	8.88
Watertown - Watertown High School	710	16,000	22.5	350	0.49	25	4	40	0.05	36	5.0704	10,000	14.08
Watertown Middle School	565	6,200	11.0	261	0.46	15	3	0	0.00	59	10.4425	12,000	21.24
Wayland - Loker Elementary School	363	12,333	34.0	771	2.12	17	1	425	1.17	4	1.1019	11,500	31.68
Wayland High School	900	20,000	22.2	100	0.11	67	4	700	0.77	55	6.1111	22,000	24.44
Wayland Middle School	700	14,528	20.8	12	0.02	10	0	225	0.32	36	5.1429		N/A
Webster - Webster Middle School	566	12,303	21.7	168	0.30	31	0	650	1.14	12	2.1201		N/A
Wellesley - Dana Hall School	485	29,223	60.3	2,853	5.88	176	31	200	0.41	49	10.1031	53,000	109.28

2007 School Library Media Report - Media Center Holdings and Total Expenditures

School/Municipality	Number of Students	Print Holdings	Print Holdings/Student	Non Print Holdings	Nonprint Holdings/Student	Subscriptions		Average Weekly Circ	Avg Wk Circ per Student	PC's w/ Internet	Int. PC's per 100 Students	Material Expenditures	Mat'l Exp. per Student
						Print	Electronic						
Wellesley - Hardy Elementary School	300	12,288	41.0	135	0.45	8	2	500	1.66	17	5.6667		N/A
Schofield Elementary School	385	10,297	26.7	324	0.84	0	1	600	1.55	20	5.1948	1,950	5.06
Wenham - Buker Elementary School	229	7,300	31.9	6	0.03	6	0	200	0.87	55	24.0175		N/A
West Boylston - West Boylston Middle/High School	650	11,643	17.9	621	0.96	17	0	927	1.42	56	8.6154	7,000	10.77
West Newbury - Pentucket Regional High School	867	11,549	13.3	935	1.08	6	0	48	0.05	28	3.2295	5,233	6.04
West Springfield - West Springfield High School	1,431	21,721	15.2	0	0.00	55	7	55	0.03	30	2.0964	17,218	12.03
West Springfield Middle School	945	19,615	20.8	241	0.26	24	1	650	0.68	23	2.4339	13,871	14.68
West Tisbury - Martha's Vineyard Public Charter School	159	11,320	71.2	404	2.54	0	0	143	0.89	0	0.0000	2,000	12.58
Westborough - Fales Elementary School	284	9,166	32.3	44	0.15	5	0	325	1.14	0	0.0000	3,650	12.85
Hastings Elementary School	403	10,665	26.5	202	0.50	10	0	270	0.67	4	0.9926	4,500	11.17
Mill Pond Intermediate School	850	14,532	17.1	121	0.14	28	1	0	0.00	8	0.9412	17,000	20.00
Sarah W. Gibbons Middle School	503	10,069	20.0	439	0.87	0	2	100	0.19	15	2.9821	21,050	41.85
Westborough High School	1,116	19,509	17.5	782	0.70	51	2	80	0.07	42	3.7634	18,700	16.76
Westfield - Juniper Park Elementary School	476	13,735	28.9	530	1.11	0	0	700	1.47	1	0.2101		N/A
Moseley Elementary School	182	9,690	53.2	242	1.33	14	0	300	1.64	1	0.5495	469	2.58
Paper Mill Elementary School	394	14,658	37.2	1,548	3.93	15	0	862	2.18	3	0.7614	1,652	4.19
Westfield High School	1,617	19,457	12.0	518	0.32	57	2	255	0.15	21	1.2987		N/A
Westfield South Middle School	741	17,724	23.9	990	1.34	30	0	915	1.23	23	3.1039	705	0.95
Westfield Vocational Technical High School	500	12,000	24.0	189	0.38	68	0	160	0.32	11	2.2000	5,000	10.00
Westford - Col. John Robinson Elementary School	381	10,000	26.2	275	0.72	10	0	700	1.83	1	0.2625	3,700	9.71

2007 School Library Media Report - Media Center Holdings and Total Expenditures

School/Municipality	Number of Students	Print Holdings	Print Holdings/Student	Non Print Holdings	Nonprint Holdings/Student	Subscriptions		Average Weekly Circ	Avg Wk Circ per Student	PC's w/ Internet	Int. PC's per 100 Students	Material Expenditures	Mat'l Exp. per Student
						Print	Electronic						
Westford - Crisafulli Elementary School	414	9,890	23.9	297	0.72	14	0	900	2.17	5	1.2077	8,000	19.32
Norman E. Day School	405	10,666	26.3	270	0.67	20	0	300	0.74	8	1.9753		N/A
Rita E. Miller School	426	7,831	18.4	194	0.46	20	0	350	0.82	4	0.9390		N/A
Westford Academy	1,580	19,278	12.2	1,871	1.18	55	7,100	0	0.00	50	3.1646		N/A
Westhampton - Hampshire Regional High School	840	14,258	17.0	921	1.10	27	3	145	0.17	31	3.6905		N/A
Weston - The Country School	420	13,072	31.1	418	1.00	15	2	1,500	3.57	8	1.9048	7,700	18.33
Weston High School	732	17,000	23.2	1,175	1.61	0	10	150	0.20	22	3.0055		N/A
Westwood - Deerfield Elementary School	250	11,104	44.4	723	2.89	14	0	500	2.00	7	2.8000	8,775	35.10
Hanlon Elementary School	209	9,538	45.6	484	2.32	15	0	520	2.48	4	1.9139		N/A
Sheehan Elementary School	335	16,943	50.6	883	2.64	23	0	650	1.94	20	5.9701		N/A
Thurston Middle School	688	11,451	16.6	1,034	1.50	15	2	2,400	3.48	22	3.1977	0	N/A
Westwood High School	823	14,171	17.2	560	0.68	19	3	42	0.05	18	2.1871	19,525	23.72
Xaverian Brothers High School	982	13,781	14.0	408	0.42	82	3	75	0.07	17	1.7312	31,300	31.87
Weymouth - Weymouth High School	2,200	20,055	9.1	1,139	0.52	24	0	150	0.06	43	1.9545	4,000	1.82
Whitman - Conley School	587	14,574	24.8	198	0.34	15	0	500	0.85	43	7.3254	2,100	3.58
Duval School	559	9,930	17.8	184	0.33	22	0	800	1.43	10	1.7889	1,000	1.79
Whitman Middle School	585	10,105	17.3	450	0.77	14	0	160	0.27	47	8.0342	8,000	13.68
Whitman-Hanson Regional High School	1,250	19,000	15.2	20	0.02	15	0	50	0.04	16	1.2800		N/A
Wilbraham - Wilbraham and Monson Academy	365	15,000	41.1	600	1.64	35	6	30	0.08	8	2.1918	25,000	68.49
Williamstown - Mt. Greylock Regional High School	689	21,877	31.8	1,874	2.72	59	2	60	0.08	32	4.6444	15,200	22.06

2007 School Library Media Report - Media Center Holdings and Total Expenditures

School/Municipality	Number of Students	Print Holdings	Print Holdings/Student	Non Print Holdings	Nonprint Holdings/Student	Subscriptions		Average Weekly Circ	Avg Wk Circ per Student	PC's w/ Internet	Int. PC's per 100 Students	Material Expenditures	Mat'l Exp. per Student
						Print	Electronic						
Williamstown - Williamstown Public School	442	15,389	34.8	407	0.92	10	0	1,329	3.00	3	0.6787	3,231	7.31
Wilmington - Shawsheen Elementary School	404	11,640	28.8	135	0.33	14	0	900	2.22	1	0.2475	2,000	4.95
West Intermediate School	320	6,500	20.3	115	0.36	16	0	275	0.85	4	1.2500	4,500	14.06
Wilmington High School	1,000	9,200	9.2	45	0.05	25	1	75	0.07	26	2.6000	7,000	7.00
Wilmington Middle School	995	7,358	7.4	291	0.29	13	1	80	0.08	12	1.2060	3,000	3.02
Winchendon - Murdock Middle-High School	635	17,380	27.4	431	0.68	52	0	340	0.53	21	3.3071	2,013	3.17
Winchester - Winchester High School	1,100	16,398	14.9	1,313	1.19	26	5	200	0.18	16	1.4545	10,000	9.09
Winthrop - Winthrop High School	560	5,072	9.1	54	0.10	6	3	20	0.03	23	4.1071	5,000	8.93
Winthrop Middle School	468	5,159	11.0	79	0.17	13	1	125	0.26	10	2.1368	7,155	15.29
Worcester - Bancroft School	557	30,346	54.5	1,038	1.86	88	0	413	0.74	27	4.8474		N/A
Burncoat High School	1,400	12,000	8.6	220	0.16	12	0	150	0.10	55	3.9286		N/A
Claremont Academy	372	8,000	21.5	5	0.01	0	0	10	0.02	5	1.3441		N/A
North High School	1,120	11,500	10.3	1,037	0.93	20	0	85	0.07	26	2.3214	2,000	1.79
Notre Dame Academy	284	16,230	57.1	1,273	4.48	45	10	80	0.28	18	6.3380		N/A
South High Community School	1,475	14,000	9.5	225	0.15	15	0	50	0.03	32	2.1695	500	0.34
Sullivan Middle School	878	11,649	13.3	411	0.47	0	0	130	0.14	9	1.0251		N/A
Venerini Academy	351	9,373	26.7	659	1.88	0	0	1,700	4.84	4	1.1396		N/A
Worcester Academy	644	19,181	29.8	1,046	1.62	63	21	60	0.09	32	4.9689	39,900	61.96
Wrentham - King Philip Regional High School	1,250	15,079	12.1	561	0.45	23	0	20	0.01	36	2.8800	21,525	17.22
Yarmouth - M. E. Small Elementary School	358	13,900	38.8	249	0.70	26	0	475	1.32	5	1.3966	2,300	6.42
Mattacheese Middle School	573	10,034	17.5	759	1.32	52	2	260	0.45	13	2.2688		N/A

2007 School Library Media Report - Media Center Holdings and Total Expenditures

School/Municipality	Number of Students	Print Holdings	Print Holdings/ Student	Non Print Holdings	Nonprint Holdings/ Student	Subscriptions		Average Weekly Circ	Avg Wk Circ per Student	PC's w/ Internet	Int. PC's per 100 Students	Material Expenditures	Mat'l Exp. per Student
						Print	Electronic						
Yarmouth - St. Pius X School	220	5,000	22.7	100	0.45	15	0	200	0.90	17	7.7273	4,000	18.18
Station Avenue Elementary School	439	9,486	21.6	911	2.08	25	5	700	1.59	35	7.9727	6,300	14.35

2007 School Library Media Center Report - Library Media Center Staffing

School Name	Certified Lib. Med. Specialists		Total Staff		Hours Open in a Typical Week	Average Number of Class Visits
	Staff	Hours	Staff	Hours		

Abington - Abington High School	1	40.0	2	55.0	40.0	25
Acton - Acton-Boxboro Reg. High School	1	42.5	5	155.5	42.5	27
R.J. Grey Jr. High School	1	40.0	1	40.0	40.0	25
Agawam - Agawam Junior High School	1	35.0	2	72.5	32.0	20
Benjamin J. Phelps Public Elementary School	1	8.1	2	43.1	35.0	24
Clifford M. Granger School	1	8.1	2	43.1	35.0	24
James Clark Elementary School	1	8.1	2	43.1	35.0	24
Robinson Park Elementary School	1	8.1	2	43.1	35.0	24
Amesbury - Amesbury High School	1	32.5	1	32.5	32.5	14
Amesbury Middle School	1	35.0	1	35.0	39.0	24
Amherst - Amherst Regional High School	1	40.0	3	110.8	42.8	38
Mark's Meadow Elementary School	1	35.0	1	35.0	35.0	20
Wildwood Elementary School	1	35.0	1	35.0	35.0	24
Andover - Bancroft Elementary School	1	35.0	2	40.0	30.0	26
Gr. Lawrence Reg. Voc. Tech.	1	35.0	2	70.0	35.0	20
Phillips Academy	8	265.0	16	437.0	84.0	30
Sanborn School	1	28.0	1	28.0	28.0	
Shawsheen Elementary School	1	12.0	1	12.0	12.0	13

School Name	Certified Lib. Med. Specialists		Total Staff		Hours Open in a Typical Week	Average Number of Class Visits
	Staff	Hours	Staff	Hours		

Arlington - Arlington High School	1	35.0	2	70.0	37.5	24
Ashburnham - John R. Briggs Elementary School	1	35.0	1	35.0	15.0	15
Oakmont Regional High School	1	40.0	1	40.0	39.0	30
Overlook Middle School	1	37.0	1	37.0	35.0	8
Ashby - Ashby Elementary School	1	12.0	1	12.0	12.0	12
Ashfield - Sanderson Academy	0	0.0	1	19.0	32.5	8
Athol - Athol High School	0	0.0	1	33.0	33.0	15
Auburn - Auburn High School	1	35.0	1	35.0	35.0	2
Avon - Avon Middle-High School	1	40.0	1	40.0	38.0	15
Ayer - Ayer Middle/High School	1	40.0	1	40.0	40.0	12
Barnstable - Barnstable High School	1	35.8	2	70.8	39.0	24
Cotuit Elementary School	1	2.0	2	12.5	10.5	6
Hyannis East Elementary School	1	2.0	2	28.0	26.0	16
Hyannis West Elementary School	1	2.0	2	28.0	26.0	16
Marstons Mills East Horace Mann Charter Public School	1	2.0	2	29.5	27.5	25
Osterville Bay Elementary School	1	2.0	2	8.0	6.0	6
Barre - Quabbin Regional Middle/High School	1	40.0	3	112.0	40.5	58

2007 School Library Media Center Report - Library Media Center Staffing

School Name	Certified Lib. Med. Specialists		Total Staff		Hours Open in a Typical Week	Average Number of Class Visits
	Staff	Hours	Staff	Hours		
Bedford - Bedford High School	1	37.5	2	75.5	40.0	25
Hanscom Middle School	1	17.5	2	33.5	35.0	14
Hanscom Primary School	1	12.5	2	47.5	35.0	15
John Glenn Middle School	1	40.0	2	70.0	35.0	30
Belchertown - Belchertown High School	1	35.0	2	70.0	38.5	10
Bellingham - Bellingham High School	1	40.0	1	40.0	37.0	12
Belmont - Belmont Day School	1	39.0	1	39.0	36.0	
Chenery Middle School	1	35.0	4	80.5	43.0	20
Mary Lee Burbank School	0	0.0	1	19.5	19.5	15
Winn Brook School	0	0.0	1	23.5	23.5	19
Beverly - Beverly High School	1	35.0	1	35.0	37.5	20
Briscoe Middle School	1	35.0	1	35.0	32.0	20
Landmark High School	1	45.0	1	45.0	45.0	25
North Beverly Elementary School	1	17.5	1	17.5	19.5	17
Billerica - Billerica Memorial High School	2	52.5	3	70.0	40.0	23
Ditson Elementary School	1	35.0	1	35.0	30.0	28
Marshall Middle School	1	35.0	1	35.0	35.0	95
Vining Elementary School	1	35.0	1	35.0	30.0	15
Bolton - Florence Sawyer School	1	37.5	2	67.5	35.0	28
Nashoba Regional High School	1	37.5	3	105.0	37.5	75

School Name	Certified Lib. Med. Specialists		Total Staff		Hours Open in a Typical Week	Average Number of Class Visits
	Staff	Hours	Staff	Hours		
Boston - Boston Arts Academy/Fenway High School	1	40.0	4	110.0	44.0	20
Boston Latin Academy	2	35.0	3	70.0	40.0	10
Boston Latin School	2	70.0	3	113.0	45.0	22
Elizabeth Seton Academy	1	15.0	1	15.0	15.0	4
Jackson/Mann Elementary School	1	37.5	1	37.5	40.0	23
Madison Park Technical Voc. High School	1	35.0	2	70.0	35.0	60
The Roxbury Latin School	1	40.0	2	60.0	50.0	
Winsor School	1	42.0	4	122.5	42.3	25
Bourne - Upper Cape Cod Regional Technical School	1	40.0	3	92.5	42.0	30
Boxford - Spofford Pond School	1	40.0	2	70.0	35.0	29
Boylston - Tahanto Regional Middle High School	1	35.0	2	48.5	35.0	11
Braintree - Archbishop Williams High School	1	20.0	2	60.0	40.0	5
Archie T. Morrison Elementary School	0	0.0	1	20.0	20.0	22
Braintree High School	1	35.0	2	70.0	41.0	25
East Middle School	0	0.0	1	15.0	3.0	2
Highlands Elementary School	1	21.0	1	21.0	21.0	21
Bridgewater - Bridgewater-Raynham Regional High School	1	35.0	2	70.0	45.0	16
George H. Mitchell Elementary School	0	0.0	1	32.5	32.5	20

2007 School Library Media Center Report - Library Media Center Staffing

School Name	Certified Lib. Med. Specialists		Total Staff		Hours Open in a Typical Week	Average Number of Class Visits
	Staff	Hours	Staff	Hours		

Brockton - Angelo School IRC	1	20.0	2	40.0	37.5	35
Brookline - Baker School	1	35.0	2	71.0	37.5	23
Brookline High School	4	108.8	5	146.3	44.0	8
Driscoll School	1	37.5	2	57.5	33.2	22
Edward Devotion School	1	35.0	2	65.0	37.0	20
Heath School	1	36.3	2	45.8	35.0	20
Lawrence Elementary School	1	36.3	2	66.3	38.3	23
Pierce School	1	37.5	2	77.5	40.0	11
William H. Lincoln School	1	36.3	2	56.3	36.3	23
Cambridge - Baldwin School	1	32.5	1	32.5	23.0	10
Buckingham, Browne and Nichols Upper School	0	0.0	3	100.0	45.0	6
Cambridge Rindge & Latin School	3	71.5	4	101.5	39.5	17
Cambridgeport School	1	30.0	2	36.0	35.0	13
Dr. Martin Luther King Jr. School and AMIGOS School	1	35.0	2	49.0	35.0	24
The Fletcher Maynard Academy	1	32.5	2	52.5	35.0	13
The Graham and Parks School	1	32.5	3	52.5	30.0	13
Haggerty School	1	32.5	2	37.5	32.5	13
John M. Tobin School	1	32.5	2	65.0	32.5	14
Kennedy Longfellow School	1	35.0	2	55.0	30.0	16

School Name	Certified Lib. Med. Specialists		Total Staff		Hours Open in a Typical Week	Average Number of Class Visits
	Staff	Hours	Staff	Hours		

Cambridge - King Open School	1	32.5	2	37.5	35.0	13
Matignon High School	1	36.0	2	39.0	39.0	6
Morse Elementary School	1	32.5	2	38.5	30.0	15
Shady Hill School	0	0.0	3	120.0	40.0	28
Canton - Canton High School	1	35.0	1	35.0	35.0	10
Carlisle - Carlisle School	1	40.0	2	60.0	37.5	30
Charlton - Bay Path Regional Voc. Technical High School	1	35.0	3	115.0	40.0	44
Charlton Middle School	1	35.0	1	35.0	35.0	35
Chelmsford - Byam School	1	1.3	2	33.8	32.5	20
Center School	1	1.3	2	33.8	32.5	19
Chelmsford High School	1	40.0	6	181.5	40.0	28
Harrington School	1	1.3	2	33.8	32.5	20
McCarthy Middle School	1	35.0	2	67.5	35.0	25
Parker Middle School	1	32.5	2	65.0	32.0	13
South Row School	1	1.3	2	33.8	32.5	17
Westlands School	1	1.3	2	33.8	32.5	17
Chelsea - Chelsea High School	2	70.0	4	119.0	49.0	
Williams Middle School	1	37.5	2	75.0	41.5	18
Chicopee - Bellamy Middle School	1	30.0	2	60.0	30.0	25
Chicopee High School	1	30.0	2	60.0	35.0	20
Cohasset - Cohasset Middle/Senior High School	40	200.0	40	200.0	33.0	12

2007 School Library Media Center Report - Library Media Center Staffing

School Name	Certified Lib. Med. Specialists		Total Staff		Hours Open in a Typical Week	Average Number of Class Visits
	Staff	Hours	Staff	Hours		

Concord - Concord Academy	0	0.0	4	71.0	58.0	6
Middlesex School	0	0.0	4	112.0	73.0	2
Willard School	1	37.5	2	58.5	32.0	26
Dalton - Nessacus Regional Middle School	1	40.0	1	40.0	35.0	30
Danvers - Danvers High School	1	37.5	2	77.0	39.5	20
Essex Agricultural and Technical High School	1	40.0	2	77.5	50.0	4
St. Johns Preparatory School	3	112.5	3	112.5	52.0	5
Dartmouth - Dartmouth High School	1	35.0	2	77.5	42.5	15
Dartmouth Middle School	1	35.0	1	35.0	36.0	20
Dedham - Dedham High School	1	35.0	2	65.0	42.5	44
Dedham Middle School	1	35.0	2	55.0	47.0	20
Noble and Greenough School	3	100.0	3	100.0	70.0	12
Riverdale School	1	32.5	1	32.5	32.5	25
Deerfield - Bement School	1	36.0	2	52.0	45.0	12
Deerfield Academy	0	0.0	13	356.0	83.0	12
Eaglebrook School	1	35.0	4	53.0	52.5	25
Frontier Regional School	1	37.5	3	83.0	45.5	30
Douglas - Douglas Elementary School	1	35.0	1	35.0	25.0	19
Douglas High School	1	35.0	1	35.0	42.0	15
Dover - Dover-Sherborn High School	1	40.0	2	77.5	40.0	2

School Name	Certified Lib. Med. Specialists		Total Staff		Hours Open in a Typical Week	Average Number of Class Visits
	Staff	Hours	Staff	Hours		

Dracut - Dracut Senior High School	1	35.0	1	35.0	37.5	25
Dudley - Dudley Middle School	1	35.0	1	35.0	30.0	21
Shepherd Hill Regional High School	1	35.0	2	70.0	40.0	45
Duxbury - Duxbury High School	1	35.0	2	70.0	37.5	16
Duxbury Middle School	1	35.0	1	35.0	33.8	7
East Bridgewater - Central School Library	1	35.0	2	54.0	35.0	28
Gordon W. Mitchell Middle School	1	35.0	2	54.0	35.0	26
East Longmeadow - Birchland Park Middle School	1	37.5	1	37.5	40.5	28
Eastham - Nauset Regional High School	1	37.5	3	55.5	47.5	24
Easton - Oliver Ames High School	1	35.0	1	35.0	39.0	20
Southeastern Regional Vocational Technical High School	1	37.5	2	48.5	46.8	
Everett - Everett High School	1	36.0	1	36.0	38.0	20
Lafayette School	1	35.0	1	35.0	40.0	35
Pope John XXIII Central High School	1	37.0	1	37.0	37.0	8
Fall River - B.M.C. Durfee High School	2	70.0	4	130.0	38.0	25
Bishop Connolly High School	1	15.0	2	40.0	40.0	

2007 School Library Media Center Report - Library Media Center Staffing

School Name	Certified Lib. Med. Specialists		Total Staff		Hours Open in a Typical Week	Average Number of Class Visits
	Staff	Hours	Staff	Hours		

Fall River - Diman Regional Vocational Technical High School	1	40.0	1	40.0	36.3	10
Falmouth - Falmouth Academy	1	20.0	2	60.0	44.0	1
Falmouth High School	2	70.0	4	132.0	40.0	15
North Falmouth Elementary School	1	35.0	1	35.0	34.0	23
Teaticket Elementary School	1	37.5	1	37.5	37.0	27
Framingham - Framingham High School	1	40.0	2	70.0	40.0	30
Marian High School	0	0.0	1	40.0	40.0	12
Potter Road School	0	0.0	1	30.0	30.0	25
St. Bridget School	0	0.0	1	25.0	25.0	18
Franklin - Davis Thayer Elementary School	1	4.5	2	22.0	17.5	15
Franklin High School	1	35.0	2	65.0	41.3	40
Gerald M.Parmenter School	1	10.5	2	28.0	24.5	22
Jefferson Elementary School	1	35.0	2	65.0	37.0	28
John F. Kennedy Memorial School	1	16.0	2	33.5	15.5	26
Remington Middle School	1	35.0	2	65.0	39.0	12
Tri-County Regional Vocational Technical School	1	35.0	1	35.0	41.0	35
Georgetown - Georgetown Middle High School	1	35.0	2	40.0	40.0	37
Gloucester - Gloucester High School	1	43.0	2	75.5	48.5	38

School Name	Certified Lib. Med. Specialists		Total Staff		Hours Open in a Typical Week	Average Number of Class Visits
	Staff	Hours	Staff	Hours		

Grafton - Grafton Memorial High School	1	35.0	2	70.0	35.0	
Grafton Middle School	1	35.0	2	70.0	35.0	30
Granby - Granby Jr./Sr. High School	1	37.5	1	37.5	37.0	
Great Barrington - Monument Mt. Regional High School	1	45.0	2	80.0	45.0	15
Monument Valley Regional Middle School	1	37.5	1	37.5	35.0	14
Muddy Brook Regional Elementary School	1	35.0	1	35.0	35.0	21
Greenfield - Greenfield High School	1	36.3	1	36.3	36.3	15
Groton - Groton-Dunstable Regional High School	1	37.5	2	75.0	40.0	15
Hadley - Hopkins Academy	1	35.0	1	35.0	36.0	22
Halifax - Halifax Elementary School	1	35.0	2	37.5	35.0	31
Hamilton - Hamilton-Wenham Regional High School	1	37.5	2	72.5	45.0	5
Hanover - Cedar Elementary School	1	40.0	1	40.0	30.0	27
Hanover High School	1	37.5	1	37.5	37.5	40
Hanover Middle School	1	37.5	1	37.5	38.0	15
South Shore Vocational Technical High School	1	39.5	1	39.5	39.5	24
Hanson - Hanson Middle School	1	36.0	1	36.0	34.0	20
Indian Head School	1	35.0	1	35.0	35.0	19

2007 School Library Media Center Report - Library Media Center Staffing

School Name	Certified Lib. Med. Specialists		Total Staff		Hours Open in a Typical Week	Average Number of Class Visits
	Staff	Hours	Staff	Hours		

Hanson - Maquan School	1	35.0	1	35.0	17.0	21
Hardwick - Eagle Hill School	0	0.0	2	40.0	60.0	40
Hatfield - Smith Academy	1	32.5	1	32.5	39.0	11
Haverhill - Haverhill High School	1	35.0	2	70.0	40.0	16
Pentucket Lake Elementary School	0	0.0	1	15.0	15.0	15
Whittier Middle School	0	0.0	1	30.0	15.0	16
Whittier Reg. Voc. Tech. High School	1	35.0	1	35.0	40.0	30
Heath - Heath Elementary School	1	15.0	1	15.0	15.0	11
Hingham - Foster Elementary School	1	37.5	2	47.5	35.0	28
Hingham High School	2	75.0	4	103.0	40.0	7
Plymouth River School	1	35.0	2	45.0	32.5	25
South Elementary School	1	35.0	2	45.0	35.0	29
Holden - Wachusett Regional High School	1	35.0	3	122.0	42.5	30
Holliston - Fred Miller Elementary School	1	35.0	1	35.0	35.0	13
Holyoke - E.N. White Elementary	1	37.5	1	37.5	15.0	10
Holyoke High School	1	37.0	1	37.0	38.0	17
Peck Middle School	1	35.0	1	35.0	36.0	12
Sullivan School	1	35.0	1	35.0	35.0	25
William J. Dean Technical High School	1	33.5	1	33.5	33.5	14
Hopkinton - Center Elementary School	0	0.0	2	51.0	35.0	23

School Name	Certified Lib. Med. Specialists		Total Staff		Hours Open in a Typical Week	Average Number of Class Visits
	Staff	Hours	Staff	Hours		

Hopkinton High School	1	35.0	2	70.0	40.0	15
Hopkinton Middle School	1	30.0	2	60.0	34.0	20
Hudson - C.A. Farley Elementary School	1	26.0	1	26.0	26.0	25
Hudson High School	1	40.0	2	75.0	38.5	24
JL Mulready Elementary School	2	15.0	2	15.0	15.0	15
St. Michael Parish Schools	1	35.0	1	35.0	50.0	30
Kingston - Sacred Heart High School	1	40.0	1	40.0	40.0	5
Lakeville - Freetown-Lakeville Middle School	1	30.0	3	90.0	30.0	27
Lancaster - Dr. Franklin Perkins School	1	37.5	1	37.5	37.5	15
Lawrence - Gerard Guilmette School	1	15.0	2	24.0	24.0	16
Lawrence High School	1	37.5	3	112.5	42.5	25
Lee - Lee Elementary School	1	34.0	2	53.5	37.0	24
Lee Middle/High School	1	32.5	2	51.5	37.5	6
Leicester - Leicester High School	1	37.0	1	37.0	37.5	30
Lenox - Lenox Memorial Middle/ High School	1	35.0	3	62.0	39.0	15
Leominster - Johnny Appleseed School	1	36.0	1	36.0	36.0	33
Leominster High School	1	35.0	2	50.0	41.5	25
Northwest Elementary School	1	35.0	1	35.0	35.0	32

2007 School Library Media Center Report - Library Media Center Staffing

School Name	Certified Lib. Med. Specialists		Total Staff		Hours Open in a Typical Week	Average Number of Class Visits
	Staff	Hours	Staff	Hours		
Leverett - Leverett Elementary School	1	35.0	2	67.0	35.0	8
Lexington - Bridge School	1	35.0	2	40.0	35.0	24
Harrington School	1	35.0	1	35.0	35.0	24
Lexington Christian Academy	1	40.0	2	60.0	50.0	8
Lexington High School	2	75.0	5	167.0	47.5	19
Minuteman Science\ Technology High School	1	37.5	2	75.0	40.0	15
Lincoln - Carroll School	1	40.0	1	40.0	40.0	15
Littleton - Littleton High School	1	40.0	3	70.0	40.0	18
Lowell - An Wang Middle School	1	35.0	2	70.0	35.0	18
Charlotte Murkland Elementary School	1	35.0	2	70.0	35.0	25
Daley Middle School	1	35.0	2	70.0	35.0	24
McAuliffe School	0	0.0	1	32.0	30.0	20
Ludlow - Ludlow High School	1	33.6	2	67.6	37.5	21
Paul R. Baird Middle School	1	33.5	2	63.5	33.5	55
Lynn - Drewicz School	1	35.0	1	35.0	28.8	20
Harrington Elementary School	1	30.0	1	30.0	30.0	7
Robert L. Ford K-8 NASA Explorer School	1	35.0	1	35.0	30.0	25
Lynnfield - Lynnfield Middle School	1	35.0	2	55.0	35.0	20
Summer Street School	1	30.0	2	40.0	30.0	23
Malden - Malden Catholic High School	1	40.0	2	80.0	40.0	10

School Name	Certified Lib. Med. Specialists		Total Staff		Hours Open in a Typical Week	Average Number of Class Visits
	Staff	Hours	Staff	Hours		
Salemwood School	1	37.5	1	37.5	37.5	23
Manchester-by-the-Sea - Manchester Essex Regional Middle/High School	1	37.0	2	77.0	43.0	55
Brookwood School	1	40	2	58.0	45.0	25
Marblehead - Marblehead High School	1	36.3	1	36.3	33.8	25
Marion - Tabor Academy	1	40.0	8	148.0	65.0	15
Marlborough - Assabet Valley Regional Technical High School	1	40.0	2	80.0	38.0	6
Marlborough High School	1	35.0	3	95.0	40.0	28
Marshfield - Furance Brook Middle School	1	35.0	1	35.0	35.0	10
Marshfield High School	1	35.0	3	95.0	35.0	7
Mattapoisett - Old Rochester Regional High School	1	35.0	1	35.0	35.0	3
Old Rochester Regional Junior High School	1	35.0	1	35.0	36.5	4
Maynard - Green Meadow School	1	35.0	2	70.0	35.0	46
Maynard High School	1	35.0	3	60.0	35.0	7
Medfield - Dale Street	1	37.5	3	94.0	35.0	21
Medfield High School	1	40.0	6	110.5	43.8	42
Medford - Columbus School	1	10.0	2	45.0	35.0	25

2007 School Library Media Center Report - Library Media Center Staffing

School Name	Certified Lib. Med. Specialists		Total Staff		Hours Open in a Typical Week	Average Number of Class Visits
	Staff	Hours	Staff	Hours		
Medford - John J. McGlynn School	1	30.0	2	60.0	30.0	30
Medway - Medway High School	1	42.5	1	42.5	42.5	24
Melrose - Melrose High School	1	37.5	2	75.0	37.5	2
Melrose Middle School	1	37.5	2	75.0	37.5	38
Methuen - Marsh Grammar School	1	35.0	5	70.0	42.0	30
Methuen High School	3	105.0	6	195.0	39.5	45
Middleborough - Middleborough High School	1	38.0	1	38.0	31.0	20
Milford - Milford High School	0	0.0	1	40.0	37.5	50
Millbury - Millbury Jr./Sr. High School	1	34.5	1	34.5	37.5	6
Millis - Millis High School	1	35.0	3	68.8	33.8	10
Millis Middle School	1	35.0	3	68.8	33.8	10
Milton - Fontbonne Academy	1	35.0	2	55.0	34.8	
Milton Academy	3	120.0	6	200.0	73.0	
Monson - Monson High School	1	40.0	2	55.0	35.0	20
Montague - Turners Falls High School and Great Falls Middle School	1	36.5	1	36.5	36.5	11
Nantucket - Cyrus Pierce Middle/Nantucket High School	1	40.0	6	130.0	50.0	30
Natick - Memorial Elementary School	0	0.0	1	32.0	30.0	28
Natick - Natick High School	1	40.0	3	112.0	42.0	6

School Name	Certified Lib. Med. Specialists		Total Staff		Hours Open in a Typical Week	Average Number of Class Visits
	Staff	Hours	Staff	Hours		
Walnut Hill School	1	40.0	6	76.8	70.8	3
Wilson Middle School	1	37.5	2	72.5	37.0	15
Needham - Broadmeadow Elementary School	1	35.0	2	43.0	35.0	28
Hillside Elementary School	2	28.0	3	35.0	25.5	22
Mitchell School	1	28.0	2	35.0	28.0	25
Needham High School	1	40.0	5	128.8	40.8	30
Pollard Middle School	1	35.0	2	70.0	38.0	24
Saint Sebastian's School	2	95.0	2	95.0	58.0	5
St. Joseph School	1	37.5	2	75.0	37.5	22
New Bedford - New Bedford High School	1	35.0	8	280.0	35.0	80
Roosevelt Middle School	1	35.0	1	35.0	35.0	25
Newbury - Triton Reg. Sr. High School	1	37.3	2	71.1	37.3	60
Newburyport - Bresnahan Elementary School	1	28.0	1	28.0	23.5	24
Newburyport High School	1	35.0	1	35.0	35.0	12
R.A. Nock Middle School and Molin Upper Elementary	2	39.5	2	39.5	35.0	18
Newton - Angier School	1	35.0	1	35.0	35.0	15
Beaver Country Day School	1	37.5	2	75.0	45.0	7
Lincoln-Eliot School	1	40.0	1	40.0	42.0	20
Mt. Alvernia High School	0	0.0	2	60.0	39.5	6
Newton Country Day School of the Sacred Heart	1	40.0	2	80.0	60.0	10

2007 School Library Media Center Report - Library Media Center Staffing

School Name	Certified Lib. Med. Specialists		Total Staff		Hours Open in a Typical Week	Average Number of Class Visits
	Staff	Hours	Staff	Hours		

Newton - Newton North High School	3	120.0	4	155.0	38.0	25
Newton South High School	3	101.5	6	146.0	38.0	22
Peirce School	1	37.5	1	37.5	35.0	17
Norfolk - Freeman-Centennial Elementary School	1	36.0	1	36.0	30.0	30
King Philip Middle School	0	0.0	1	40.0	40.0	3
North Adams - C.H. McCann Technical School	1	37.5	1	37.5	37.5	15
North Andover - North Andover High School	1	3.0	1	3.0	30.0	28
North Andover Middle School	1	37.5	1	37.5	33.8	
St. Michael's School	0	0.0	1	37.5	37.5	28
North Attleborough - Allen Avenue School	1	5.0	2	8.0	9.0	10
Falls Elementary School	1	9.5	2	15.5	12.0	16
Joseph Martin Elementary School	1	21.0	2	27.0	35.0	39
North Attleboro High School	2	70.0	3	100.0	40.0	18
North Attleboro Middle School	1	40.0	1	40.0	40.0	25
North Reading - North Reading High School	1	35.0	1	35.0	35.0	10
Northampton - Clarke School for the Deaf/Center for Oral Education	1	30.0	2	52.0	43.0	8
Northampton High School	1	35.0	2	70.0	39.0	40
Northborough - Algonquin Regional High School	1	39.0	4	144.0	45.0	26

School Name	Certified Lib. Med. Specialists		Total Staff		Hours Open in a Typical Week	Average Number of Class Visits
	Staff	Hours	Staff	Hours		

Lincoln Street School	1	40.0	1	40.0	35.0	17
Marguerite E. Peaslee School	1	35.0	1	35.0	30.0	16
Northbridge - Northbridge High School	1	42.0	1	42.0	42.0	12
Northfield - Northfield Mt. Hermon School	0	0.0	7	270.0	78.5	4
Pioneer Valley Regional High School	1	36.0	2	72.0	37.5	25
Norton - Norton High School	1	35.0	1	35.0	35.0	20
Norwell - Norwell High School	1	42.5	2	52.5	42.5	8
Norwood - Dr. Philip O. Coakley Middle School	1	37.0	2	57.0	39.0	12
John P. Oldham Elementary School	1	37.5	1	37.5	37.5	21
Prescott Elementary School	1	35.0	1	35.0	30.0	18
Willett School	2	14.0	2	14.0	12.0	12
Oak Bluffs - Martha's Vineyard Regional High School	1	33.8	2	66.3	42.5	8
Oak Bluffs School	1	40.0	2	80.0	40.0	21
Oxford - Oxford High School	1	37.5	1	37.5	37.5	1
Palmer - Old Mill Pond School	1	35.0	2	50.0	35.0	35
Peabody - Peabody Veterans Mem. High School	1	36.0	3	85.0	37.0	46

2007 School Library Media Center Report - Library Media Center Staffing

School Name	Certified Lib. Med. Specialists		Total Staff		Hours Open in a Typical Week	Average Number of Class Visits
	Staff	Hours	Staff	Hours		

Pepperell - Nissitissit Middle School	1	35.0	1	35.0	35.0	30
Peter Fitzpatrick School	1	35.0	1	35.0	30.0	21
Varnum Brook Middle School	0	0.0	1	35.0	37.5	22
Pittsfield - Allendale Elementary School	1	24.0	1	24.0	18.0	17
Conte Community School	0	0.0	2	40.0	31.5	23
Miss Hall's School	1	40.0	2	52.0	55.0	1
Morningside Community School	1	37.5	2	40.5	35.0	22
Pittsfield High School	1	35.0	1	35.0	35.0	20
Reid Middle School	1	35.0	1	35.0	35.0	15
Robert T. Capeless Elementary School	1	15.5	2	18.0	15.5	12
Stearns Elementary School	2	19.5	3	22.0	19.5	14
Taconic High School	1	35.0	2	60.0	37.5	8
Williams Elementary School	1	16.0	2	24.0	18.0	16
Plymouth - Cold Spring Elementary School	1	21.0	3	36.0	25.0	9
Indian Brook Elementary School	1	21.0	2	40.0	35.0	12
Manomet Elementary School	1	14.0	3	24.5	23.0	8
Nathaniel Morton Elementary School	1	35.0	2	55.0	30.0	25
Plymouth Community Intermediate School	1	38.0	2	68.0	37.5	24
Plymouth South High School	1	39.0	2	74.0	39.0	25
Plymouth - West Elementary School	1	35.0	2	70.0	35.0	

School Name	Certified Lib. Med. Specialists		Total Staff		Hours Open in a Typical Week	Average Number of Class Visits
	Staff	Hours	Staff	Hours		

Quincy - Atherton Hough Elementary School	2	9.8	2	9.8	9.8	10
Atlantic Middle School	1	17.5	1	17.5	15.0	6
Beechwood Knoll Elementary School	1	21.0	1	21.0	21.0	18
Broad Meadows Middle School	1	15.0	1	15.0	15.0	10
C.A. Bernazzani Elementary School	1	12.0	1	12.0	12.0	12
Central Middle School	1	15.0	1	15.0	15.0	9
Lincoln Hancock Elementary School	2	20.5	2	20.5	18.0	15
Merrymount Elementary School	1	14.0	1	14.0	16.0	16
Montclair Elementary School	1	12.5	1	12.5	9.8	14
North Quincy High School	1	38.0	2	76.0	38.0	64
Parker Elementary School	1	12.5	1	12.5	11.5	10
Squantum Elementary School	1	15.0	1	15.0	15.0	15
Sterling Middle School	1	17.0	1	17.0	17.0	20
Wollaston Elementary School	1	12.0	1	12.0	12.0	10
Raynham - Raynham Middle School	1	35.0	1	35.0	35.0	15
Reading - Alice M. Barrows School	2	35.0	2	35.0	35.0	16
Austin Preparatory School	1	47.5	3	122.5	47.5	5

2007 School Library Media Center Report - Library Media Center Staffing

School Name	Certified Lib. Med. Specialists		Total Staff		Hours Open in a Typical Week	Average Number of Class Visits
	Staff	Hours	Staff	Hours		

Reading - Coolidge Middle School	1	40.0	2	46.0	41.0	5
JW Killam School	1	35.0	1	35.0	35.0	19
Reading Memorial High School	1	40.0	5	128.0	42.5	37
W.S. Parker Middle School	1	35.0	1	35.0	42.5	20
Rochester - Old Colony Regional Vocational Technical High School	1	35.0	1	35.0	35.0	15
Rochester Memorial School	1	35.0	1	35.0	35.0	29
Rockland - Rockland High School (Public Schools)	1	36.3	2	68.8	38.8	18
Rockport - Rockport Elementary School	1	32.0	1	32.0	32.0	22
Rowe - Rowe School	0	0.0	1	21.0	15.0	3
Salem - Salem High School	1	35.0	2	65.0	42.0	80
Salisbury - Salisbury Elementary School	1	35.0	1	35.0	35.0	24
Sandwich - Forestdale School	1	37.5	1	37.5	37.5	30
Henry T. Wing School	1	40.0	1	40.0	38.0	20
Oak Ridge School	1	40.5	2	55.5	40.5	20
Sandwich High School	1	35.0	2	67.5	35.0	42
Saugus - Saugus High School	1	40.0	1	40.0	40.0	15
Scituate - Gates Intermediate School	1	35.0	1	35.0	50.0	1
Inly School	0	0.0	3	48.0	35.0	10
Seekonk - Dr. Kevin M. Hurley Middle School	0	0.0	2	60.0	31.0	15

School Name	Certified Lib. Med. Specialists		Total Staff		Hours Open in a Typical Week	Average Number of Class Visits
	Staff	Hours	Staff	Hours		

Seekonk - Seekonk High School	1	35.3	2	68.3	38.0	25
Sharon - Cottage Street Elementary School	1	14.0	2	44.0	35.0	24
East Elementary School	1	14.0	2	49.0	35.0	15
Heights Elementary School	1	32.0	2	72.0	40.0	26
Sharon High School	1	35.0	2	55.0	42.0	20
Sharon Middle School	1	35.0	2	50.0	35.0	15
Sheffield - Berkshire School	0	0.0	3	127.5	67.7	9
Mt. Everett Regional School	1	37.5	2	53.5	37.5	27
Undermountain Elementary School	1	38.8	2	56.3	37.5	28
Shelburne - Buckland-Shelburne Regional Elementary School	0	0.0	1	32.5	32.5	11
Mohawk Trail Regional High School	1	37.5	2	75.0	37.5	14
Shirley - Shirley Middle School	1	40.0	1	40.0	35.0	
Shrewsbury - Floral Street Elementary School	1	35.0	3	85.5	35.0	30
Sherwood Middle School	1	36.5	2	74.0	37.5	20
Shrewsbury High School	1	37.5	2	75.0	40.0	37
Spring Street School	1	7.0	2	39.5	35.0	21
Shutesbury - Shutesbury Elementary	0	0.0	1	35.0	35.0	14
Somerville - Prospect Hill Academy Charter Lower School	1	40.0	1	40.0	35.0	15

2007 School Library Media Center Report - Library Media Center Staffing

School Name	Certified Lib. Med. Specialists		Total Staff		Hours Open in a Typical Week	Average Number of Class Visits
	Staff	Hours	Staff	Hours		

Somerville - Somerville High School	1	35.0	5	82.0	40.0	20
South Hadley - Pioneer Valley Performing Arts Charter Public School	1	40.0	1	40.0	41.0	
South Hadley High School	1	40.0	1	40.0	40.0	24
Southampton - William E. Norris School	1	32.5	1	32.5	32.5	28
Southborough - Albert Woodward Memorial School	2	24.0	2	24.0	24.0	17
Fay School	2	85.0	5	133.0	45.0	28
Margaret Neary School	1	30.0	1	30.0	20.0	17
St. Mark's School	0	0.0	3	125.0	71.0	3
Southbridge - Charlton Street Elementary School	1	30.0	1	30.0	30.0	25
Eastford Road Elementary School	1	35.0	1	35.0	30.0	20
Southbridge High School	1	35.0	1	35.0	35.0	3
Spencer - David Prouty High School	0	0.0	1	30.0	30.0	11
Springfield - Alfred M. Glickman Elementary School	1	18.0	1	18.0	15.5	12
Alice B. Beal School	1	18.0	1	18.0	15.5	14
Freedman Elementary School	1	17.5	1	17.5	17.5	10
John F. Kennedy Middle School	1	35.0	1	35.0	35.0	15
MacDuffie School	1	34.0	1	34.0	52.0	10
Springfield - Roger L. Putnam Vocational - Technical High Sch	1	35.0	1	35.0	35.0	10

School Name	Certified Lib. Med. Specialists		Total Staff		Hours Open in a Typical Week	Average Number of Class Visits
	Staff	Hours	Staff	Hours		

Stoneham - Stoneham High School	1	35.0	2	52.5	35.0	8
Stoughton - Dr. Robert G. O'Donnell Middle School	1	35.0	2	50.0	40.0	20
Stoughton High School	1	35.0	2	39.0	39.0	20
Stow - Center School	1	35.0	2	67.5	32.5	15
Hale Middle School	1	35.0	1	35.0	35.0	
Pompositticut School	1	35.0	2	67.5	35.0	16
Sturbridge - Tantasqua Regional High School	1	37.0	2	74.0	37.0	20
Sudbury - Ephraim Curtis Middle School	1	32.5	2	62.5	33.5	11
Israel Loring Elementary School	1	30.0	2	45.0	35.0	29
Lincoln-Sudbury Regional High School	2	56.0	4	111.0	37.5	5
Peter Noyes Elementary School	1	34.8	2	49.8	34.2	31
Sutton - Sutton Elementary School	0	0.0	3	70.0	37.5	38
Swampscott - Swampscott High School	1	35.0	2	70.0	37.5	24
Taunton - Bristol-Plymouth Regional Technical School	1	36.0	2	61.0	32.5	15
Coyle Cassidy High School	1	37.5	1	37.5	37.5	2
Templeton - Narragansett Regional High School	1	37.0	2	74.5	40.0	20

2007 School Library Media Center Report - Library Media Center Staffing

School Name	Certified Lib. Med. Specialists		Total Staff		Hours Open in a Typical Week	Average Number of Class Visits
	Staff	Hours	Staff	Hours		
Tewksbury - Ryan Elementary School	0	0.0	2	47.0	36.0	28
Tewksbury Memorial High School	1	21.0	1	21.0	21.0	12
Tisbury - West Tisbury Elementary School	1	30.0	2	60.0	30.0	
Topsfield - Masconomet Reg. Middle School	1	38.0	1	38.0	40.0	25
Masconomet Reg. Senior High School	1	38.0	3	76.0	41.5	22
Townsend - North Middlesex Regional High School	1	40.0	2	77.5	45.0	40
Squannacook Elementary School	1	32.5	1	32.5	24.0	18
Upton - Nipmuc Regional Middle/High School	1	35.0	3	87.5	42.5	15
Uxbridge - Uxbridge High School	1	35.0	1	35.0	40.0	14
Wakefield - Galvin Middle School	1	35.0	1	35.0	35.0	25
Our Lady of Nazareth Academy	0	0.0	1	38.0	38.0	
St. Joseph's School	1	20.0	1	20.0	20.0	8
Wakefield High School	1	37.0	2	72.0	37.5	15
Walpole - Norfolk County Agricultural High School	1	35.0	1	35.0	35.0	40
Waltham - Henry Whittemore School	1	34.3	1	34.3	34.3	33
James Fitzgerald School	1	35.0	1	35.0	30.0	20
Kennedy Middle School	1	35.0	2	70.0	35.0	21

School Name	Certified Lib. Med. Specialists		Total Staff		Hours Open in a Typical Week	Average Number of Class Visits
	Staff	Hours	Staff	Hours		
Waltham - McDevitt Middle School	0	0.0	2	70.0	35.0	10
Northeast Elementary School	1	35.0	1	35.0	35.0	25
Thomas R. Plympton School	1	35.0	1	35.0	35.0	25
Ware - Ware High School	1	33.8	1	33.8	32.5	15
Wareham - John William Decas School	1	35.0	1	35.0	32.0	27
Warren - Quaboag Regional Middle/High School	1	34.0	2	40.0	40.0	45
Watertown - Watertown High School	1	35.0	1	35.0	35.0	15
Watertown Middle School	1	39.0	2	59.0	39.0	20
Wayland - Loker Elementary School	1	35.0	1	35.0	35.0	18
Wayland High School	1	40.0	3	93.0	40.0	10
Wayland Middle School	1	45.0	2	60.0	45.0	28
Webster - Webster Middle School	1	33.8	1	33.8	31.7	20
Wellesley - Dana Hall School	0	0.0	5	170.0	69.0	12
Hardy Elementary School	1	24.0	2	51.5	34.0	16
Schofield Elementary School	1	28.0	2	56.0	35.0	19
Wenham - Buker Elementary School	1	22.0	1	22.0	22.0	12
West Boylston - West Boylston Middle/High School	1	36.5	1	36.5	36.8	

2007 School Library Media Center Report - Library Media Center Staffing

School Name	Certified Lib. Med. Specialists		Total Staff		Hours Open in a Typical Week	Average Number of Class Visits
	Staff	Hours	Staff	Hours		
West Newbury - Pentucket Regional High School	1	36.0	1	36.0	40.0	14
West Springfield - West Springfield High School	1	35.0	2	65.0	41.3	32
West Springfield Middle School	1	35.0	2	67.5	35.5	65
West Tisbury - Martha's Vineyard Public Charter School	1	21.0	2	36.0	25.0	2
Westborough - Fales Elementary School	0	0.0	1	32.5	32.5	16
Hastings Elementary School	0	0.0	1	32.5	32.5	18
Mill Pond Intermediate School	1	32.5	2	65.0	32.5	19
Sarah W. Gibbons Middle School	1	38.0	1	38.0	38.0	35
Westborough High School	1	37.5	3	107.5	41.8	50
Westfield - Juniper Park Elementary School	1	6.5	2	39.0	32.5	27
Moseley Elementary School	1	6.0	2	36.0	22.5	11
Paper Mill Elementary School	1	6.5	2	25.3	18.8	22
Westfield High School	1	35.0	3	95.0	36.0	10
Westfield South Middle School	0	0.0	1	30.0	32.5	44
Westfield Vocational Technical High School	1	32.5	1	32.5	32.5	
Westford - Col. John Robinson Elementary School	1	15.0	2	39.0	30.0	19
Westford - Crisafulli Elementary School	1	15.0	2	39.0	30.0	21

School Name	Certified Lib. Med. Specialists		Total Staff		Hours Open in a Typical Week	Average Number of Class Visits
	Staff	Hours	Staff	Hours		
Norman E. Day School	1	17.5	2	41.5	27.0	21
Rita E. Miller School	1	17.5	2	41.5	27.0	22
Westford Academy	2	80.0	3	86.0	46.0	25
Westhampton - Hampshire Regional High School	1	36.0	2	72.0	37.0	15
Weston - The Country School	1	40.0	2	75.0	35.0	19
Weston High School	1	40.0	3	90.0	42.5	15
Westwood - Deerfield Elementary School	1	35.0	1	35.0	35.0	12
Hanlon Elementary School	1	35.0	1	35.0	35.0	15
Sheehan Elementary School	1	35.0	1	35.0	35.0	22
Thurston Middle School	1	39.5	1	39.5	39.5	23
Westwood High School	1	40.0	2	75.0	40.0	5
Xaverian Brothers High School	1	45.0	3	105.0	42.0	15
Weymouth - Weymouth High School	1	36.0	2	71.0	37.5	25
Whitman - Conley School	1	35.0	1	35.0	35.0	26
Duval School	1	35.0	1	35.0	35.0	25
Whitman Middle School	1	37.5	1	37.5	37.5	12
Whitman-Hanson Regional High School	1	37.5	2	75.0	45.0	15
Wilbraham - Wilbraham and Monson Academy	0	0.0	4	92.0	67.0	12

2007 School Library Media Center Report - Library Media Center Staffing

School Name	Certified Lib. Med. Specialists		Total Staff		Hours Open in a Typical Week	Average Number of Class Visits
	Staff	Hours	Staff	Hours		

Williamstown - Mt. Greylock Regional High School	1	23.0	2	47.0	38.5	28
Williamstown Public School	1	35.0	1	35.0	35.0	27
Wilmington - Shawsheen Elementary School	1	32.5	1	32.5	30.0	22
West Intermediate School	1	27.5	1	27.5	27.5	15
Wilmington High School	1	35.0	2	65.0	35.0	25
Wilmington Middle School	1	35.0	1	35.0	26.0	10
Winchendon - Murdock Middle-High School	1	35.0	2	52.5	35.0	15
Winchester - Winchester High School	1	40.0	2	77.5	40.0	10
Winthrop - Winthrop High School	1	35.0	1	35.0	40.0	15
Winthrop Middle School	1	37.5	1	37.5	40.0	20
Worcester - Bancroft School	1	40.0	4	115.0	47.0	26
Burncoat High School	1	40.0	1	40.0	40.0	23
Claremont Academy	1	13.0	1	13.0	13.0	8
North High School	1	35.0	1	35.0	35.0	18
Notre Dame Academy	1	35.0	2	70.0	42.5	28
South High Community School	1	35.0	2	42.0	34.0	20
Sullivan Middle School	1	35.0	1	35.0	35.0	20
Venerini Academy	1	24.0	2	49.0	49.0	17
Worcester Academy	0	0.0	4	135.0	62.5	16
Wrentham - King Philip Regional High School	1	35.0	2	75.0	40.0	35
Yarmouth - M. E. Small Elementary School	1	32.5	1	32.5	32.5	22

School Name	Certified Lib. Med. Specialists		Total Staff		Hours Open in a Typical Week	Average Number of Class Visits
	Staff	Hours	Staff	Hours		

Mattacheese Middle School	1	35.0	1	35.0	35.0	17
St. Pius X School	0	0.0	1	10.0	15.0	
Station Avenue Elementary School	1	40.0	1	40.0	40.0	21

2007 School Library Media Center Report - Index of Reporting Schools

School Name	Municipality	Type	Grades	Pages	School Name	Municipality	Type	Grades	Pages
Abington High School	Abington	Public	9 - 12	3, 30	Assabet Valley Regional Technical High School	Marlborough	Public	9 - 12	15, 36
Acton-Boxboro Reg. High School	Acton	Public	9 - 12	3, 30	Atherton Hough Elementary School	Quincy	Public	K - 5	20, 39
Agawam Junior High School	Agawam	Public	7, 8	3, 30	Athol High School	Athol	Public	9 - 12	4, 30
Albert Woodward Memorial School	Southborough	Public	2, 3	23, 41	Atlantic Middle School	Quincy	Public	6 - 8	20, 39
Alfred M. Glickman Elementary School	Springfield	Public	K - 5, life skills, tech	23, 41	Auburn High School	Auburn	Public	9 - 12	4, 30
Algonquin Regional High School	Northborough	Public	9 - 12	18, 38	Austin Preparatory School	Reading	Private	6 - 12	20, 39
Alice B. Beal School	Springfield	Public	K - 5, life skills	23, 41	Avon Middle-High School	Avon	Public	7 - 12	4, 30
Alice M. Barrows School	Reading	Public	K - 5	20, 39	Ayer Middle/High School	Ayer	Public	6 - 12	4, 30
Allen Avenue School	North Attleborough	Public	K - 4	17, 38	B.M.C. Durfee High School	Fall River	Public	9 - 12	10, 33
Allendale Elementary School	Pittsfield	Public	K - 5	19, 39	Baker School	Brookline	Public	Pre-K - 8	6, 32
Amesbury High School	Amesbury	Public	9 - 12	3, 30	Baldwin School	Cambridge	Public	K - 8	6, 32
Amesbury Middle School	Amesbury	Public	5 - 8	3, 30	Bancroft Elementary School	Andover	Public	K - 5	3, 30
Amherst Regional High School	Amherst	Public	9 - 12	3, 30	Bancroft School	Worcester	Private	K - 12	28, 44
An Wang Middle School	Lowell	Public	5 - 9	14, 36	Barnstable High School	Barnstable	Public	9 - 12	4, 30
Angelo School IRC	Brockton	Public	K - 6	6, 32	Bay Path Regional Voc. Technical High School	Charlton	Public	9 - 12	7, 32
Angier School	Newton	Public	K - 5	17, 37	Beaver Country Day School	Newton	Private	6 - 12, Pre-K	17, 37
Archbishop Williams High School	Braintree	Private	9 - 12	6, 31	Bedford High School	Bedford	Public	9 - 12	4, 31
Archie T. Morrison Elementary School	Braintree	Public	K - 5	6, 31	Beechwood Knoll Elementary School	Quincy	Public	K - 5	20, 39
Arlington High School	Arlington	Public	9 - 12	3, 30	Belchertown High School	Belchertown	Public	9 - 12	4, 31
Ashby Elementary School	Ashby	Public	K - 5	4, 30	Bellamy Middle School	Chicopee	Public	6 - 8	8, 32
					Bellingham High School	Bellingham	Public	9 - 12	4, 31
					Belmont Day School	Belmont	Private	Pre-K - 8	4, 31
					Bement School	Deerfield	Private	K - 9	9, 33
					Benjamin J. Phelps Public Elementary School	Agawam	Public	K - 4	3, 30

2007 School Library Media Center Report - Index of Reporting Schools

School Name	Municipality	Type	Grades	Pages	School Name	Municipality	Type	Grades	Pages
Berkshire School	Sheffield	Private	9 - 12	22, 40	Burncoat High School	Worcester	Public	9 - 12	28, 44
Beverly High School	Beverly	Public	9 - 12	5, 31	Byam School	Chelmsford	Public	K - 4	7, 32
Billerica Memorial High School	Billerica	Public	9 - 12	5, 31	C.A. Bernazzani Elementary School	Quincy	Public	K - 5	20, 39
Birchland Park Middle School	East Longmeadow	Public	6 - 8	9, 33	C.A. Farley Elementary School	Hudson	Public	1 - 5, Pre-K	13, 35
Bishop Connolly High School	Fall River	Private	9 - 12	10, 33	C.H. McCann Technical School	North Adams	Public	9 - 12, Postgraduate	17, 38
Boston Arts Academy/Fenway High School	Boston	Public	9 - 12	5, 31	Cambridge Rindge & Latin School	Cambridge	Public	9 - 12	7, 32
Boston Latin Academy	Boston	Public	7 - 12	5, 31	Cambridgeport School	Cambridge	Public	K - 8	7, 32
Boston Latin School	Boston	Public	7 - 12	5, 31	Canton High School	Canton	Public	9 - 12	7, 32
Braintree High School	Braintree	Public	9 - 12	6, 31	Carlisle School	Carlisle	Public	K - 8, Preschool	7, 32
Bresnahan Elementary School	Newburyport	Public	1 - 3	17, 37	Carroll School	Lincoln	Private	1 - 8	14, 36
Bridge School	Lexington	Public	K - 5	13, 36	Cedar Elementary School	Hanover	Public	Pre-K - 4	11, 34
Bridgewater-Raynham Regional High School	Bridgewater	Public	9 - 12	6, 31	Center Elementary School	Hopkinton	Public	K, 1	12, 35
Briscoe Middle School	Beverly	Public	6 - 8	5, 31	Center School	Chelmsford	Public	K - 4	7, 32
Bristol-Plymouth Regional Technical School	Taunton	Public	9 - 12, LPN program	24, 41	Center School	Stow	Public	3 - 5	23, 41
Broad Meadows Middle School	Quincy	Public	6 - 8	20, 39	Central Middle School	Quincy	Public	6 - 8	20, 39
Broadmeadow Elementary School	Needham	Public	K - 5	16, 37	Central School Library	East Bridgewater	Public	Pre-K - 3	9, 33
Brookline High School	Brookline	Public	9 - 12	6, 32	Charlotte Murkland Elementary School	Lowell	Public	Pre-K - 4	14, 36
Brookwood School	Manchester-by-the-Sea	Private	Pre-K - 8	14, 36	Charlton Middle School	Charlton	Public	5 - 8	7, 32
Buckingham, Browne and Nichols Upper School	Cambridge	Private	9 - 12	7, 32	Charlton Street Elementary School	Southbridge	Public	2, 3	23, 41
Buckland-Shelburne Regional Elementary School	Shelburne	Public	Pre-K - 6	22, 40	Chelmsford High School	Chelmsford	Public	9 - 12	7, 32
Buker Elementary School	Wenham	Public	K - 5	26, 42	Chelsea High School	Chelsea	Public	9 - 12	8, 32
					Chenery Middle School	Belmont	Public	5 - 8	5, 31

2007 School Library Media Center Report - Index of Reporting Schools

School Name	Municipality	Type	Grades	Pages	School Name	Municipality	Type	Grades	Pages
Chicopee High School	Chicopee	Public	9 - 12	8, 32	Danvers High School	Danvers	Public	9 - 12	8, 33
Claremont Academy	Worcester	Public	7 - 12	28, 44	Dartmouth High School	Dartmouth	Public	9 - 12	8, 33
Clarke School for the Deaf/Center for Oral Education	Northampton	Private	K - 8	18, 38	Dartmouth Middle School	Dartmouth	Public	6 - 8	8, 33
Clifford M. Granger School	Agawam	Public	K - 4	3, 30	David Prouty High School	Spencer	Public	9 - 12	23, 41
Cohasset Middle/Senior High School	Cohasset	Public	6 - 12	8, 32	Davis Thayer Elementary School	Franklin	Public	K - 5	10, 34
Col. John Robinson Elementary School	Westford	Public	K - 2	26, 43	Dedham High School	Dedham	Public	8 - 12	8, 33
Cold Spring Elementary School	Plymouth	Public	K - 5	19, 39	Dedham Middle School	Dedham	Public	6 - 8	8, 33
Columbus School	Medford	Public	K - 5, adaptive, SHORE	15, 36	Deerfield Academy	Deerfield	Private	9 - 12	9, 33
Concord Academy	Concord	Private	9 - 12	8, 33	Deerfield Elementary School	Westwood	Public	K - 5	27, 43
Conley School	Whitman	Public	K - 5	27, 43	Diman Regional Vocational Technical High School	Fall River	Public	9 - 12	10, 34
Conte Community School	Pittsfield	Public	Pre-K - 5	19, 39	Ditson Elementary School	Billerica	Public	K - 5	5, 31
Coolidge Middle School	Reading	Public	6 - 8	20, 40	Douglas Elementary School	Douglas	Public	K - 2	9, 33
Cottage Street Elementary School	Sharon	Public	K - 5	21, 40	Douglas High School	Douglas	Public	8 - 12	9, 33
Cotuit Elementary School	Barnstable	Public	3, 4	4, 30	Dover-Sherborn High School	Dover	Public	9 - 12	9, 33
The Country School	Weston	Public	K - 3	27, 43	Dr. Franklin Perkins School	Lancaster	Private	K - 12	13, 35
Coyle Cassidy High School	Taunton	Private	9 - 12	24, 41	Dr. Kevin M. Hurley Middle School	Seekonk	Public	6 - 8	21, 40
Crisafulli Elementary School	Westford	Public	3 - 5	27, 43	Dr. Martin Luther King Jr. School and AMIGOS School	Cambridge	Public	Pre-K - 8	7, 32
Cyrus Pierce Middle/Nantucket High School	Nantucket	Public	6 - 12	16, 37	Dr. Philip O. Coakley Middle School	Norwood	Public	6 - 8	18, 38
Dale Street	Medfield	Public	4, 5	15, 36	Dr. Robert G. O'Donnell Middle School	Stoughton	Public	6 - 8	23, 41
Daley Middle School	Lowell	Public	5 - 8	14, 36	Dracut Senior High School	Dracut	Public	9 - 12	9, 33
Dana Hall School	Wellesley	Private	6 - 12	25, 42	Drewicz School	Lynn	Public	Pre-K - 5	14, 36
					Driscoll School	Brookline	Public	K - 8	6, 32
					Dudley Middle School	Dudley	Public	5 - 8	9, 33

2007 School Library Media Center Report - Index of Reporting Schools

School Name	Municipality	Type	Grades	Pages	School Name	Municipality	Type	Grades	Pages
Duval School	Whitman	Public	K - 5	27, 43	Foster Elementary School	Hingham	Public	K - 5	12, 35
Duxbury High School	Duxbury	Public	9 - 12	9, 33	Framingham High School	Framingham	Public	9 - 12	10, 34
Duxbury Middle School	Duxbury	Public	6 - 8	9, 33	Franklin High School	Franklin	Public	9 - 12	10, 34
E.N. White Elementary	Holyoke	Public	K - 7	12, 35	Fred Miller Elementary School	Holliston	Public	3 - 5	12, 35
Eagle Hill School	Hardwick	Private	8 - 12	12, 35	Freedman Elementary School	Springfield	Public	K - 5	23, 41
Eaglebrook School	Deerfield	Private	6 - 9	9, 33	Freeman-Centennial Elementary School	Norfolk	Public	3 - 6	17, 38
East Elementary School	Sharon	Public	Pre-K - 5	22, 40	Freetown-Lakeville Middle School	Lakeville	Public	6 - 8	13, 35
East Middle School	Braintree	Public	6 - 8	6, 31	Frontier Regional School	Deerfield	Public	7 - 12	9, 33
Eastford Road Elementary School	Southbridge	Public	K, 1, preschool	23, 41	Furance Brook Middle School	Marshfield	Public	6 - 8	15, 36
Edward Devotion School	Brookline	Public	Pre-K - 8	6, 32	Galvin Middle School	Wakefield	Public	5 - 8	25, 42
Elizabeth Seton Academy	Boston	Private	9 - 12	5, 31	Gates Intermediate School	Scituate	Public	7, 8	21, 40
Ephraim Curtis Middle School	Sudbury	Public	6 - 8	24, 41	George H. Mitchell Elementary School	Bridgewater	Public	K - 4	6, 32
Essex Agricultural and Technical High School	Danvers	Public	9 - 12	8, 33	Georgetown Middle High School	Georgetown	Public	6 - 12	11, 34
Everett High School	Everett	Public	9 - 12	10, 33	Gerald M. Parmenter School	Franklin	Public	K - 5	10, 34
Fales Elementary School	Westborough	Public	K - 3	26, 43	Gerard Guilmette School	Lawrence	Public	1 - 8	13, 35
Falls Elementary School	North Attleborough	Public	K - 5	17, 38	Gloucester High School	Gloucester	Public	9 - 12	11, 34
Falmouth Academy	Falmouth	Private	7 - 12	10, 34	Gordon W. Mitchell Middle School	East Bridgewater	Public	4 - 8	9, 33
Falmouth High School	Falmouth	Public	9 - 12	10, 34	Gr. Lawrence Reg. Voc. Tech.	Andover	Public	9 - 12	3, 30
Fay School	Southborough	Private	1 - 9	23, 41	Grafton Memorial High School	Grafton	Public	9 - 12	11, 34
The Fletcher Maynard Academy	Cambridge	Public	Pre-K - 8	7, 32	Grafton Middle School	Grafton	Public	6 - 8	11, 34
Floral Street Elementary School	Shrewsbury	Public	1 - 4	22, 40	The Graham and Parks School	Cambridge	Public	K - 8	7, 32
Florence Sawyer School	Bolton	Public	K - 8	5, 31	Granby Jr./Sr. High School	Granby	Public	7 - 12	11, 34
Fontbonne Academy	Milton	Private	9 - 12	16, 37	Green Meadow School	Maynard	Public	Pre-K - 3	15, 36
Forestdale School	Sandwich	Public	1 - 8	21, 40					

2007 School Library Media Center Report - Index of Reporting Schools

School Name	Municipality	Type	Grades	Pages	School Name	Municipality	Type	Grades	Pages
Greenfield High School	Greenfield	Public	9 - 12	11, 34	Hillside Elementary School	Needham	Public	K - 5	16, 37
Groton-Dunstable Regional High School	Groton	Public	9 - 12	11, 34	Hingham High School	Hingham	Public	9 - 12	12, 35
Haggerty School	Cambridge	Public	Pre-K - 5	7, 32	Holyoke High School	Holyoke	Public	9 - 12	12, 35
Hale Middle School	Stow	Public	6 - 8	23, 41	Hopkins Academy	Hadley	Public	7 - 12	11, 34
Halifax Elementary School	Halifax	Public	K - 6	11, 34	Hopkinton High School	Hopkinton	Public	9 - 12	12, 35
Hamilton-Wenham Regional High School	Hamilton	Public	6 - 12	11, 34	Hopkinton Middle School	Hopkinton	Public	6 - 8	12, 35
Hampshire Regional High School	Westhampton	Public	7 - 12	27, 43	Hudson High School	Hudson	Public	8 - 12, preschool	13, 35
Hanlon Elementary School	Westwood	Public	K - 5	27, 43	Hyannis East Elementary School	Barnstable	Public	K - 4	4, 30
Hanover High School	Hanover	Public	9 - 12	11, 34	Hyannis West Elementary School	Barnstable	Public	K - 4	4, 30
Hanover Middle School	Hanover	Public	5 - 8	11, 34	Indian Brook Elementary School	Plymouth	Public	K - 4	19, 39
Hanscom Middle School	Bedford	Public	4 - 8	4, 31	Indian Head School	Hanson	Public	3 - 5	11, 34
Hanscom Primary School	Bedford	Public	K - 3	4, 31	Inly School	Scituate	Private	K - 8	21, 40
Hanson Middle School	Hanson	Public	6 - 8	11, 34	Israel Loring Elementary School	Sudbury	Public	K - 5	24, 41
Hardy Elementary School	Wellesley	Public	K - 5	26, 42	JL Mulready Elementary School	Hudson	Public	Pre-K, 1 - 5	13, 35
Harrington Elementary School	Lynn	Public	Pre-K - 5	14, 36	JW Killam School	Reading	Public	K - 5	21, 40
Harrington School	Chelmsford	Public	K - 4	8, 32	Jackson/Mann Elementary School	Boston	Public	Pre-K - 8	5, 31
Harrington School	Lexington	Public	K - 5	13, 36	James Clark Elementary School	Agawam	Public	K - 4	3, 30
Hastings Elementary School	Westborough	Public	Pre-K - 3	26, 43	James Fitzgerald School	Waltham	Public	K - 5	25, 42
Haverhill High School	Haverhill	Public	9 - 12	12, 35	Jefferson Elementary School	Franklin	Public	K - 5	10, 34
Heath Elementary School	Heath	Public	Pre-K - 6	12, 35	John F. Kennedy Memorial School	Franklin	Public	K - 5	10, 34
Heath School	Brookline	Public	Pre-K - 8	6, 32					
Heights Elementary School	Sharon	Public	K - 5	22, 40					
Henry T. Wing School	Sandwich	Public	Pre-K - 8	21, 40					
Henry Whittemore School	Waltham	Public	K - 5	25, 42					
Highlands Elementary School	Braintree	Public	K - 5	6, 31					

2007 School Library Media Center Report - Index of Reporting Schools

School Name	Municipality	Type	Grades	Pages	School Name	Municipality	Type	Grades	Pages
John F. Kennedy Middle School	Springfield	Public	6 - 8	23, 41	Lenox Memorial Middle/ High School	Lenox	Public	6 - 12	13, 35
John Glenn Middle School	Bedford	Public	6 - 8	4, 31	Leominster High School	Leominster	Public	9 - 12	13, 35
John J. McGlynn School	Medford	Public	Pre-K - 8	15, 37	Leverett Elementary School	Leverett	Public	Pre-K - 6	13, 36
John M. Tobin School	Cambridge	Public	K - 8	7, 32	Lexington Christian Academy	Lexington	Private	6 - 12	13, 36
John P. Oldham Elementary School	Norwood	Public	1 - 5	18, 38	Lexington High School	Lexington	Public	9 - 12	13, 36
John R. Briggs Elementary School	Ashburnham	Public	K - 5	3, 30	Lincoln Hancock Elementary School	Quincy	Public	1 - 5	20, 39
John William Decas School	Wareham	Public	K - 5	25, 42	Lincoln Street School	Northborough	Public	K - 5	18, 38
Johnny Appleseed School	Leominster	Public	K - 5	13, 35	Lincoln-Eliot School	Newton	Public	Pre-K - 5	17, 37
Joseph Martin Elementary School	North Attleborough	Public	K - 5	18, 38	Lincoln-Sudbury Regional High School	Sudbury	Public	9 - 12	24, 41
Juniper Park Elementary School	Westfield	Public	K - 5	26, 43	Littleton High School	Littleton	Public	9 - 12	14, 36
Kennedy Longfellow School	Cambridge	Public	Pre-K - 8	7, 32	Loker Elementary School	Wayland	Public	K - 5	25, 42
Kennedy Middle School	Waltham	Public	6 - 8	25, 42	Ludlow High School	Ludlow	Public	9 - 12	14, 36
King Open School	Cambridge	Public	K - 8	7, 32	Lynnfield Middle School	Lynnfield	Public	5 - 8	14, 36
King Philip Middle School	Norfolk	Public	7, 8	17, 38	M. E. Small Elementary School	Yarmouth	Public	4, 5	28, 44
King Philip Regional High School	Wrentham	Public	9 - 12	28, 44	MacDuffie School	Springfield	Private	6 - 12	23, 41
Lafayette School	Everett	Public	K - 8	10, 33	Madison Park Technical Voc. High School	Boston	Public	9 - 12	5, 31
Landmark High School	Beverly	Private	9 - 12	5, 31	Malden Catholic High School	Malden	Private	9 - 12	14, 36
Lawrence Elementary School	Brookline	Public	Pre-K - 8	6, 32	Manchester Essex Regional Middle/High School	Manchester-by-the-Sea	Public	7 - 12	14, 36
Lawrence High School	Lawrence	Public	9 - 12	13, 35	Manomet Elementary School	Plymouth	Public	K - 5	19, 39
Lee Elementary School	Lee	Public	Pre-K - 6	13, 35	Maquan School	Hanson	Public	K - 2	11, 35
Lee Middle/High School	Lee	Public	7 - 12	13, 35	Marblehead High School	Marblehead	Public	9 - 12	14, 36
Leicester High School	Leicester	Public	9 - 12	13, 35	Margaret Neary School	Southborough	Public	3 - 5	23, 41
					Marguerite E. Peaslee School	Northborough	Public	K - 5	18, 38

2007 School Library Media Center Report - Index of Reporting Schools

School Name	Municipality	Type	Grades	Pages	School Name	Municipality	Type	Grades	Pages
Marian High School	Framingham	Private		10, 34	Memorial Elementary School	Natick	Public	K - 4	16, 37
Mark's Meadow Elementary School	Amherst	Public	K - 6	3, 30	Merrymount Elementary School	Quincy	Public	K - 5, special needs	20, 39
Marlborough High School	Marlborough	Public	8 - 12	15, 36	Methuen High School	Methuen	Public	9 - 12	15, 37
Marsh Grammar School	Methuen	Public	K - 8	15, 37	Middleborough High School	Middleborough	Public	9 - 12	15, 37
Marshall Middle School	Billerica	Public	6 - 8	5, 31	Middlesex School	Concord	Private	9 - 12	8, 33
Marshfield High School	Marshfield	Public	9 - 12	15, 36	Milford High School	Milford	Public	K - 12	15, 37
Marstons Mills East Horace Mann Charter Public School	Barnstable	Public	K - 4	4, 30	Mill Pond Intermediate School	Westborough	Public	4 - 6	26, 43
Martha's Vineyard Public Charter School	West Tisbury	Public	K - 12	26, 43	Millbury Jr./Sr. High School	Millbury	Public	7 - 12	15, 37
Martha's Vineyard Regional High School	Oak Bluffs	Public	9 - 12 .Community Resource	18, 38	Millis High School	Millis	Public	9 - 12	16, 37
Mary Lee Burbank School	Belmont	Public	K - 4	5, 31	Millis Middle School	Millis	Public	5 - 8	16, 37
Masconomet Reg. Middle School	Topsfield	Public	7, 8	24, 42	Milton Academy	Milton	Private	K - 12	16, 37
Masconomet Reg. Senior High School	Topsfield	Public	9 - 12	24, 42	Minuteman Science\Technology High School	Lexington	Public	9 - 12, Voc. Postgrad.	14, 36
Matignon High School	Cambridge	Private	9 - 12	7, 32	Miss Hall's School	Pittsfield	Private	9 - 12	19, 39
Mattacheese Middle School	Yarmouth	Public	6 - 8	28, 44	Mitchell School	Needham	Public	K - 5	16, 37
Maynard High School	Maynard	Public	9 - 12	15, 36	Mohawk Trail Regional High School	Shelburne	Public	7 - 12	22, 40
McAuliffe School	Lowell	Public	Pre-K - 4	14, 36	Monson High School	Monson	Public	9 - 12	16, 37
McCarthy Middle School	Chelmsford	Public	5 - 8	8, 32	Montclair Elementary School	Quincy	Public	K - 5	20, 39
McDevitt Middle School	Waltham	Public	6 - 8	25, 42	Monument Mt. Regional High School	Great Barrington	Public	9 - 12	11, 34
Medfield High School	Medfield	Public	9 - 12	15, 36	Monument Valley Regional Middle School	Great Barrington	Public	5 - 8	11, 34
Medway High School	Medway	Public	9 - 12	15, 37	Morningside Community School	Pittsfield	Public	K - 5	19, 39
Melrose High School	Melrose	Public	9 - 12	15, 37	Morse Elementary School	Cambridge	Public	Pre-K - 8	7, 32
Melrose Middle School	Melrose	Public	6 - 8	15, 37	Moseley Elementary School	Westfield	Public	K - 5	26, 43

2007 School Library Media Center Report - Index of Reporting Schools

School Name	Municipality	Type	Grades	Pages	School Name	Municipality	Type	Grades	Pages
Mt. Alvernia High School	Newton	Private	7 - 12	17, 37	Norman E. Day School	Westford	Public	3 - 5	27, 43
Mt. Everett Regional School	Sheffield	Public	7 - 12	22, 40	North Andover High School	North Andover	Public	9 - 12	17, 38
Mt. Greylock Regional High School	Williamstown	Public	7 - 12	27, 44	North Andover Middle School	North Andover	Public	6 - 8	17, 38
Muddy Brook Regional Elementary School	Great Barrington	Public	Pre-K - 4	11, 34	North Attleboro High School	North Attleborough	Public	9 - 12	18, 38
Murdock Middle-High School	Winchendon	Public	7 - 12	28, 44	North Attleboro Middle School	North Attleborough	Public	6 - 8	18, 38
Narragansett Regional High School	Templeton	Public	5 - 12	24, 41	North Beverly Elementary School	Beverly	Public	K - 5	5, 31
Nashoba Regional High School	Bolton	Public	9 - 12	5, 31	North Falmouth Elementary School	Falmouth	Public	Pre-K - 4, SPED-TIP	10, 34
Nathaniel Morton Elementary School	Plymouth	Public	K - 5	19, 39	North High School	Worcester	Public	9 - 12	28, 44
Natick High School	Natick	Public	9 - 12	16, 37	North Middlesex Regional High School	Townsend	Public	9 - 12	24, 42
Nauset Regional High School	Eastham	Public	9 - 12	9, 33	North Quincy High School	Quincy	Public	9 - 12	20, 39
Needham High School	Needham	Public	9 - 12	16, 37	North Reading High School	North Reading	Public	9 - 12	18, 38
Nessacus Regional Middle School	Dalton	Public	6 - 8	8, 33	Northampton High School	Northampton	Public	9 - 12	18, 38
New Bedford High School	New Bedford	Public	9 - 12	16, 37	Northbridge High School	Northbridge	Public	9 - 12	18, 38
Newburyport High School	Newburyport	Public	9 - 12	17, 37	Northeast Elementary School	Waltham	Public	Pre-K - 5	25, 42
Newton Country Day School of the Sacred Heart	Newton	Private	5 - 12	17, 37	Northfield Mt. Hermon School	Northfield	Private	9 - 12, Postgraduate	18, 38
Newton North High School	Newton	Public	9 - 12	17, 38	Northwest Elementary School	Leominster	Public	K - 5	13, 35
Newton South High School	Newton	Public	9 - 12	17, 38	Norton High School	Norton	Public	9 - 12	18, 38
Nipmuc Regional Middle/High School	Upton	Public	8 - 12	24, 42	Norwell High School	Norwell	Public	9 - 12	18, 38
Nissitissit Middle School	Pepperell	Public	6 - 8	19, 39	Notre Dame Academy	Worcester	Private	9 - 12	28, 44
Noble and Greenough School	Dedham	Private	7 - 12	9, 33	Oak Bluffs School	Oak Bluffs	Public	K - 8	19, 38
Norfolk County Agricultural High School	Walpole	Public	9 - 12	25, 42	Oak Ridge School	Sandwich	Public	K - 8, Cape Collaborative	21, 40
					Oakmont Regional High School	Ashburnham	Public	9 - 12	3, 30

2007 School Library Media Center Report - Index of Reporting Schools

School Name	Municipality	Type	Grades	Pages	School Name	Municipality	Type	Grades	Pages
Old Colony Regional Vocational Technical High School	Rochester	Public	9 - 12	21, 40	Phillips Academy	Andover	Private	9 - 12, Postgraduate	3, 30
Old Mill Pond School	Palmer	Public	Pre-K - 4	19, 38	Pierce School	Brookline	Public	Pre-K - 8	6, 32
Old Rochester Regional High School	Mattapoissett	Public	9 - 12	15, 36	Pioneer Valley Performing Arts Charter Public School	South Hadley	Public	7 - 12	22, 41
Old Rochester Regional Junior High School	Mattapoissett	Public	7, 8	15, 36	Pioneer Valley Regional High School	Northfield	Public	7 - 12	18, 38
Oliver Ames High School	Easton	Public	10 - 12	9, 33	Pittsfield High School	Pittsfield	Public	9 - 12	19, 39
Osterville Bay Elementary School	Barnstable	Public	3, 4	4, 30	Plymouth Community Intermediate School	Plymouth	Public	6 - 9	20, 39
Our Lady of Nazareth Academy	Wakefield	Private	9 - 12	25, 42	Plymouth River School	Hingham	Public	K - 5	12, 35
Overlook Middle School	Ashburnham	Public	6 - 8	4, 30	Plymouth South High School	Plymouth	Public	9 - 12	20, 39
Oxford High School	Oxford	Public	9 - 12	19, 38	Pollard Middle School	Needham	Public	6 - 8	16, 37
Paper Mill Elementary School	Westfield	Public	K - 5	26, 43	Pompositicut School	Stow	Public	K - 2	24, 41
Parker Elementary School	Quincy	Public	K - 5	20, 39	Pope John XXIII Central High School	Everett	Private	9 - 12	10, 33
Parker Middle School	Chelmsford	Public	5 - 8	8, 32	Potter Road School	Framingham	Public	K - 5	10, 34
Paul R. Baird Middle School	Ludlow	Public	6 - 8	14, 36	Prescott Elementary School	Norwood	Public	K - 5	18, 38
Peabody Veterans Mem. High School	Peabody	Public	9 - 12	19, 38	Prospect Hill Academy Charter Lower School	Somerville	Public	K - 4	22, 40
Peck Middle School	Holyoke	Public	7, 8	12, 35	Quabbin Regional Middle/High School	Barre	Public	7 - 12	4, 30
Peirce School	Newton	Public	K - 5	17, 38	Quaboag Regional Middle/High School	Warren	Public	7 - 12	25, 42
Pentucket Lake Elementary School	Haverhill	Public	K - 5	12, 35	R.A. Nock Middle School and Molin Upper Elementary	Newburyport	Public	4 - 8	17, 37
Pentucket Regional High School	West Newbury	Public	9 - 12	26, 43	R.J. Grey Jr. High School	Acton	Public	7, 8	3, 30
Peter Fitzpatrick School	Pepperell	Public	Pre-K - 2	19, 39	Raynham Middle School	Raynham	Public	5 - 8	20, 39
Peter Noyes Elementary School	Sudbury	Public	Pre-K - 5	24, 41	Reading Memorial High School	Reading	Public	9 - 12	21, 40

2007 School Library Media Center Report - Index of Reporting Schools

School Name	Municipality	Type	Grades	Pages	School Name	Municipality	Type	Grades	Pages
Reid Middle School	Pittsfield	Public	6 - 8	19, 39	Sarah W. Gibbons Middle School	Westborough	Public	7, 8	26, 43
Remington Middle School	Franklin	Public	6 - 8	10, 34	Saugus High School	Saugus	Public	9 - 12	21, 40
Rita E. Miller School	Westford	Public	K - 2	27, 43	Schofield Elementary School	Wellesley	Public	K - 5	26, 42
Riverdale School	Dedham			9, 33	Seekonk High School	Seekonk	Public	9 - 12	21, 40
Robert L. Ford K-8 NASA Explorer School	Lynn	Public	K - 8	14, 36	Shady Hill School	Cambridge	Private	K - 8	7, 32
Robert T. Capeless Elementary School	Pittsfield	Public	Pre-K - 5	19, 39	Sharon High School	Sharon	Public	9 - 12	22, 40
Robinson Park Elementary School	Agawam	Public	K - 4	3, 30	Sharon Middle School	Sharon	Public	6 - 8	22, 40
Rochester Memorial School	Rochester	Public	K - 6	21, 40	Shawsheen Elementary School	Andover	Public	Pre-K - 2	3, 30
Rockland High School (Public Schools)	Rockland	Public	8 - 12	21, 40	Shawsheen Elementary School	Wilmington	Public	1 - 3	28, 44
Rockport Elementary School	Rockport	Public	K - 5	21, 40	Sheehan Elementary School	Westwood	Public	K - 5	27, 43
Roger L. Putnam Vocational - Technical High Sch	Springfield	Public	9 - 12	23, 41	Shepherd Hill Regional High School	Dudley	Public	9 - 12	9, 33
Roosevelt Middle School	New Bedford	Public	6 - 8	16, 37	Sherwood Middle School	Shrewsbury	Public	5, 6	22, 40
Rowe School	Rowe	Public	Pre-K - 6	21, 40	Shirley Middle School	Shirley	Public	5 - 8	22, 40
The Roxbury Latin School	Boston	Private	7 - 12	5, 31	Shrewsbury High School	Shrewsbury	Public	9 - 12	22, 40
Ryan Elementary School	Tewksbury	Public	5, 6	24, 42	Shutesbury Elementary	Shutesbury	Public	Pre-K - 6	22, 40
Sacred Heart High School	Kingston	Private	7 - 12	13, 35	Smith Academy	Hatfield	Public	7 - 12	12, 35
Saint Sebastian's School	Needham	Private	7 - 12	16, 37	Somerville High School	Somerville	Public	9 - 12	22, 41
Salem High School	Salem	Public	9 - 12	21, 40	South Elementary School	Hingham	Public	K - 5	12, 35
Salemwood School	Malden	Public	K - 8	14, 36	South Hadley High School	South Hadley	Public	9 - 12	22, 41
Salisbury Elementary School	Salisbury	Public	Pre-K-6	21, 40	South High Community School	Worcester	Public	9 - 12	28, 44
Sanborn School	Andover	Public	K - 5	3, 30	South Row School	Chelmsford	Public	K - 4	8, 32
Sanderson Academy	Ashfield	Public	K - 6	4, 30	South Shore Vocational Technical High School	Hanover	Public	9 - 12	11, 34
Sandwich High School	Sandwich	Public	9 - 12	21, 40	Southbridge High School	Southbridge	Public	9 - 12	23, 41

2007 School Library Media Center Report - Index of Reporting Schools

School Name	Municipality	Type	Grades	Pages	School Name	Municipality	Type	Grades	Pages
Southeastern Regional Vocational Technical High School	Easton	Public	9 - 12, Post Secondary	9, 33	Taconic High School	Pittsfield	Public	9 - 12	19, 39
Spofford Pond School	Boxford	Public	3 - 6	6, 31	Tahanto Regional Middle High School	Boylston	Public	7 - 12	6, 31
Spring Street School	Shrewsbury	Public	1 - 5	22, 40	Tantasqua Regional High School	Sturbridge	Public	9 - 12	24, 41
Squannacook Elementary School	Townsend	Public	3 - 5	24, 42	Teaticket Elementary School	Falmouth	Public	Pre-K - 4	10, 34
Squantum Elementary School	Quincy	Public	K - 5	20, 39	Tewksbury Memorial High School	Tewksbury	Public	9 - 12	24, 42
St. Bridget School	Framingham	Private	Pre-K - 8	10, 34	Thomas R. Plympton School	Waltham	Public	K - 5	25, 42
St. Johns Preparatory School	Danvers	Private	9 - 12	8, 33	Thurston Middle School	Westwood	Public	6 - 8	27, 43
St. Joseph School	Needham	Private	K - 8	16, 37	Tri-County Regional Vocational Technical School	Franklin	Public	9 - 12	10, 34
St. Joseph's School	Wakefield	Private	1 - 8	25, 42	Triton Reg. Sr. High School	Newbury	Public	9 - 12	17, 37
St. Mark's School	Southborough	Private	9 - 12	23, 41	Turners Falls High School and Great Falls Middle School	Montague	Public	6 - 12	16, 37
St. Michael Parish Schools	Hudson	Private	Pre-K - 12	13, 35	Undermountain Elementary School	Sheffield	Public	Pre-K - 6	22, 40
St. Michael's School	North Andover	Private	Pre-K - 8, Nursery	17, 38	Upper Cape Cod Regional Technical School	Bourne	Public	9 - 12, Postgrad nursing	6, 31
St. Pius X School	Yarmouth	Private	Pre-K - 8	29, 44	Uxbridge High School	Uxbridge	Public	9 - 12	24, 42
Station Avenue Elementary School	Yarmouth	Public	K - 3	29, 44	Varnum Brook Middle School	Pepperell	Public	3 - 5	19, 39
Stearns Elementary School	Pittsfield	Public	K - 5	19, 39	Venerini Academy	Worcester	Private	Pre-K - 8	28, 44
Sterling Middle School	Quincy	Public	6 - 8	20, 39	Vining Elementary School	Billerica	Public	K - 5	5, 31
Stoneham High School	Stoneham	Public	9 - 12	23, 41	W.S. Parker Middle School	Reading	Public	6 - 8	21, 40
Stoughton High School	Stoughton	Public	9 - 12	23, 41	Wachusett Regional High School	Holden	Public	9 - 12	12, 35
Sullivan Middle School	Worcester	Public	7, 8	28, 44	Wakefield High School	Wakefield	Public	9 - 12	25, 42
Sullivan School	Holyoke	Public	K - 8	12, 35	Walnut Hill School	Natick	Private	9 - 12	16, 37
Summer Street School	Lynnfield	Public	Pre-K - 4	14, 36	Ware High School	Ware	Public	8 - 12, Pre-K	25, 42
Sutton Elementary School	Sutton	Public	K - 5	24, 41					
Swampscott High School	Swampscott	Public	9 - 12	24, 41					
Tabor Academy	Marion	Private	9 - 12	14, 36					

2007 School Library Media Center Report - Index of Reporting Schools

School Name	Municipality	Type	Grades	Pages	School Name	Municipality	Type	Grades	Pages
Watertown High School	Watertown	Public	9 - 12	25, 42	Whittier Reg. Voc. Tech. High School	Haverhill	Public	9 - 12	12, 35
Watertown Middle School	Watertown	Public	6 - 8	25, 42	Wilbraham and Monson Academy	Wilbraham	Private	6 - 12, Postgraduate	27, 43
Wayland High School	Wayland	Public	9 - 12	25, 42	Wildwood Elementary School	Amherst	Public	K - 6	3, 30
Wayland Middle School	Wayland	Public	6 - 8	25, 42	Willard School	Concord	Public	K - 5	8, 33
Webster Middle School	Webster	Public	3 - 6	25, 42	Willett School	Norwood	Public	K	18, 38
West Boylston Middle/High School	West Boylston	Public	6 - 12	26, 42	William E. Norris School	Southampton	Public	Pre-K - 6	22, 41
West Elementary School	Plymouth	Public	K - 5	20, 39	William H. Lincoln School	Brookline	Public	Pre-K - 8	6, 32
West Intermediate School	Wilmington	Public	4, 5	28, 44	William J. Dean Technical High School	Holyoke	Public	9 - 12	12, 35
West Springfield High School	West Springfield	Public	9 - 12	26, 43	Williams Elementary School	Pittsfield	Public	K - 5	19, 39
West Springfield Middle School	West Springfield	Public	6 - 8	26, 43	Williams Middle School	Chelsea	Public	5 - 8	8, 32
West Tisbury Elementary School	Tisbury	Public	K - 8	24, 42	Williamstown Public School	Williamstown	Public	K - 6, Preschool	28, 44
Westborough High School	Westborough	Public	9 - 12	26, 43	Wilmington High School	Wilmington	Public	9 - 12	28, 44
Westfield High School	Westfield	Public	9 - 12	26, 43	Wilmington Middle School	Wilmington	Public	6 - 8	28, 44
Westfield South Middle School	Westfield	Public	6 - 8	26, 43	Wilson Middle School	Natick	Public	5 - 8	16, 37
Westfield Vocational Technical High School	Westfield	Public	9 - 12	26, 43	Winchester High School	Winchester	Public	9 - 12	28, 44
Westford Academy	Westford	Public	9 - 12	27, 43	Winn Brook School	Belmont	Public	Pre-K - 4	5, 31
Westlands School	Chelmsford	Public	K - 4	8, 32	Winsor School	Boston	Private	5 - 12	5, 31
Weston High School	Weston	Public	9 - 12	27, 43	Winthrop High School	Winthrop	Public	9 - 12	28, 44
Westwood High School	Westwood	Public	9 - 12	27, 43	Winthrop Middle School	Winthrop	Public	6 - 8	28, 44
Weymouth High School	Weymouth	Public	9 - 12	27, 43	Wollaston Elementary School	Quincy	Public	Pre-K - 5, spec. needs	20, 39
Whitman Middle School	Whitman	Public	6 - 8	27, 43	Worcester Academy	Worcester	Private	6 - 12	28, 44
Whitman-Hanson Regional High School	Whitman	Public	9 - 12	27, 43	Xaverian Brothers High School	Westwood	Private	9 - 12	27, 43
Whittier Middle School	Haverhill	Public	6 - 8	12, 35					

Appendix- Definitions for Data

Fall 2007 Massachusetts School Library Media Center Report

Column Heading	Definition
Avg. Number of Class Visits	Total number of class visits to the library in a typical week whether on a fixed or flexible schedule.
Average Weekly Circulation	Average number of items lent during a typical week.
Avg. Wk. Circ per Student	Average number of items lent during a typical week divided by the number of students.
Certified Lib. Med. Specialists	Certified Library Media Specialists - Librarians that met Massachusetts Department of Education certification requirements as school library media specialists.
Certified Lib. Med. Specialists, Hours	Sum of weekly hours worked by Certified Library Media Specialists in the library.
Certified Lib. Med. Specialists, Staff	Total number of Certified School Library Media Specialists.
Grades	Grades served by the school.
Hours Open in Typical Week	Hours the library media center was scheduled to be staffed and open for students.
Internet PC's per 100 students	Number of personal computers available to students in or under the control of the library divided by the number of students and multiplied by 100.
Materials Expenditures	Expenditures during school year 2006-2007 for items that circulated to patrons or were used by library patrons within the library building.
Mat'l Exp. Per Student	Materials expenditure divided by the number of students.
Nonprint Holdings	Video, audio, materials in electronic format (including e-books and download audio and video), and "other" materials.
Nonprint Holdings/Student	Number of nonprint holdings divided by the number of students.
Number of Students	Number of students enrolled in the school as of Fall 2007.
PC's with Internet	Number of personal computers available to students in or under the control of the library with access to the Internet.
Print Holdings	Books and volumes of serials.
Print Holding/Student	Number of print holdings divided by the number of students.

Subscriptions, Print	Arrangements by which, in return for a sum paid in advance, periodicals, newspapers, or other serials are provided for a specified number of issues, or for a specific period of time. This is a count of print titles, including duplicates, not of individual issues.
Subscriptions, Electronic	The number of electronic subscriptions paid for by the library.
Total Staff, Hours	Sum of weekly hours worked by all paid library staff members including certified library media specialists, Fall 2007.
Total Staff, Staff	Total number of paid library staff including certified library media specialists, Fall 2007.
Type	Distinction between public or private school.

Massachusetts Public Library Data Reports:

Children's Services, xxxx Data (available in February)

Selected statistics related to children's services including staffing, programming, holdings and circulation.

Circulation and Holdings Report, FYxxxx (available in January)

Various public library circulation and holdings raw data. Also includes circulation per FTE, per hour open and per capita and holdings per capita data.

Education & Staffing Report, 7-1-xxxx (available in January)

Public library staffing levels and distribution of the staff's highest educational level. Staffing level data includes: total full-time equivalencies (FTE), number full time and part time, and FTE for MLS, librarian, children's librarian and non-custodian positions as well as total hours open per non-custodian FTE. Director's education level and length of work week are displayed.

Electronic Services, FYxxxx Data (available in May)

Selected statistics related to electronic services including: website hits, number of users of public Internet computers, electronic subscriptions and materials in electronic format.

Featured Reports, FYxxxx Data (available in the spring)

Reports on changing topics present public library data not displayed in other reports.

Financial Statistics Report, FYxxxx Data (available in February)

Raw and per capita figures for each reporting public library's (including branches) total municipal appropriation, operating income, and salary, materials, other and total operating expenditures. Also included are percent of total operating expenditures spent for salaries, materials and other expenditures.

The FYxxxx Municipal Pie...What's Your Share? (available in January)

Relates the amount expended from the general fund by each city and town on public library service, to the amount expended to operate the entire municipality.

Public Library Outlets, FYxxxx Data (available in May)

Selected statistics relating to public library outlets including: staffing, holdings and circulation.

Rankings Report, xxxx Data (available in March)

Each municipality's rank within its population group and within the entire state based on its library's per capita values for certain income and expenditure data. For services, the indicators are: FTE per 10,000 population, MLS FTE per 10,000, hours open per week, direct and total circulation per capita and holdings per capita.

Salaries Report, 7-1-xxxx (available in January)

Hourly minimum and maximum salaries for up to 17 public library position classifications from Library Director to Custodian. Annual salary for the Library Director is also displayed.

Services Report, FYxxxx (available in January)

Services data includes number of terminals with Internet, average weekly visits, reference questions and hours open. Counts are provided for weekend days open, branches, adult and children's programs and attendance. Average hours open on weekends is also shown.

Summary Tables and Graphs, xxxx Data (available in March)

Statewide, population group and regional totals of various incomes, expenditures, holdings, circulation, services and staffing data. Subject index provided.

Massachusetts Academic Library Data, Fall xxxx, Selected Statistics (available biennially)

Massachusetts School Library Media Center Report, Fall xxxx (available in May)

Massachusetts Special Library Statistics Report, FYxxxx Data (available biennially in November)

The reports are available in PDF format and the related spreadsheet and database files are available for downloading from the Board's web site (<http://mblc.state.ma.us/advisory/statistics/index.php>)