



# Massachusetts Libraries

BOARD OF LIBRARY COMMISSIONERS

## The FY2014 Municipal Pie What's Your Share?

March 2016

**Massachusetts Board of Library Commissioners**

98 N. Washington St., Suite 401, Boston, MA 02114

P: 800-952-7403 (in-state only)

P: 617-725-1860

F: 617-725-0140

[mass.gov/libraries](http://mass.gov/libraries)

(consumer portal)

[mass.gov/mbic](http://mass.gov/mbic)

(agency site)

Mary Ann Cluggish, Chairman  
Francis R. (Frank) Murphy, Vice Chairman  
Carol B. Caro, Secretary  
George T. Comeau, Esq.  
Mary Kronholm  
Roland A. Ochsenbein  
N. Janeen Resnick  
Gregory J. Shesko  
Alice M. Welch

Massachusetts Board of Library Commissioners

---

Prepared with LSTA funds

Preparation of this report was supported in part by the U.S. Institute of Museum and Library Services. However, the opinions expressed herein do not necessarily reflect the position or policy of that agency, and no official endorsement by that agency should be inferred.



# Massachusetts Libraries

BOARD OF LIBRARY COMMISSIONERS

## ***The FY2014 Municipal Pie...What's Your Library's Share?***

The *FY2014 Municipal Pie* reports the amount spent by each Massachusetts Municipality on public library service, compared to the amount spent to operate the entire municipality, from July 1, 2013 through June 30, 2014.

Data in the Municipal Pie report is compiled by the MBLC solely from data provided on the *Schedule A* report, submitted by Town Accountants and City Auditors to the Division of Local Services at the Massachusetts Department of Revenue. The *Schedule A* is submitted to the Division of Local Services each fall, after the close of the fiscal year. The Division of Local Services compiles and releases municipal financial data approximately 1 year later. Expenditure data for this *FY2014 Municipal Pie* report was received from the Department of Revenue in January, 2016. Please note that in some instances the data in the Municipal Pie report may differ from data reported by libraries to the Board of Library Commissioners on the State Aid to Public Libraries Financial Report Form. One municipality included in this report, New Ashford, did not have a public library during FY '14. Four municipalities, Barre, Gosnold, Hamilton and Worthington did not supply complete financial data to the Department of Revenue as of this writing and their fiscal data is not included in this report.

Based upon the Uniform Municipal Accounting System (UMAS), revenues and expenditures are reported on Schedule A for general, special revenue, capital project, enterprise and trust funds. Expenditures are submitted in great detail, and they are aggregated into a database in the following categories: General Government, Police, Fire, Other Public Safety, Education, Public Works/Highways, Human Services, Culture and Recreation (including public library expenditures), Debt Service, Intergovernmental Assessments, Fixed Costs, and Other Expenditures. The Division of Local Services separates public library expenditures from the Culture and Recreation category for inclusion in this report.

This report includes expenditures from the general fund only. Spending from special revenue, enterprise, capital projects, or trust funds is not reflected in these figures. Variations among communities may occur in the "other" and "public works" categories because many communities account for spending on sewer, water, utilities, and other public works functions in enterprise or special revenue funds, rather than the general fund. Nevertheless, the Department of Revenue considers spending from the general fund to be the fairest way to compare operating expenditures from community to community.

State Aid to Public Libraries payments are not included in the FY2014 municipal expenditures data reported for public libraries. These are local aid funds to be held in a separate account for the library to expend without appropriation by the municipality. State Aid to Public Libraries payments are not a revenue source for the general fund.

In FY2014, of the \$21.35 billion general fund dollars spent by the Commonwealth's municipalities, \$240.4 million was spent on public libraries by Massachusetts municipalities. The pie chart on page 1 shows the percentages of municipal spending from municipal general funds in various categories. Education spending leads, with 45.39% of the pie. Public libraries account for the smallest part of the pie, at 1.13% of total expenditures.

This report includes a breakdown of municipalities by population group. Population figures are from the 2013 Census Bureau population figures.

Dianne Carty, Director  
Mary Rose Quinn, Head of State Programs/Government Liaison  
Ann Downey, Systems Analyst  
Liz Babbitt, State Aid Specialist  
Uechi Ng, Administrative Assistant

Massachusetts Board of Library Commissioners  
98 North Washington Street, Suite 401  
Boston, MA 02114

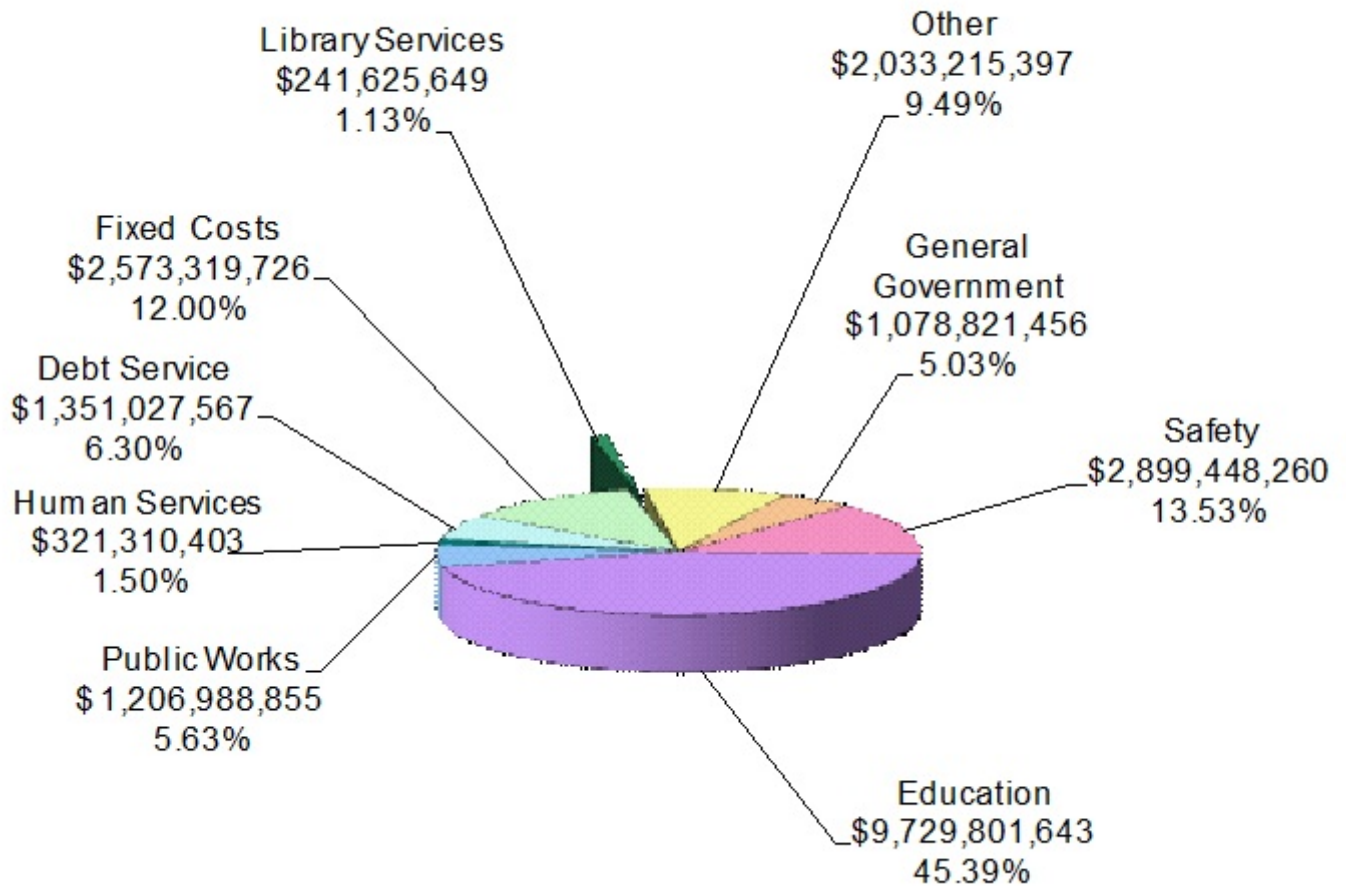
*The FY2014 Municipal Pie...What's Your Library's Share?*  
Created March 2016

# Table of Contents

FY2014 Municipal Pie .....	1
Public Library Share of the FY2014 Massachusetts Municipal Pie: Population Group.....	2
Library Expenditures as Percentage of General Fund FY1991 - FY2014.....	13
Appendix      Expenditure Categories in the Municipal Pie Report	
Kind of Community Classifications	14
Index .....	15

# Public Library Share of the FY2014 Massachusetts Municipal Pie

## FY2014 Massachusetts Municipal Pie



Total Municipal Expenditures: \$ 21,435,758,303  
Total Library Expenditures: \$ 241,625,649

**Public Library Share of the FY2014 Massachusetts Municipal Pie**

Municipality	2013 Population	Kind of Community 1985(KOC)	Total Municipal Expenditures	Total Municipal Per Capita Expenditures	Total Municipal Expenditures for Library Services	Library Percent of Total Expenditures	Library Per Capita Expenditures
<b>Population Group A ( 0 - 1,999 )</b>							
Alford	491	7	1,309,502	2,667.01	3,992	0.30%	8.13
Aquinnah	322	7	3,985,108	12,376.11	127,565	3.20%	396.16
Ashfield	1,733	7	4,100,932	2,366.38	37,000	0.90%	21.35
Becket	1,779	6	5,714,572	3,212.24	43,000	0.75%	24.17
Blandford	1,246	6	3,159,600	2,535.79	49,343	1.56%	39.60
Buckland	1,889	5	4,004,005	2,119.64	50,969	1.27%	26.98
Charlemont	1,251	6	2,794,375	2,233.71	16,728	0.60%	13.37
Chester	1,360	5	2,927,374	2,152.48	31,760	1.08%	23.35
Chesterfield	1,239	6	3,112,857	2,512.39	23,328	0.75%	18.83
Chilmark	913	7	8,957,301	9,810.84	300,478	3.35%	329.11
Clarksburg	1,679	5	3,848,831	2,292.34	54,931	1.43%	32.72
Colrain	1,661	5	3,448,680	2,076.27	47,025	1.36%	28.31
Conway	1,902	7	5,428,470	2,854.09	1,844	0.03%	0.97
Cummington	867	7	2,458,946	2,836.15	7,173	0.29%	8.27
Egremont	1,224	7	3,866,219	3,158.68	28,446	0.74%	23.24
Erving	1,796	5	9,360,619	5,211.93	47,103	0.50%	26.23
Florida	744	6	5,777,336	7,765.24	27,542	0.48%	37.02
Gill	1,491	5	3,060,894	2,052.91	24,134	0.79%	16.19
Goshen	1,058	6	2,492,952	2,356.29	7,843	0.31%	7.41
Granville	1,612	6	3,097,926	1,921.79	34,868	1.13%	21.63
Hancock	717	6	1,543,274	2,152.40	5,837	0.38%	8.14
Hawley	335	7	1,317,003	3,931.35	1,000	0.08%	2.99
Heath	703	6	2,030,096	2,887.76	37,857	1.86%	53.85
Hinsdale	1,994	5	4,334,451	2,173.75	57,639	1.33%	28.91
Leverett	1,861	7	5,763,276	3,096.87	69,557	1.21%	37.38
Leyden	721	6	1,776,411	2,463.82	21,887	1.23%	30.36
Middlefield	528	6	1,383,399	2,620.07	6,740	0.49%	12.77
Monroe	121	5	649,946	5,371.45	1,028	0.16%	8.50
Monterey	957	7	3,757,527	3,926.36	59,490	1.58%	62.16
Montgomery	862	4	1,694,177	1,965.40	19,932	1.18%	23.12
Mount Washington	166	6	955,700	5,757.23	1,422	0.15%	8.57
New Ashford	226	7	591,665	2,617.99	0	0.00%	0.00
New Braintree	1,024	5	2,142,874	2,092.65	17,443	0.81%	17.03
New Marlborough	1,497	7	5,180,024	3,460.27	90,302	1.74%	60.32
New Salem	1,002	6	2,582,412	2,577.26	50,225	1.94%	50.12
Oakham	1,912	6	3,311,735	1,732.08	54,129	1.63%	28.31
Otis	1,595	6	4,717,899	2,957.93	60,885	1.29%	38.17
Pelham	1,319	4	4,646,847	3,523.01	46,795	1.01%	35.48
Peru	842	6	1,974,427	2,344.93	8,058	0.41%	9.57
Petersham	1,244	6	3,660,645	2,942.64	8,900	0.24%	7.15

## Public Library Share of the FY2014 Massachusetts Municipal Pie

Municipality	2013 Population	Kind of Community 1985(KOC)	Total Municipal Expenditures	Total Municipal Per Capita Expenditures	Total Municipal Expenditures for Library Services	Library Percent of Total Expenditures	Library Per Capita Expenditures
Phillipston	1,707	6	3,632,197	2,127.82	20,630	0.57%	12.09
Plainfield	650	6	1,814,951	2,792.23	15,158	0.84%	23.32
Richmond	1,453	4	5,272,716	3,628.85	61,001	1.16%	41.98
Rowe	392	7	3,707,896	9,458.92	62,175	1.68%	158.61
Royalston	1,263	6	1,985,815	1,572.30	51,534	2.60%	40.80
Russell	1,789	5	3,679,836	2,056.92	33,736	0.92%	18.86
Sandisfield	920	7	3,012,133	3,274.06	16,259	0.54%	17.67
Savoy	683	6	2,089,058	3,058.65	400	0.02%	0.59
Shelburne	1,893	5	3,584,273	1,893.44	54,839	1.53%	28.97
Shutesbury	1,773	7	5,847,164	3,297.89	56,990	0.97%	32.14
Stockbridge	1,963	7	8,845,465	4,506.10	135,000	1.53%	68.77
Tolland	489	6	1,554,364	3,178.66	15,423	0.99%	31.54
Tyringham	326	7	1,435,119	4,402.21	3,936	0.27%	12.07
Wales	1,875	6	4,037,703	2,153.44	46,687	1.16%	24.90
Warwick	774	6	1,808,241	2,336.23	26,468	1.46%	34.20
Washington	538	6	1,465,697	2,724.34	7,500	0.51%	13.94
Wendell	868	3	2,472,603	2,848.62	38,663	1.56%	44.54
West Stockbridge	1,288	7	4,431,901	3,440.92	30,053	0.68%	23.33
Westhampton	1,603	4	4,791,425	2,989.04	83,500	1.74%	52.09
Whately	1,505	7	4,529,922	3,009.91	49,215	1.09%	32.70
Windsor	903	7	1,887,257	2,089.99	2,300	0.12%	2.55
<b>Totals: Population Group A ( 0 - 1,999 )</b>							
61 municipalities	70,538		208,806,023	2,960.19	2,395,665	1.15%	33.96
				<b>Average</b>		1.01%	38.39
				<b>Median</b>		0.97%	24.17
<b>Population Group B ( 2,000 - 4,999 )</b>							
Ashby	3,161	6	6,322,569	2,000.18	78,521	1.24%	24.84
Avon	4,454	2	21,747,050	4,882.59	361,568	1.66%	81.18
Berlin	2,942	4	10,600,340	3,603.11	129,449	1.22%	44.00
Bernardston	2,123	5	4,492,815	2,116.26	66,544	1.48%	31.34
Boylston	4,431	4	13,397,006	3,023.47	161,870	1.21%	36.53
Brimfield	3,708	6	8,712,556	2,349.66	90,482	1.04%	24.40
Brookfield	3,381	5	7,322,611	2,165.81	107,478	1.47%	31.79
Cheshire	3,192	5	4,858,135	1,521.97	21,707	0.45%	6.80
Dunstable	3,346	4	8,057,723	2,408.17	148,556	1.84%	44.40
East Brookfield	2,183	5	4,460,692	2,043.38	74,818	1.68%	34.27
Eastham	4,932	7	23,102,734	4,684.25	283,648	1.23%	57.51
Edgartown	4,278	7	31,411,864	7,342.65	525,221	1.67%	122.77
Essex	3,606	7	13,103,266	3,633.74	107,662	0.82%	29.86

## Public Library Share of the FY2014 Massachusetts Municipal Pie

Municipality	2013 Population	Kind of Community 1985(KOC)	Total Municipal Expenditures	Total Municipal Per Capita Expenditures	Total Municipal Expenditures for Library Services	Library Percent of Total Expenditures	Library Per Capita Expenditures
Hardwick	2,997	5	4,535,723	1,513.42	70,110	1.55%	23.39
Hatfield	3,282	5	8,610,532	2,623.56	102,997	1.20%	31.38
Holland	2,495	6	6,268,373	2,512.37	33,172	0.53%	13.30
Hubbardston	4,464	6	7,362,946	1,649.41	64,953	0.88%	14.55
Huntington	2,168	6	4,155,223	1,916.62	62,912	1.51%	29.02
Lanesborough	3,037	6	9,985,168	3,287.84	33,346	0.33%	10.98
Lenox	4,983	3	20,796,721	4,173.53	248,340	1.19%	49.84
Marion	4,919	3	19,372,203	3,938.24	147,491	0.76%	29.98
Millville	3,210	5	5,223,628	1,627.30	16,506	0.32%	5.14
Nahant	3,446	7	10,171,548	2,951.70	189,840	1.87%	55.09
North Brookfield	4,755	5	12,082,673	2,541.05	96,714	0.80%	20.34
Northfield	3,023	5	7,278,692	2,407.77	148,423	2.04%	49.10
Oak Bluffs	4,685	7	25,213,022	5,381.65	463,526	1.84%	98.94
Paxton	4,854	4	11,291,486	2,326.22	151,053	1.34%	31.12
Plympton	2,859	3	10,119,246	3,539.44	126,010	1.25%	44.07
Princeton	3,436	4	8,773,435	2,553.39	153,539	1.75%	44.69
Provincetown	2,966	1	24,159,886	8,145.61	311,213	1.29%	104.93
Sheffield	3,225	7	9,285,284	2,879.16	151,331	1.63%	46.92
Sherborn	4,239	4	24,534,478	5,787.80	397,803	1.62%	93.84
Sunderland	3,690	3	9,278,822	2,514.59	117,691	1.27%	31.89
Tisbury	4,108	7	22,385,973	5,449.36	517,873	2.31%	126.06
Truro	2,011	7	15,616,810	7,765.69	305,868	1.96%	152.10
Wellfleet	2,733	7	17,632,003	6,451.52	378,227	2.15%	138.39
West Brookfield	3,759	5	6,435,288	1,711.97	182,590	2.84%	48.57
West Newbury	4,437	6	13,716,070	3,091.29	301,863	2.20%	68.03
West Tisbury	2,874	7	15,328,125	5,333.38	447,659	2.92%	155.76
Williamsburg	2,466	5	6,268,636	2,542.03	135,032	2.15%	54.76
Adams	8,332	5	13,557,368	1,627.14	248,303	1.83%	29.80
Ashburnham	6,155	6	13,889,393	2,256.60	192,729	1.39%	31.31
Ayer	7,821	1	22,462,716	2,872.10	471,978	2.10%	60.35
Berkley	6,516	6	17,544,341	2,692.50	115,520	0.66%	17.73
Blackstone	9,079	5	19,840,497	2,185.32	339,057	1.71%	37.35
<b>Totals: Population Group B ( 2,000 - 4,999 )</b>							
40 municipalities	140,858		493,471,355	3,503.33	7,513,606	1.52%	53.34
				<b>Average</b>		1.46%	53.55
				<b>Median</b>		1.48%	44.04
<b>Population Group C ( 5,000 - 9,999 )</b>							
Bolton	5,075	4	20,958,879	4,129.83	367,485	1.75%	72.41
Boxborough	5,137	4	19,626,705	3,820.66	327,308	1.67%	63.72



## Public Library Share of the FY2014 Massachusetts Municipal Pie

Municipality	2013 Population	Kind of Community 1985(KOC)	Total Municipal Expenditures	Total Municipal Per Capita Expenditures	Total Municipal Expenditures for Library Services	Library Percent of Total Expenditures	Library Per Capita Expenditures
Boxford	8,163	4	28,367,326	3,475.11	410,900	1.45%	50.34
Brewster	9,754	7	39,797,298	4,080.10	555,350	1.40%	56.94
Carlisle	5,028	4	25,606,830	5,092.85	560,870	2.19%	111.55
Chatham	6,131	7	37,447,266	6,107.86	436,442	1.17%	71.19
Cohasset	8,273	4	40,303,886	4,871.74	530,276	1.32%	64.10
Dalton	6,725	5	14,198,331	2,111.28	181,695	1.28%	27.02
Deerfield	5,089	5	12,936,709	2,542.09	152,011	1.18%	29.87
Dighton	7,214	5	16,491,300	2,286.01	228,729	1.39%	31.71
Douglas	8,624	6	24,979,075	2,896.46	205,289	0.82%	23.80
Dover	5,797	4	31,622,259	5,454.94	538,487	1.70%	92.89
Freetown	9,035	3	21,423,801	2,371.20	113,388	0.53%	12.55
Georgetown	8,468	4	25,137,846	2,968.57	306,117	1.22%	36.15
Granby	6,290	3	17,551,340	2,790.36	133,319	0.76%	21.20
Great Barrington	6,996	1	21,958,772	3,138.76	442,519	2.02%	63.25
Groveland	7,019	4	13,251,565	1,887.96	214,365	1.62%	30.54
Hadley	5,271	7	14,427,917	2,737.23	203,974	1.41%	38.70
Halifax	7,606	6	19,401,975	2,550.88	295,133	1.52%	38.80
Hampden	5,179	4	11,215,272	2,165.53	113,685	1.01%	21.95
Harvard	6,569	3	22,996,425	3,500.75	545,457	2.37%	83.04
Hopedale	5,954	5	21,098,941	3,543.66	252,628	1.20%	42.43
Lancaster	8,054	3	17,215,496	2,137.51	303,375	1.76%	37.67
Lee	5,921	5	25,018,507	4,225.39	260,605	1.04%	44.01
Lincoln	6,565	4	30,692,375	4,675.15	924,587	3.01%	140.84
Littleton	9,246	2	37,500,662	4,055.88	481,604	1.28%	52.09
Manchester-by-the-Sea	5,249	4	25,074,755	4,777.05	415,935	1.66%	79.24
Mattapoisett	6,172	3	23,078,400	3,739.21	332,593	1.44%	53.89
Mendon	5,904	4	15,700,357	2,659.27	158,177	1.01%	26.79
Merrimac	6,612	5	15,435,673	2,334.49	252,910	1.64%	38.25
Middleton	9,419	2	28,709,206	3,048.01	455,187	1.59%	48.33
Millis	8,047	4	25,093,338	3,118.35	335,802	1.34%	41.73
Monson	8,722	5	22,779,683	2,611.75	225,425	0.99%	25.85
Montague	8,377	5	17,314,006	2,066.85	331,629	1.92%	39.59
Newbury	6,853	6	17,393,062	2,538.02	222,606	1.28%	32.48
Orange	7,756	5	18,080,167	2,331.12	297,433	1.65%	38.35
Orleans	5,868	7	29,687,084	5,059.15	506,370	1.71%	86.29
Plainville	8,825	3	25,601,722	2,901.04	186,953	0.73%	21.18
Rochester	5,381	3	19,461,066	3,616.63	186,431	0.96%	34.65
Rockport	7,131	7	25,960,968	3,640.58	504,750	1.94%	70.78
Rowley	6,031	3	14,236,159	2,360.50	258,092	1.81%	42.79
Rutland	8,256	6	16,957,338	2,053.94	199,609	1.18%	24.18
Salisbury	8,580	3	20,295,687	2,365.46	191,807	0.95%	22.36

**Public Library Share of the FY2014 Massachusetts Municipal Pie**

Municipality	2013 Population	Kind of Community 1985(KOC)	Total Municipal Expenditures	Total Municipal Per Capita Expenditures	Total Municipal Expenditures for Library Services	Library Percent of Total Expenditures	Library Per Capita Expenditures
Shirley	7,613	5	11,720,056	1,539.48	208,743	1.78%	27.42
Southampton	5,984	6	11,208,306	1,873.05	128,141	1.14%	21.41
Southborough	9,896	4	44,668,564	4,513.80	394,843	0.88%	39.90
Southwick	9,634	3	19,321,848	2,005.59	365,720	1.89%	37.96
Sterling	7,894	4	20,907,195	2,648.49	354,852	1.70%	44.95
Stow	6,916	4	24,533,441	3,547.35	211,676	0.86%	30.61
Sturbridge	9,407	3	28,294,244	3,007.79	376,529	1.33%	40.03
Sutton	9,133	6	28,504,705	3,121.07	182,652	0.64%	20.00
Templeton	8,134	5	12,440,303	1,529.42	45,223	0.36%	5.56
Topsfield	6,388	4	21,904,136	3,428.95	508,683	2.32%	79.63
Townsend	9,194	6	18,468,308	2,008.73	224,305	1.21%	24.40
Upton	7,668	7	19,249,323	2,510.34	209,698	1.09%	27.35
Ware	9,844	5	27,435,243	2,787.00	187,338	0.68%	19.03
Warren	5,168	5	7,822,666	1,513.67	156,712	2.00%	30.32
Wenham	5,055	4	13,828,663	2,735.64	759,765	5.49%	150.30
West Boylston	7,901	2	21,931,152	2,775.74	345,744	1.58%	43.76
West Bridgewater	6,983	5	24,370,550	3,489.98	392,000	1.61%	56.14
Westminster	7,404	3	18,955,432	2,560.16	333,174	1.76%	45.00
Williamstown	7,599	7	18,243,675	2,400.80	429,667	2.36%	56.54
<b>Totals: Population Group C ( 5,000 - 9,999 )</b>							
67 municipalities	488,084		1,453,187,554	2,977.33	21,330,359	1.47%	43.70
				<b>Average</b>		1.50%	45.71
				<b>Median</b>		1.41%	38.70
<b>Population Group D ( 10,000 - 14,999 )</b>							
Acushnet	10,350	5	23,671,528	2,287.10	195,950	0.83%	18.93
Athol	11,619	5	16,582,609	1,427.20	454,885	2.74%	39.15
Bedford	13,975	2	76,162,796	5,449.93	1,171,484	1.54%	83.83
Belchertown	14,735	3	45,165,276	3,065.17	389,060	0.86%	26.40
Carver	11,494	3	33,947,969	2,953.54	370,433	1.09%	32.23
Charlton	13,175	6	23,671,460	1,796.70	351,766	1.49%	26.70
Clinton	13,697	1	36,773,622	2,684.79	326,769	0.89%	23.86
Dennis	14,067	7	52,785,979	3,752.47	483,483	0.92%	34.37
Dudley	11,516	5	13,342,012	1,158.56	177,174	1.33%	15.39
East Bridgewater	14,090	3	41,780,521	2,965.26	436,380	1.04%	30.97
Groton	11,115	4	32,051,967	2,883.67	796,967	2.49%	71.70
Hanover	14,280	4	52,026,723	3,643.33	498,816	0.96%	34.93
Hanson	10,324	3	20,270,643	1,963.45	333,278	1.64%	32.28
Harwich	12,202	3	53,637,881	4,395.83	719,837	1.34%	58.99
Holbrook	10,952	2	31,262,702	2,854.52	319,487	1.02%	29.17

## Public Library Share of the FY2014 Massachusetts Municipal Pie

Municipality	2013 Population	Kind of Community 1985(KOC)	Total Municipal Expenditures	Total Municipal Per Capita Expenditures	Total Municipal Expenditures for Library Services	Library Percent of Total Expenditures	Library Per Capita Expenditures
Holliston	14,162	4	54,756,068	3,866.41	436,946	0.80%	30.85
Hull	10,332	5	35,196,953	3,406.60	295,573	0.84%	28.61
Ipswich	13,574	7	42,524,184	3,132.77	592,567	1.39%	43.65
Kingston	12,819	3	39,312,609	3,066.75	556,722	1.42%	43.43
Lakeville	11,144	6	22,625,282	2,030.27	292,833	1.29%	26.28
Leicester	11,243	5	26,659,608	2,371.22	156,988	0.59%	13.96
Lunenburg	10,969	3	30,955,804	2,822.12	359,521	1.16%	32.78
Lynnfield	12,395	4	45,518,874	3,672.36	717,294	1.58%	57.87
Mashpee	14,068	3	53,149,531	3,778.04	477,379	0.90%	33.93
Maynard	10,370	1	36,835,207	3,552.09	450,248	1.22%	43.42
Medfield	12,313	4	51,534,391	4,185.36	649,495	1.26%	52.75
Medway	13,053	4	42,941,326	3,289.77	244,943	0.57%	18.77
Millbury	13,399	5	36,682,801	2,737.73	298,826	0.81%	22.30
Nantucket	10,399	7	74,839,732	7,196.82	676,444	0.90%	65.05
Norfolk	11,689	4	33,514,996	2,867.23	498,567	1.49%	42.65
North Adams	13,533	1	38,436,437	2,840.20	278,057	0.72%	20.55
Northborough	14,762	2	50,874,571	3,446.32	694,573	1.37%	47.05
Norwell	10,723	4	46,389,277	4,326.15	572,517	1.23%	53.39
Oxford	13,806	5	35,222,366	2,551.24	428,171	1.22%	31.01
Palmer	12,157	5	29,869,635	2,456.99	703,321	2.35%	57.85
Pepperell	11,876	6	20,605,152	1,735.02	444,535	2.16%	37.43
Raynham	13,554	3	35,675,032	2,632.07	326,045	0.91%	24.06
Rehoboth	11,837	6	22,159,719	1,872.07	212,341	0.96%	17.94
Seekonk	14,366	3	44,095,122	3,069.41	824,762	1.87%	57.41
Spencer	11,766	5	16,900,829	1,436.41	374,672	2.22%	31.84
Swampscott	13,951	2	53,884,078	3,862.38	661,616	1.23%	47.42
Tyngsborough	12,054	3	33,700,527	2,795.80	317,074	0.94%	26.30
Uxbridge	13,647	5	39,201,824	2,872.56	307,876	0.79%	22.56
Wayland	13,444	4	66,501,936	4,946.59	985,304	1.48%	73.29
Weston	11,853	4	95,100,156	8,023.30	1,194,263	1.26%	100.76
Westwood	14,876	2	70,332,233	4,727.90	1,074,615	1.53%	72.24
Whitman	14,696	5	27,415,779	1,865.53	358,736	1.31%	24.41
Wilbraham	14,477	4	35,754,636	2,469.75	644,849	1.80%	44.54
Winchendon	10,542	5	26,444,587	2,508.50	164,601	0.62%	15.61
Wrentham	11,268	5	35,015,292	3,107.50	272,957	0.78%	24.22
<b>Totals: Population Group D ( 10,000 - 14,999 )</b>							
50 municipalities	628,708		2,003,760,242	3,187.11	24,571,000	1.23%	39.08
<b>Average</b>						1.26%	38.90
<b>Median</b>						1.23%	32.53

**Public Library Share of the FY2014 Massachusetts Municipal Pie**

Municipality	2013 Population	Kind of Community 1985(KOC)	Total Municipal Expenditures	Total Municipal Per Capita Expenditures	Total Municipal Expenditures for Library Services	Library Percent of Total Expenditures	Library Per Capita Expenditures
<b>Population Group E ( 15,000 - 24,999 )</b>							
Abington	16,124	5	41,965,576	2,602.68	452,486	1.08%	28.06
Acton	22,891	2	85,004,783	3,713.46	1,295,716	1.52%	56.60
Amesbury	16,650	5	51,544,750	3,095.78	674,891	1.31%	40.53
Ashland	17,150	2	52,265,228	3,047.54	303,746	0.58%	17.71
Auburn	16,315	2	45,579,222	2,793.70	569,459	1.25%	34.90
Bellingham	16,675	3	51,162,530	3,068.22	488,526	0.95%	29.30
Bourne	19,733	3	58,576,649	2,968.46	601,204	1.03%	30.47
Canton	22,221	2	78,675,263	3,540.58	1,085,902	1.38%	48.87
Concord	19,285	2	86,205,903	4,470.10	1,834,719	2.13%	95.14
Duxbury	15,288	4	68,001,856	4,448.05	1,236,831	1.82%	80.90
East Longmeadow	16,022	2	53,758,546	3,355.30	662,799	1.23%	41.37
Easthampton	15,971	5	36,886,931	2,309.62	198,244	0.54%	12.41
Easton	23,753	4	68,193,479	2,870.94	465,370	0.68%	19.59
Fairhaven	16,065	1	43,141,633	2,685.44	599,172	1.39%	37.30
Foxborough	17,257	2	60,972,522	3,533.21	961,169	1.58%	55.70
Gardner	20,354	1	42,596,032	2,092.76	620,734	1.46%	30.50
Grafton	18,155	2	49,581,579	2,731.02	552,860	1.12%	30.45
Greenfield	17,492	1	48,427,755	2,768.57	623,810	1.29%	35.66
Hingham	22,740	4	84,695,036	3,724.50	1,466,548	1.73%	64.49
Holden	17,995	4	42,080,092	2,338.43	778,266	1.85%	43.25
Hopkinton	15,918	4	62,562,711	3,930.31	357,565	0.57%	22.46
Hudson	19,586	2	71,882,129	3,670.08	696,641	0.97%	35.57
Longmeadow	15,882	4	54,762,690	3,448.10	625,977	1.14%	39.41
Ludlow	21,451	3	55,584,688	2,591.24	442,898	0.80%	20.65
Mansfield	23,566	3	80,944,790	3,434.81	641,266	0.79%	27.21
Marblehead	20,187	2	67,919,355	3,364.51	1,027,501	1.51%	50.90
Middleborough	23,601	5	66,890,604	2,834.23	564,269	0.84%	23.91
Newburyport	17,800	5	58,536,661	3,288.58	1,243,150	2.12%	69.84
North Reading	15,377	4	56,698,044	3,687.20	482,166	0.85%	31.36
Northbridge	16,103	5	39,649,349	2,462.23	143,217	0.36%	8.89
Norton	19,367	3	50,672,085	2,616.41	345,000	0.68%	17.81
Pembroke	18,097	3	52,635,723	2,908.53	592,482	1.13%	32.74
Rockland	17,632	5	48,283,588	2,738.41	503,733	1.04%	28.57
Sandwich	20,589	4	69,153,228	3,358.75	939,639	1.36%	45.64
Scituate	18,297	4	64,211,774	3,509.42	903,716	1.41%	49.39
Sharon	18,027	4	71,966,392	3,992.14	886,197	1.23%	49.16
Somerset	18,290	2	50,519,772	2,762.15	521,084	1.03%	28.49
South Hadley	17,740	2	38,953,105	2,195.78	554,394	1.42%	31.25
Southbridge	16,793	1	48,545,440	2,890.81	480,762	0.99%	28.63
Stoneham	21,734	2	59,352,163	2,730.84	728,604	1.23%	33.52

**Public Library Share of the FY2014 Massachusetts Municipal Pie**

Municipality	2013 Population	Kind of Community 1985(KOC)	Total Municipal Expenditures	Total Municipal Per Capita Expenditures	Total Municipal Expenditures for Library Services	Library Percent of Total Expenditures	Library Per Capita Expenditures
Sudbury	18,367	4	82,459,186	4,489.53	1,062,526	1.29%	57.85
Swansea	16,079	3	37,140,332	2,309.87	266,160	0.72%	16.55
Walpole	24,818	2	76,139,438	3,067.91	779,968	1.02%	31.43
Wareham	22,384	3	54,728,319	2,444.97	301,263	0.55%	13.46
Webster	16,811	1	36,002,728	2,141.62	306,162	0.85%	18.21
Westborough	18,630	2	116,439,532	6,250.11	954,015	0.82%	51.21
Westford	23,265	4	93,080,619	4,000.89	1,438,044	1.54%	61.81
Westport	15,700	3	32,909,653	2,096.16	219,060	0.67%	13.95
Wilmington	23,147	2	90,019,172	3,889.02	1,006,731	1.12%	43.49
Winchester	22,079	2	95,043,199	4,304.69	1,658,807	1.75%	75.13
Winthrop	18,111	5	40,365,579	2,228.79	466,667	1.16%	25.77
Yarmouth	23,651	3	66,389,529	2,807.05	667,498	1.01%	28.22
<b>Totals: Population Group E ( 15,000 - 24,999 )</b>							
52 municipalities	987,215		3,139,756,942	3,180.42	37,279,614	1.19%	37.76
				<b>Average</b>		1.15%	37.42
				<b>Median</b>		1.13%	32.09
<b>Population Group F ( 25,000 - 49,999 )</b>							
Agawam	28,705	3	78,482,657	2,734.11	1,030,952	1.31%	35.92
Amherst	38,919	3	68,825,339	1,768.43	1,741,512	2.53%	44.75
Andover	34,477	2	146,737,261	4,256.09	2,523,588	1.72%	73.20
Arlington	44,028	2	132,047,079	2,999.16	2,072,911	1.57%	47.08
Attleboro	43,886	1	120,329,647	2,741.87	1,025,451	0.85%	23.37
Barnstable	44,641	3	134,859,063	3,020.97	1,630,979	1.21%	36.54
Belmont	25,332	2	89,331,617	3,526.43	1,773,548	1.99%	70.01
Beverly	40,664	2	108,764,771	2,674.72	1,791,707	1.65%	44.06
Billerica	41,888	2	135,605,289	3,237.33	1,388,041	1.02%	33.14
Braintree	36,727	2	112,950,356	3,075.40	1,118,062	0.99%	30.44
Bridgewater	26,506	3	49,334,419	1,861.25	519,600	1.05%	19.60
Burlington	25,463	2	114,909,080	4,512.79	1,374,289	1.20%	53.97
Chelmsford	34,722	2	109,861,802	3,164.04	1,719,564	1.57%	49.52
Chelsea	37,670	1	129,832,121	3,446.57	285,008	0.22%	7.57
Danvers	27,483	2	86,769,152	3,157.19	1,220,062	1.41%	44.39
Dartmouth	34,557	3	75,996,662	2,199.17	1,054,125	1.39%	30.50
Dedham	25,299	2	88,704,566	3,506.25	1,037,865	1.17%	41.02
Dracut	30,687	3	69,163,312	2,253.83	685,605	0.99%	22.34
Everett	42,935	1	143,331,954	3,338.35	847,668	0.59%	19.74
Falmouth	31,644	3	115,255,428	3,642.25	1,741,333	1.51%	55.03
Fitchburg	40,383	1	110,661,000	2,740.29	652,968	0.59%	16.17
Franklin	32,581	2	104,161,395	3,197.00	622,168	0.60%	19.10

## Public Library Share of the FY2014 Massachusetts Municipal Pie

Municipality	2013 Population	Kind of Community 1985(KOC)	Total Municipal Expenditures	Total Municipal Per Capita Expenditures	Total Municipal Expenditures for Library Services	Library Percent of Total Expenditures	Library Per Capita Expenditures
Gloucester	29,393	1	95,788,198	3,258.88	823,058	0.86%	28.00
Holyoke	40,249	1	143,586,805	3,567.46	639,126	0.45%	15.88
Leominster	41,002	1	117,533,363	2,866.53	1,330,287	1.13%	32.44
Lexington	32,650	2	174,285,592	5,338.00	2,146,323	1.23%	65.74
Marlborough	39,414	2	126,670,373	3,213.84	859,622	0.68%	21.81
Marshfield	25,509	4	80,633,747	3,160.99	633,616	0.79%	24.84
Melrose	27,690	2	75,696,123	2,733.70	925,849	1.22%	33.44
Methuen	48,514	1	135,982,584	2,802.96	1,091,089	0.80%	22.49
Milford	28,288	1	85,367,931	3,017.81	1,167,256	1.37%	41.26
Milton	27,270	2	84,940,279	3,114.79	1,144,148	1.35%	41.96
Natick	35,214	2	125,107,977	3,552.79	2,082,449	1.66%	59.14
Needham	29,736	2	131,221,408	4,412.88	1,416,017	1.08%	47.62
North Andover	29,217	2	77,170,123	2,641.27	861,156	1.12%	29.47
North Attleborough	28,801	5	78,130,018	2,712.75	555,629	0.71%	19.29
Northampton	28,495	1	84,407,887	2,962.20	1,407,202	1.67%	49.38
Norwood	28,951	2	120,760,738	4,171.21	1,521,463	1.26%	52.55
Pittsfield	44,057	1	130,732,076	2,967.34	890,552	0.68%	20.21
Randolph	33,456	2	83,648,784	2,500.26	870,056	1.04%	26.01
Reading	25,327	2	78,037,586	3,081.20	1,329,932	1.70%	52.51
Salem	42,544	1	128,879,755	3,029.33	1,174,986	0.91%	27.62
Saugus	27,735	2	71,332,435	2,571.93	488,370	0.68%	17.61
Shrewsbury	36,309	2	100,425,757	2,765.86	1,086,847	1.08%	29.93
Stoughton	28,106	2	80,131,124	2,851.03	928,422	1.16%	33.03
Tewksbury	30,107	2	93,156,560	3,094.18	939,394	1.01%	31.20
Wakefield	26,080	2	73,157,066	2,805.10	1,380,043	1.89%	52.92
Watertown	32,996	1	105,368,631	3,193.38	2,325,940	2.21%	70.49
Wellesley	29,090	2	132,529,827	4,555.86	2,063,816	1.56%	70.95
West Springfield	28,684	1	87,759,875	3,059.54	810,215	0.92%	28.25
Westfield	41,301	1	102,910,241	2,491.71	839,616	0.82%	20.33
Woburn	39,083	2	124,570,128	3,187.32	1,070,173	0.86%	27.38
<b>Totals: Population Group F ( 25,000 - 49,999 )</b>							
52 municipalities	1,754,465		5,455,836,961	3,109.69	62,659,658	1.15%	35.71
				<b>Average</b>		1.17%	36.75
				<b>Median</b>		1.13%	32.74

**Public Library Share of the FY2014 Massachusetts Municipal Pie**

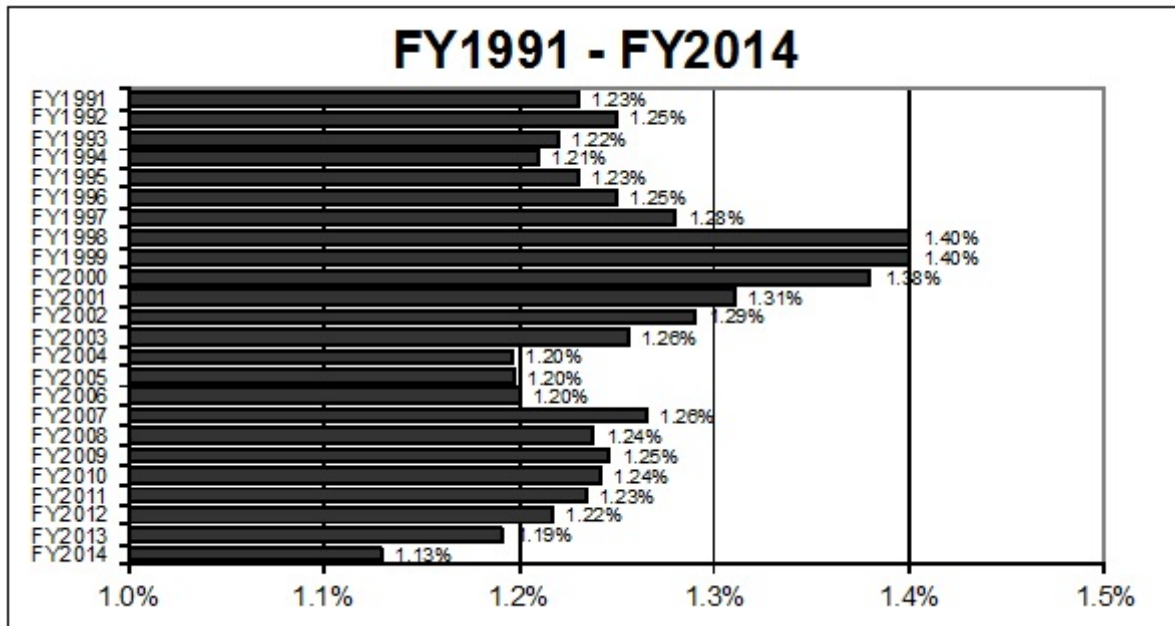
Municipality	2013 Population	Kind of Community 1985(KOC)	Total Municipal Expenditures	Total Municipal Per Capita Expenditures	Total Municipal Expenditures for Library Services	Library Percent of Total Expenditures	Library Per Capita Expenditures
<b>Population Group G ( 50,000 - 99,999 )</b>							
Brockton	94,089	1	281,147,787	2,988.10	1,993,794	0.71%	21.19
Brookline	59,128	2	223,977,105	3,788.00	3,781,744	1.69%	63.96
Chicopee	55,717	1	156,386,632	2,806.80	1,475,416	0.94%	26.48
Fall River	88,697	1	238,512,784	2,689.07	1,142,884	0.48%	12.89
Framingham	70,441	2	197,834,158	2,808.51	2,816,027	1.42%	39.98
Haverhill	62,088	1	137,159,094	2,209.11	1,102,217	0.80%	17.75
Lawrence	77,657	1	257,773,041	3,319.38	938,873	0.36%	12.09
Lynn	91,589	1	232,588,741	2,539.48	989,615	0.43%	10.80
Malden	60,509	1	158,104,726	2,612.91	1,349,616	0.85%	22.30
Medford	57,170	1	131,254,017	2,295.85	1,073,621	0.82%	18.78
New Bedford	95,078	1	274,187,235	2,883.81	2,016,735	0.74%	21.21
Newton	87,971	2	336,617,258	3,826.46	4,521,195	1.34%	51.39
Peabody	52,044	2	149,812,943	2,878.58	1,705,869	1.14%	32.78
Plymouth	57,826	3	179,510,953	3,104.33	1,565,488	0.87%	27.07
Quincy	93,494	1	265,081,645	2,835.28	2,796,551	1.05%	29.91
Revere	53,756	1	131,356,060	2,443.56	470,479	0.36%	8.75
Somerville	78,804	1	191,925,075	2,435.47	1,847,135	0.96%	23.44
Taunton	56,069	1	166,021,333	2,961.02	1,088,092	0.66%	19.41
Waltham	62,227	1	196,797,340	3,162.57	2,255,523	1.15%	36.25
Weymouth	55,419	2	141,371,990	2,550.97	1,235,806	0.87%	22.30
<b>Totals: Population Group G ( 50,000 - 99,999 )</b>							
20 municipalities	1,409,773		4,047,419,917	2,870.97	36,166,680	0.89%	25.65
				<b>Average</b>		0.88%	25.94
				<b>Median</b>		0.86%	22.30

**Public Library Share of the FY2014 Massachusetts Municipal Pie**

Municipality	2013 Population	Kind of Community 1985(KOC)	Total Municipal Expenditures	Total Municipal Per Capita Expenditures	Total Municipal Expenditures for Library Services	Library Percent of Total Expenditures	Library Per Capita Expenditures
<b>Population Group H ( 100,000 + )</b>							
Boston	645,966	1	2,754,976,508	4,264.89	31,386,696	1.14%	48.59
Cambridge	107,289	1	434,468,822	4,049.52	7,064,381	1.63%	65.84
Lowell	108,861	1	305,670,893	2,807.90	1,074,459	0.35%	9.87
Springfield	153,703	1	569,726,330	3,706.67	5,390,640	0.95%	35.07
Worcester	182,544	1	568,676,756	3,115.29	4,792,891	0.84%	26.26
<b>Totals: Population Group H ( 100,000 + )</b>							
5 municipalities	1,198,363		4,633,519,309	3,866.54	49,709,067	1.07%	41.48
				<b>Average</b>		0.98%	37.13
				<b>Median</b>		0.95%	35.07
<b>State Totals</b>							
347 municipalities	6,678,004		21,435,758,303	3,209.90	241,625,649	1.13%	36.18
				<b>Average</b>		1.23%	40.50
				<b>Median</b>		1.20%	32.14



## Public Library Share of the FY2014 Massachusetts Municipal Pie



### Library Expenditures as Percentage of General Fund

Fiscal Year	Public Libraries	Education	General Government	Safety	Public Works	Human Services	Fixed Costs	Debt Service	Other
FY1991	1.23%	42.24%	5.37%	15.51%	8.34%	3.65%			23.67%
FY1992	1.25%	42.15%	5.13%	15.43%	8.06%	3.53%	13.13%	6.39%	4.92%
FY1993	1.22%	42.37%	5.03%	15.14%	8.51%	3.34%	13.24%	6.25%	4.90%
FY1994	1.21%	44.51%	4.86%	14.76%	8.33%	3.25%	12.53%	5.80%	4.74%
FY1995	1.23%	45.43%	4.86%	15.11%	7.58%	3.33%	11.91%	5.87%	4.68%
FY1996	1.25%	45.88%	4.95%	14.83%	8.04%	3.26%	11.31%	5.88%	4.60%
FY1997	1.28%	47.57%	5.02%	14.83%	7.41%	1.33%	11.20%	5.99%	5.37%
FY1998	1.40%	48.25%	5.09%	14.98%	7.11%	1.77%	10.88%	6.11%	4.41%
FY1999	1.40%	47.79%	4.99%	14.88%	6.88%	1.59%	10.74%	6.88%	5.60%
FY2000	1.38%	47.90%	5.06%	15.24%	6.96%	1.67%	10.95%	6.71%	4.12%
FY2001	1.31%	47.68%	5.11%	14.82%	7.38%	1.65%	11.05%	7.04%	3.95%
FY2002	1.29%	47.89%	5.13%	14.81%	6.54%	1.64%	11.42%	7.50%	3.77%
FY2003	1.26%	47.75%	4.86%	14.38%	6.67%	1.69%	12.58%	7.43%	3.38%
FY2004	1.20%	46.89%	5.16%	13.95%	6.70%	1.54%	13.06%	7.83%	3.66%
FY2005	1.20%	46.43%	4.74%	14.14%	6.59%	1.55%	13.74%	7.54%	4.06%
FY2006	1.20%	46.67%	4.79%	13.92%	6.03%	1.54%	14.69%	7.37%	3.79%
FY2007	1.26%	48.66%	5.04%	14.62%	6.05%	1.61%	11.30%	7.40%	4.06%
FY2008	1.24%	48.48%	5.12%	14.57%	6.21%	1.62%	11.37%	7.33%	4.05%
FY2009	1.25%	48.03%	5.24%	14.63%	6.31%	1.65%	11.49%	7.21%	4.19%
FY2010	1.24%	48.60%	5.10%	14.19%	5.67%	1.65%	11.93%	7.40%	4.22%
FY2011	1.23%	48.14%	5.15%	14.52%	5.40%	1.63%	12.68%	7.11%	4.15%
FY2012	1.22%	48.66%	4.89%	14.23%	4.63%	1.65%	12.88%	7.55%	4.29%
FY2013	1.19%	48.23%	5.13%	14.26%	5.82%	1.62%	12.44%	6.96%	4.34%
FY2014	1.13%	45.39%	5.03%	13.53%	5.63%	1.5%	12.00%	6.30%	9.49%

## Appendix

<b>Expenditure Categories in the Municipal Pie Report</b>	
<i>Report Categories:</i>	<i>Schedule A Expenditure Categories:</i>
Debt Service	Retirement of debt principal, interest on long term debt, interest on short term debt and other interest
Education	Education expenditures
Fixed Costs	Workers' Compensation, unemployment, health insurance, other employee benefits and retirement
General Government	Legislative, executive, accountant/auditor, collector, treasurer, law town/city counsel, public building/properties maintenance, assessors, operation support, license and registration, land uses, conservation commission and other
Human Services	Health services, clinical services, special services, veterans' services and other
Other	Culture and recreation (recreation, parks, historical commission, celebrations and other,) intergovernmental assessments and other (court judgments and other unclassified expenditures.)
Library Services	Library expenditures, less capital and regional library expenditures
Public Works	Highways/streets, snow and ice, waste collection and disposal, sewerage collection and disposal, water distribution, parking garage, street lighting, and other
Safety	Fire, police, emergency medical services, protective inspection such as building and gas and other services such as harbormaster and dog officer.
Expenditure categories in the Municipal Pie Report are based on <u>Schedule A</u> expenditures reported to the Department of Revenue	

<b>Kind of Community Classifications</b>		
"Kind of Community" (KOC) is a classification of communities developed by the Massachusetts Department of Education in 1985.		
1	Urbanized Centers	Manufacturing and commercial centers, densely populated, culturally diverse
2	Economically Developed Suburbs	Suburbs with high levels of economic activity, social complexity, and relatively high income levels
3	Growth Communities	Rapidly expanding communities in transition
4	Residential Suburbs	Affluent communities with low levels of economic activity
5	Rural Economic Centers	Historic manufacturing and commercial communities, moderate levels of economic activity
6	Small Rural Communities	Small towns, sparsely populated, economically undeveloped
7	Resort/Retirement and Artisan	Communities with high property values, relatively low income levels, and enclaves of retirees, artists, vacationers and academicians

**Public Library Share of the FY2014 Massachusetts Municipal Pie**

Municipality	Page	Municipality	Page	Municipality	Page
Abington	8	Chilmark	2	Harwich	6
Acton	8	Clarksburg	2	Hatfield	4
Acushnet	6	Clinton	6	Haverhill	11
Adams	4	Cohasset	5	Hawley	2
Agawam	9	Colrain	2	Heath	2
Alford	2	Concord	8	Hingham	8
Amesbury	8	Conway	2	Hinsdale	2
Amherst	9	Cummington	2	Holbrook	6
Andover	9	Dalton	5	Holden	8
Aquinnah	2	Danvers	9	Holland	4
Arlington	9	Dartmouth	9	Holliston	7
Ashburnham	4	Dedham	9	Holyoke	10
Ashby	3	Deerfield	5	Hopedale	5
Ashfield	2	Dennis	6	Hopkinton	8
Ashland	8	Dighton	5	Hubbardston	4
Athol	6	Douglas	5	Hudson	8
Attleboro	9	Dover	5	Hull	7
Auburn	8	Dracut	9	Huntington	4
Avon	3	Dudley	6	Ipswich	7
Ayer	4	Dunstable	3	Kingston	7
Barnstable	9	Duxbury	8	Lakeville	7
Becket	2	East Bridgewater	6	Lancaster	5
Bedford	6	East Brookfield	3	Lanesborough	4
Belchertown	6	East Longmeadow	8	Lawrence	11
Bellingham	8	Eastham	3	Lee	5
Belmont	9	Easthampton	8	Leicester	7
Berkley	4	Easton	8	Lenox	4
Berlin	3	Edgartown	3	Leominster	10
Bernardston	3	Egremont	2	Leverett	2
Beverly	9	Erving	2	Lexington	10
Billerica	9	Essex	3	Leyden	2
Blackstone	4	Everett	9	Lincoln	5
Blandford	2	Fairhaven	8	Littleton	5
Bolton	4	Fall River	11	Longmeadow	8
Boston	12	Falmouth	9	Lowell	12
Bourne	8	Fitchburg	9	Ludlow	8
Boxborough	4	Florida	2	Lunenburg	7
Boxford	5	Foxborough	8	Lynn	11
Boylston	3	Framingham	11	Lynnfield	7
Braintree	9	Franklin	9	Malden	11
Brewster	5	Freetown	5	Manchester-by-the-Sea	5
Bridgewater	9	Gardner	8	Mansfield	8
Brimfield	3	Georgetown	5	Marblehead	8
Brockton	11	Gill	2	Marion	4
Brookfield	3	Gloucester	10	Marlborough	10
Brookline	11	Goshen	2	Marshfield	10
Buckland	2	Grafton	8	Mashpee	7
Burlington	9	Granby	5	Mattapoissett	5
Cambridge	12	Granville	2	Maynard	7
Canton	8	Great Barrington	5	Medfield	7
Carlisle	5	Greenfield	8	Medford	11
Carver	6	Groton	6	Medway	7
Charlemont	2	Groveland	5	Melrose	10
Charlton	6	Hadley	5	Mendon	5
Chatham	5	Halifax	5	Merrimac	5
Chelmsford	9	Hampden	5	Methuen	10
Chelsea	9	Hancock	2	Middleborough	8
Cheshire	3	Hanover	6	Middlefield	2
Chester	2	Hanson	6	Middleton	5
Chesterfield	2	Hardwick	4	Milford	10
Chicopee	11	Harvard	5	Millbury	7

## Public Library Share of the FY2014 Massachusetts Municipal Pie

Municipality	Page	Municipality	Page	Municipality	Page
Millis	5	Revere	11	Ware	6
Millville	4	Richmond	3	Wareham	9
Milton	10	Rochester	5	Warren	6
Monroe	2	Rockland	8	Warwick	3
Monson	5	Rockport	5	Washington	3
Montague	5	Rowe	3	Watertown	10
Monterey	2	Rowley	5	Wayland	7
Montgomery	2	Royalston	3	Webster	9
Mount Washington	2	Russell	3	Wellesley	10
Nahant	4	Rutland	5	Wellfleet	4
Nantucket	7	Salem	10	Wendell	3
Natick	10	Salisbury	5	Wenham	6
Needham	10	Sandisfield	3	West Boylston	6
New Ashford	2	Sandwich	8	West Bridgewater	6
New Bedford	11	Saugus	10	West Brookfield	4
New Braintree	2	Savoy	3	West Newbury	4
New Marlborough	2	Scituate	8	West Springfield	10
New Salem	2	Seekonk	7	West Stockbridge	3
Newbury	5	Sharon	8	West Tisbury	4
Newburyport	8	Sheffield	4	Westborough	9
Newton	11	Shelburne	3	Westfield	10
Norfolk	7	Sherborn	4	Westford	9
North Adams	7	Shirley	6	Westhampton	3
North Andover	10	Shrewsbury	10	Westminster	6
North Attleborough	10	Shutesbury	3	Weston	7
North Brookfield	4	Somerset	8	Westport	9
North Reading	8	Somerville	11	Westwood	7
Northampton	10	South Hadley	8	Weymouth	11
Northborough	7	Southampton	6	Whately	3
Northbridge	8	Southborough	6	Whitman	7
Northfield	4	Southbridge	8	Wilbraham	7
Norton	8	Southwick	6	Williamsburg	4
Norwell	7	Spencer	7	Williamstown	6
Norwood	10	Springfield	12	Wilmington	9
Oak Bluffs	4	Sterling	6	Winchendon	7
Oakham	2	Stockbridge	3	Winchester	9
Orange	5	Stoneham	8	Windsor	3
Orleans	5	Stoughton	10	Winthrop	9
Otis	2	Stow	6	Woburn	10
Oxford	7	Sturbridge	6	Worcester	12
Palmer	7	Sudbury	9	Wrentham	7
Paxton	4	Sunderland	4	Yarmouth	9
Peabody	11	Sutton	6		
Pelham	2	Swampscott	7		
Pembroke	8	Swansea	9		
Pepperell	7	Taunton	11		
Peru	2	Templeton	6		
Petersham	2	Tewksbury	10		
Phillipston	3	Tisbury	4		
Pittsfield	10	Tolland	3		
Plainfield	3	Topsfield	6		
Plainville	5	Townsend	6		
Plymouth	11	Truro	4		
Plympton	4	Tyngsborough	7		
Princeton	4	Tyringham	3		
Provincetown	4	Upton	6		
Quincy	11	Uxbridge	7		
Randolph	10	Wakefield	10		
Raynham	7	Wales	3		
Reading	10	Walpole	9		
Rehoboth	7	Waltham	11		